

## HE 28 W/880

LUMILUX T5 HE | Tubular fluorescent lamps 16 mm, high efficiency



### Areas of application

- Public buildings
- Offices
- Shops
- Supermarkets and department stores
- Industry

### Product benefits

- Good economy and efficiency
- Up to 20 % more economical than LUMILUX T8
- Up to 50 % smaller volume than comparable T8 lamps
- Natural colors

### Product features

- Luminous efficacy: up to 104 lm/W
- Very good lumen maintenance: 90 % throughout the service lifetime of the lamp
- Long average lifetime: up to 24,000 h (with QUICKTRONIC ECG)
- Good color rendering group: 1B ( $R_a$ : 80...89)
- Dimmable



# Product datasheet

## Technical data

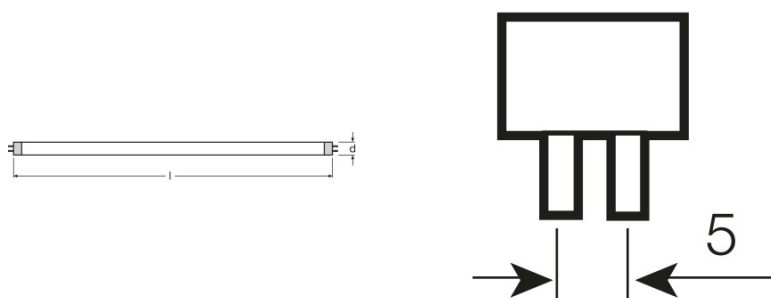
### Electrical data

Nominal wattage	27.90 W
Rated lamp efficacy (HF data 25 °C)	84 lm/W
Rated wattage	27.90 W

### Photometrical data

Color rendering index Ra	≥80
Rated luminous flux	2350 lm
Luminous flux at 25 °C	2350 lm
Luminous flux at 35 °C	2690 lm
Light color	880
Color temperature	8000 K
Nominal luminous flux	2350 lm
Light color as per EN 12464-1	LUMILUX SKYWHITE
Rated LLMF at 2,000 h	0.95
Rated LLMF at 4,000 h	0.92
Rated LLMF at 6,000 h	0.91
Rated LLMF at 8,000 h	0.90
Rated LLMF at 12,000 h	0.90
Rated LLMF at 16,000 h	0.90
Rated LLMF at 20,000 h	0.89

### Dimensions & weight



Tube diameter	16 mm
Length	1149.0 mm
Length with base excl. base pins/connection	1149.00 mm
Diameter	16.0 mm

## Product datasheet

Maximum diameter	16.0 mm
------------------	---------

### Temperatures

Rated ambient temp.w.max.luminous flux	35.0 °C
--	---------

### Lifespan

Service life	19000 h <sup>1)</sup>
Lifespan	24000 h <sup>1)</sup>
Rated lamp survival factor at 2,000 h	0.99
Rated lamp survival factor at 4,000 h	0.99
Rated lamp survival factor at 6,000 h	0.99
Rated lamp survival factor at 8,000 h	0.99
Rated lamp survival factor at 12,000 h	0.99
Rated lamp survival factor at 16,000 h	0.97
Rated lamp survival factor at 20,000 h	0.85
Operation mode LLMF/LSF	HF
Rated lamp life time	24000 h
Nominal lamp life time	24000 h

<sup>1)</sup> With preheat ECG

### Additional product data

Base (standard designation)	G5
Lamp mercury content	1.5 mg
Appropriate disposal acc. to WEEE	Yes
Footnote only for product	Suitable for ECG operation only/Lamp designed for internal luminaire temperatures of 30...40 °C; optimum luminous flux achieved at 35 °C

### Capabilities

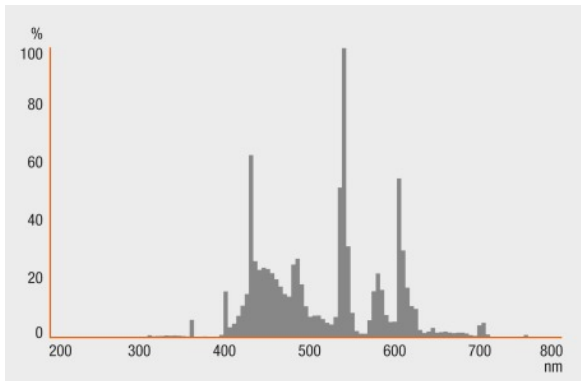
Dimmable	Yes
Suitable for indoor	Yes

### Certificates & standards

Energy efficiency class	A+
Energy consumption	31 kWh/1000h

## Light Distribution

---



Spectral power distribution

---

### System guarantee

OSRAM System+ Guarantee in combination with OSRAM ECGs



Guarantee

---

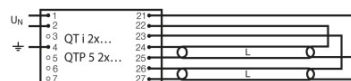
### Safety advice

In case of lamp breakage: [www.osram.com/brokenlamp](http://www.osram.com/brokenlamp)

## Product datasheet



Circuit diagram



Circuit diagram

### Logistical Data

Product code	Product description	Packaging unit (Pieces/Unit)	Dimensions (length x width x height)	Volume	Gross weight
4008321153517	HE 28 W/880	Shipping carton box 20	1182 mm x 83 mm x 104 mm	10.20 dm <sup>3</sup>	2712.50 g

The mentioned product code describes the smallest quantity unit which can be ordered. One shipping unit can contain one or more single products. When placing an order, for the quantity please enter single or multiples of a shipping unit.

### References / Links

For more information on the system guarantee and the terms and conditions of the guarantee visit

- ▶ [www.osram.com/system-guarantee](http://www.osram.com/system-guarantee)

### Disclaimer

Subject to change without notice. Errors and omission excepted. Always make sure to use the most recent release.