

HO 80 W/880

LUMILUX T5 HO | Tubular fluorescent lamps 16 mm, high output



Areas of application

- Industry
- Public buildings
- Offices
- Tunnels, underpasses
- Car parks

Product benefits

- Excellent luminous flux
- Up to 20 % more economical than LUMILUX T8
- Up to 50 % smaller volume than comparable T8 lamps
- Natural colors

Product features

- Very good lumen maintenance: 90 % throughout the service lifetime of the lamp
- Long average lifetime: up to 24,000 h (with QUICKTRONIC ECG)
- Good color rendering group: 1B (R_a : 80...89)
- Dimmable



Product datasheet

Technical data

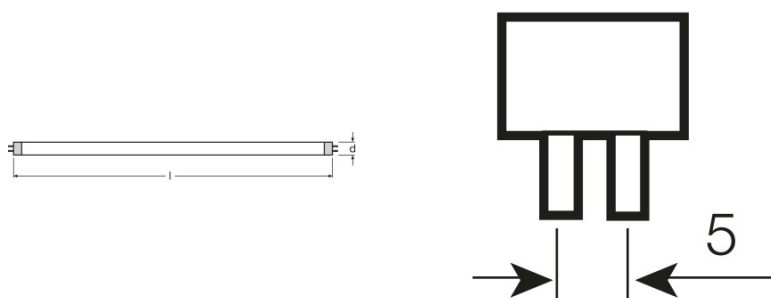
Electrical data

Nominal wattage	79.80 W
Rated lamp efficacy (HF data 25 °C)	70 lm/W
Rated wattage	79.80 W

Photometrical data

Color rendering index Ra	≥80
Rated luminous flux	5550 lm
Luminous flux at 25 °C	5550 lm
Luminous flux at 35 °C	6400 lm
Light color	880
Color temperature	8000 K
Nominal luminous flux	5550 lm
Light color as per EN 12464-1	LUMILUX SKYWHITE
Rated LLMF at 2,000 h	0.95
Rated LLMF at 4,000 h	0.92
Rated LLMF at 6,000 h	0.91
Rated LLMF at 8,000 h	0.90
Rated LLMF at 12,000 h	0.90
Rated LLMF at 16,000 h	0.90
Rated LLMF at 20,000 h	0.89

Dimensions & weight



Tube diameter	16 mm
Length	1449.0 mm
Length with base excl. base pins/connection	1449.00 mm
Diameter	16.0 mm

Product datasheet

Maximum diameter	16.0 mm
------------------	---------

Temperatures

Rated ambient temp.w.max.luminous flux	35.0 °C
----------------------------------------	---------

Lifespan

Service life	19000 h ¹⁾
Lifespan	24000 h ¹⁾
Rated lamp survival factor at 2,000 h	0.99
Rated lamp survival factor at 4,000 h	0.99
Rated lamp survival factor at 6,000 h	0.99
Rated lamp survival factor at 8,000 h	0.99
Rated lamp survival factor at 12,000 h	0.99
Rated lamp survival factor at 16,000 h	0.97
Rated lamp survival factor at 20,000 h	0.85
Operation mode LLMF/LSF	HF
Rated lamp life time	24000 h
Nominal lamp life time	24000 h

¹⁾ With preheat ECG

Additional product data

Base (standard designation)	G5
Lamp mercury content	1.5 mg
Appropriate disposal acc. to WEEE	Yes
Footnote only for product	Suitable for ECG operation only/Lamp designed for internal luminaire temperatures of 30...40 °C; optimum luminous flux achieved at 35 °C

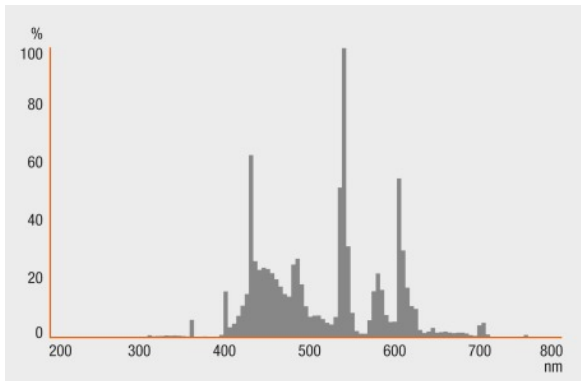
Capabilities

Dimmable	Yes
Suitable for indoor	Yes

Certificates & standards

Energy efficiency class	A
Energy consumption	88 kWh/1000h

Light Distribution



Spectral power distribution

System guarantee

OSRAM System+ Guarantee in combination with OSRAM ECGs

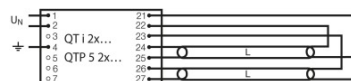


Guarantee

Safety advice

In case of lamp breakage: www.osram.com/brokenlamp

Product datasheet



Circuit diagram

Circuit diagram

Logistical Data

Product code	Product description	Packaging unit (Pieces/Unit)	Dimensions (length x width x height)	Volume	Gross weight
4008321070449	HO 80 W/880	Shipping carton box 20	1482 mm x 83 mm x 104 mm	12.79 dm ³	3450.00 g

The mentioned product code describes the smallest quantity unit which can be ordered. One shipping unit can contain one or more single products. When placing an order, for the quantity please enter single or multiples of a shipping unit.

References / Links

For more information on QUICKTRONIC electronic control gear go to

- ▶ www.osram.com/QUICKTRONIC

Disclaimer

Subject to change without notice. Errors and omission excepted. Always make sure to use the most recent release.

HO 80 W/880

LUMILUX T5 HO | Tubular fluorescent lamps 16 mm, high output

Product name	Product name ECG	EAN	Nominal current	Nominal wattage + Power loss	Luminous flux at 35 °C	Number of lighting outlets
HO 80 W/880	QT 1x80 DIM	4008321640314	0.36 A	82.00 W	6150 lm	1
	QT 2x80 DIM	4008321640413	0.72 A	163.20 W	6150 lm	2
	QT-FQ 2x80	4050300825564	0.76 A	175.00 W	6300 lm	2
	QTi 1x35/49/80 DIM	4050300870540	0.39 A	88.10 W	6150 lm	1
	QTi 1x35/49/80 GII	4008321383372	0.38 A	85.00 W	6150 lm	1
	QTi 2x35/49/80 DIM	4050300870984	0.74 A	165.00 W	6150 lm	2
	QTi 2x35/49/80 GII	4008321658951	0.70 A	167.00 W	6150 lm	2
	QTi DALI 1x35/49/80 DIM	4050300870342	0.39 A	88.10 W	6150 lm	1
	QTi DALI 2x35/49/80 DIM	4050300870441	0.74 A	165.00 W	6150 lm	2
	QTP5 1x80	4008321329059	0.38 A	86.00 W	6150 lm	1

Product name	Product name ECG	EAN	ECG_1.1 Ambient temperature for lifespan	ECG_1.2 Ambient temperature for lifespan	ECG_1.3 Ambient temperature for lifespan
HO 80 W/880	QT 1x80 DIM	4008321640314	40 °C	50 °C	60 °C
	QT 2x80 DIM	4008321640413	40 °C	50 °C	60 °C
	QT-FQ 2x80	4050300825564			
	QTi 1x35/49/80 DIM	4050300870540			
	QTi 1x35/49/80 GII	4008321383372			
	QTi 2x35/49/80 DIM	4050300870984			

Product datasheet

Product name	Product name ECG	EAN	ECG_1.1 Ambient temperature for lifespan	ECG_1.2 Ambient temperature for lifespan	ECG_1.3 Ambient temperature for lifespan
	QTi 2x35/49/80 GII	4008321658951			
	QTi DALI 1x35/49/80 DIM	4050300870342			
	QTi DALI 2x35/49/80 DIM	4050300870441			
	QTP5 1x80	4008321329059	40 °C	50 °C	60 °C

Product name	Product name ECG	EAN	ECG_2.1 Tc point temperature for lifespan	ECG_2.2 Tc point temperature for lifespan	ECG_2.3 Tc point temperature for lifespan
HO 80 W/880	QT 1x80 DIM	4008321640314	55 °C	65 °C	75 °C
	QT 2x80 DIM	4008321640413	60 °C	70 °C	75 °C
	QT-FQ 2x80	4050300825564			
	QTi 1x35/49/80 DIM	4050300870540			
	QTi 1x35/49/80 GII	4008321383372			
	QTi 2x35/49/80 DIM	4050300870984			
	QTi 2x35/49/80 GII	4008321658951			
	QTi DALI 1x35/49/80 DIM	4050300870342			
	QTi DALI 2x35/49/80 DIM	4050300870441			
	QTP5 1x80	4008321329059	55 °C	65 °C	70 °C

Product name	Product name ECG	EAN	ECG_3.1 Temperature dependent lifespan	ECG_3.2 Temperature dependent lifespan	ECG_3.3 Temperature dependent lifespan
HO 80 W/880	QT 1x80 DIM	4008321640314	100000 h	100000 h	90000 h
	QT 2x80 DIM	4008321640413	100000 h	100000 h	80000 h
	QT-FQ 2x80	4050300825564			
	QTi 1x35/49/80 DIM	4050300870540			

Product datasheet

Product name	Product name ECG	EAN	ECG_3.1 Temperature dependent lifespan	ECG_3.2 Temperature dependent lifespan	ECG_3.3 Temperature dependent lifespan
	QTi 1x35/49/80 GII	4008321383372			
	QTi 2x35/49/80 DIM	4050300870984			
	QTi 2x35/49/80 GII	4008321658951			
	QTi DALI 1x35/49/80 DIM	4050300870342			
	QTi DALI 2x35/49/80 DIM	4050300870441			
	QTP5 1x80	4008321329059	100000 h	100000 h	70000 h