

# PRODUCT DATASHEET

## FC 22 W/2700K

LUMILUX T5 FC | Circular fluorescent lamps 16 mm, with 2GX13 base



---

### AREAS OF APPLICATION

- Public buildings
- Offices
- Restaurants
- Industry
- Shops
- Supermarkets and department stores
- Hotels

---

### PRODUCT BENEFITS

- Extremely economical
- Good quality of light
- Excellent luminous flux
- Excellent uniform illumination with no shadows
- Good average life (with OSRAM ECG)

---

### PRODUCT FEATURES

- Good color rendering group: 1B ( $R_a$ : 80...89)
- Dimmable (from 100...1 % with QT<sub>i</sub> DALI/DIM ECG)
- Single-ended round fluorescent lamp
- Tube diameter: 16.0 mm



**TECHNICAL DATA**

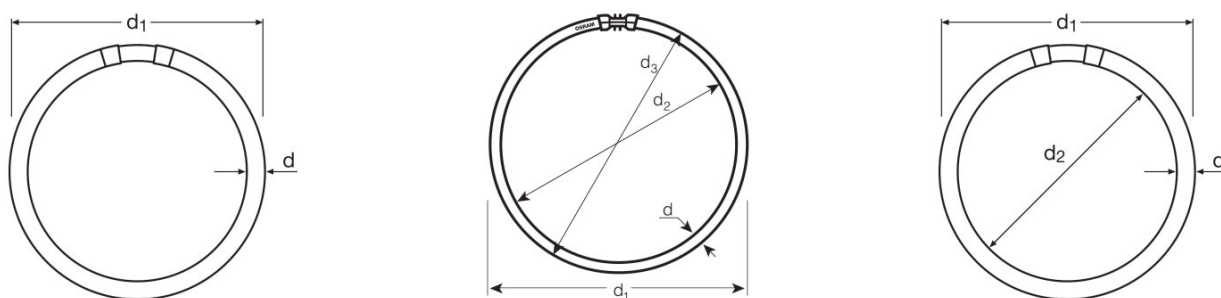
Electrical data

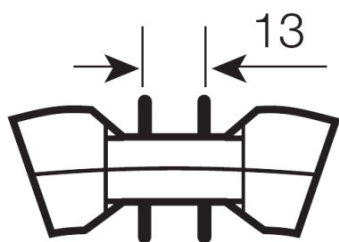
<b>Rated wattage</b>	22.30 W
<b>Nominal wattage</b>	22.00 W

Photometrical data

<b>Rated lamp efficacy (standard condition)</b>	81 lm/W
<b>Color rendering index Ra</b>	≥80
<b>Rated luminous flux</b>	1800 lm
<b>Luminous flux at 25 °C</b>	1900 lm
<b>Light color</b>	827
<b>Rated color temperature</b>	2700 K
<b>Nominal luminous flux</b>	1900 lm
<b>Light color (designation)</b>	LUMILUX INTERNA
<b>Rated LLMF at 2,000 h</b>	0.85
<b>Rated LLMF at 4,000 h</b>	0.83
<b>Rated LLMF at 6,000 h</b>	0.80
<b>Rated LLMF at 8,000 h</b>	0.80
<b>Rated LLMF at 12,000 h</b>	0.75
<b>Color temperature</b>	2700 K
<b>Luminous flux</b>	1900 lm
<b>Color rendering index Ra</b>	≥80

Dimensions & weight





<b>Tube diameter</b>	16 mm
<b>Length</b>	230.0 mm
<b>Length with base excl. base pins/connection</b>	225.00 mm
<b>Diameter</b>	16.0 mm
<b>Maximum diameter</b>	16.0 mm

Temperatures & operating conditions

<b>Rated ambient temp.w.max.luminous flux</b>	35.0 °C
---	---------

Lifespan

<b>Service life</b>	8000 h <sup>1)</sup>
<b>Lifespan</b>	12000 h <sup>1)</sup>
<b>Rated lamp survival factor at 2,000 h</b>	0.99
<b>Rated lamp survival factor at 4,000 h</b>	0.99
<b>Rated lamp survival factor at 6,000 h</b>	0.98
<b>Rated lamp survival factor at 8,000 h</b>	0.92
<b>Rated lamp survival factor at 12,000 h</b>	0.50
<b>Operation mode LLMF/LSF</b>	HF
<b>Rated lamp life time</b>	12000 h
<b>Nominal lamp life time</b>	12000 h

<sup>1)</sup> With preheat ECG

Additional product data

<b>Base (standard designation)</b>	2GX13
<b>Mercury content</b>	3.0 mg
<b>Show WEEE picto</b>	Yes
<b>Product remark</b>	Suitable for ECG operation only

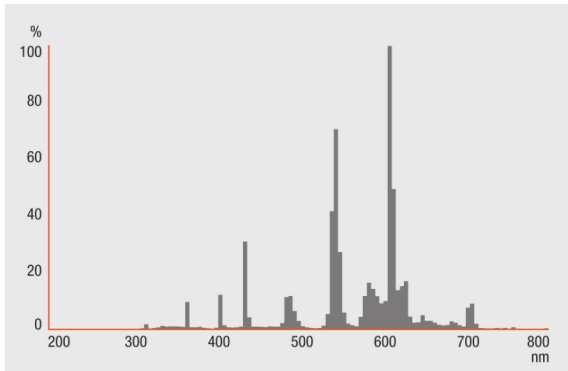
Capabilities

<b>Suitable for indoor</b>	Yes
----------------------------	-----

Certificates & standards

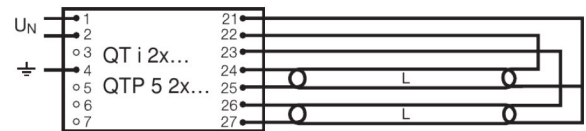
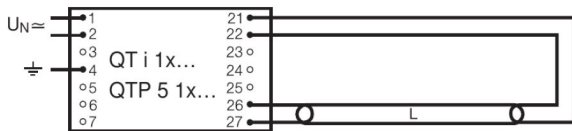
<b>Energy efficiency class</b>	A
<b>Energy consumption</b>	25 kWh/1000h

Light Distribution



Spectral power distribution

Wiring Diagram



Wiring diagram

Wiring diagram

SYSTEM GUARANTEE

- OSRAM System+ Guarantee in combination with OSRAM ECGs

EQUIPMENT / ACCESSORIES

- Exclusively for operation on electronic control gears

SAFETY ADVICE

In case of lamp breakage: [www.ledvance.com/brokenlamp](http://www.ledvance.com/brokenlamp)

LOGISTICAL DATA

Product code	Packaging unit (Pieces/Unit)	Dimensions (length x width x height)	Gross weight	Volume
4050300646237	Folding carton box 1	235 mm x 27 mm x 231 mm	128.50 g	1.47 dm <sup>3</sup>
4050300646244	Shipping carton box 12	375 mm x 245 mm x 253 mm	1865.00 g	23.24 dm <sup>3</sup>

The mentioned product code describes the smallest quantity unit which can be ordered. One shipping unit can contain one or more single products. When placing an order, for the quantity please enter single or multiples of a shipping unit.

---

**REFERENCES / LINKS**

For more information on the system guarantee and the terms and conditions of the guarantee visit

▶ [www.ledvance.com/system-guarantee](http://www.ledvance.com/system-guarantee)

---

**DISCLAIMER**

Subject to change without notice. Errors and omission excepted. Always make sure to use the most recent release.

## LUMILUX T5 FC | Circular fluorescent lamps 16 mm, with 2GX13 base

Product name	Product name ECG	EAN	Nominal current	Nominal wattage + Power loss	Luminous flux at 35 °C	Number of lighting outlets	Luminous flux at 25 °C
FC 22 W/2700K	QT-ECO 1x18-24/220-240 L		0.16 A	22.50 W	1650 lm	1	
	QT-ECO 1x18-24/220-240 S	4050300638560	0.16 A	22.50 W	1650 lm	1	
	QTi 1x14/24/21/39 GII	4008321383334	0.15 A	25.00 W	1800 lm	1	
	QTi 1x14/24 DIM	4050300870922	0.11 A	25.00 W	1750 lm	1	
	QTi 2x14/24/21/39 GII	4008321383396	0.21 A	49.00 W	1800 lm	2	
	QTi 2x14/24 DIM	4050300870946	0.22 A	49.00 W	1750 lm	2	
	QTi 3x14/24 DIM	4008321069719	0.32 A	73.00 W	1750 lm	3	
	QTi 4x14/24 DIM	4008321069993	0.43 A	98.00 W	1750 lm	4	
	QTi DALI 1x14/24 DIM	4050300870380	0.11 A	25.00 W	1750 lm	1	
	QTi DALI 2x14/24 DIM	4050300870861	0.22 A	49.00 W	1750 lm	2	
	QTi DALI 3x14/24 DIM	4008321069955	0.32 A	73.00 W	1750 lm	3	
	QTi DALI 4x14/24 DIM	4008321070036	0.43 A	98.00 W	1750 lm	4	
	QTi DALI-T/E 1x18-57 DIM	4008321060808	0.12 A	26.00 W	1800 lm	1	
	QTi DALI-T/E 2x18-42 DIM	4008321060822	0.22 A	51.00 W	1800 lm	2	
	QTi-T/E 1x18-57 DIM	4008321060860	0.12 A	26.00 W	1750 lm	1	
	QTi-T/E 2x18-42 DIM	4008321060846	0.22 A	51.00 W	1750 lm	2	
	QT-M 2x26-42/220-240 S	4008321110022	0.36 A	54.00 W	1600 lm	2	1600 lm
	QTP-M 1x26-42	4008321329134	0.12 A	25.00 W	1800 lm	1	
	QTP-M 2x26-32	4008321329158	0.22 A	49.00 W	1800 lm	2	