
HCI-E/P 100 W/830 WDL PB coated

POWERBALL HCI-E/P | Metal halide lamps for open and enclosed luminaires



Areas of application

- Shop interiors, shop windows
- Shopping arcades
- Foyers, reception areas
- Museums, exhibitions
- Exhibition halls and trade fairs
- Streets
- Pedestrian zones, public squares
- Parks and gardens
- Suitable for use in open and enclosed luminaires
- Outdoor applications only in suitable luminaires

Product benefits

- Very high efficiency
- Simple lamp installation/replacement in open luminaires
- Good color rendering
- Very good color stability
- UV values significantly below the maximum permitted thresholds to IEC 61167 thanks to UV filter

Product features

- POWERBALL ceramic technology
- Light color: warm white (830 WDL)
- Average lifetime: 12,000 hours



Product datasheet

Technical data

Electrical data

Nominal wattage	100.00 W
Lamp current	1.00000 A
Rated wattage	97.00 W
PFC capacitor at 50 Hz	12 μ F ¹⁾
Rated lamp efficacy (standard condition)	103 lm/W
Ignition voltage	3.6 / 5.0 kVp ²⁾

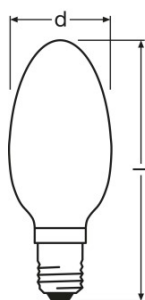
¹⁾ At rated voltage and $\cos \varphi \geq 0.9$

²⁾ Minimum; for superimposed ignition with square wave electronic ballast 3.0 kVp are sufficient / Maximum; this limit is for safety reasons

Photometrical data

Rated luminous flux	10000 lm
Color rendering index Ra	85
Color temperature	2900 K
Light color	830
Rated LLMF at 2,000 h	0.85
Rated LLMF at 4,000 h	0.79
Rated LLMF at 6,000 h	0.77
Rated LLMF at 8,000 h	0.75
Rated LLMF at 12,000 h	0.73
UV protection	Yes

Dimensions & weight



Diameter	54.0 mm
Length	138.0 mm
Product weight	120.00 g

Temperatures

Product datasheet

Maximum permitted outer bulb temperature	330 °C
Maximum permitted base edge temperature	190 °C

Lifespan

Rated lamp survival factor at 2,000 h	0.99
Rated lamp survival factor at 4,000 h	0.97
Rated lamp survival factor at 6,000 h	0.90
Rated lamp survival factor at 8,000 h	0.80
Rated lamp survival factor at 12,000 h	0.50
Lifespan B50	12000 h ¹⁾
Operation mode LLMF/LSF	50 Hz

¹⁾ At ECG

Additional product data

Base (standard designation)	E27
Design / version	Coated
System guarantee level	3 (1/5)
Lamp mercury content	8.5 mg

Capabilities

Dimmable	Yes ¹⁾
Burning position	Any
Enclosed luminaire required	No

¹⁾ In combination with POWERTRONIC PTo

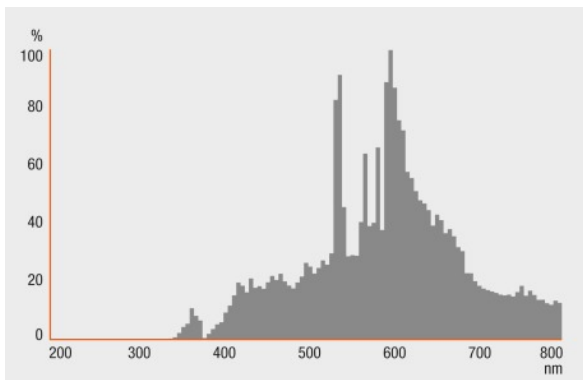
Certificates & standards

Energy efficiency class	A+
Energy consumption	107 kWh/1000h

Country specific categorizations

ILCOS	MES/UB-100/830-H/SL-E27-57/144
-------	--------------------------------

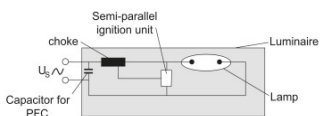
Light Distribution



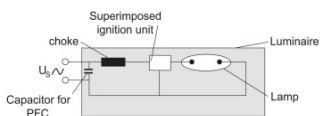
Spectral power distribution

System guarantee

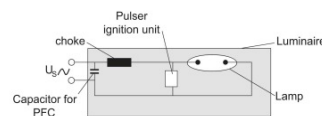
For the vast majority of our lamps we are offering an extended system guarantee in conjunction with OSRAM POWERTRONIC control gear.



Circuit diagram

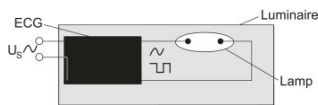


Circuit diagram



Circuit diagram

Product datasheet



Circuit diagram

Logistical Data

Product code	Product description	Packaging unit (Pieces/Unit)	Dimensions (height x width x length)	Volume	Gross weight
4008321692856	HCI-E/P 100 W/830 WDL PB coated	Shipping carton box 12	295 mm x 195 mm x 370 mm	21.28 dm ³	2692.00 g

The mentioned product code describes the smallest quantity unit which can be ordered. One shipping unit can contain one or more single products. When placing an order, for the quantity please enter single or multiples of a shipping unit.

References / Links

For more information on the system guarantee and the terms and conditions of the guarantee visit

- ▶ www.osram.com/system-guarantee

Disclaimer

Subject to change without notice. Errors and omission excepted. Always make sure to use the most recent release.