



Plusline Small 300W R7s 240V 1BB

Product family description
Mains- voltage linear with a coiled- coil
filament, giving white halogen light

Product Features

- Double- ended high- efficacy lamps
- Clear tubular UV block quartz bulb
- Reinforced filament supports for maximum safety and shock resistance resulting in longer lifetime
- Two arc- preventing fuses for greater safety
- Excellent colour rendering
- Constant light output during life

Product Benefits

- 20% more light than ordinary double- ended
- Long lifetime

Application

- Typically used in shop lighting applications
- Indoor: homes, offices, shops and museums
- Outdoor: billboards, car parks, security lighting and construction sites

Luminaires

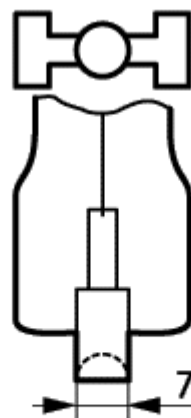
- Must be used in luminaires with a front cover glass

Product data	
Order code	058317 26
Full product code	871150005831726
Full product name	Plusline Small 300W R7s 240V 1BB
Order product name	Plusline S 300W R7s 240V 1BB/10X10BOX
Packing type	1 Blister
Pieces per pack	1
Packing configuration	10X10BOX
Packs per outerbox	100
Bar code on pack - EAN1	8711500058317

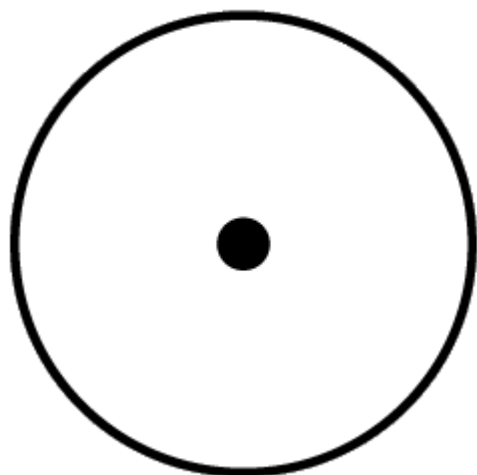
Product data	
Bar code on intermediate packing - EAN2	8711500501868
Bar code on outerbox - EAN3	8711500509062
Logistic code(s) - 12NC	9239 318 45740 9239 318 45735 9248 946 45501
ILCOS code	HDG//RS- 300- 240- R7s- 114,2
Net weight per piece	9.000 GR
Successor order code	
Cap- Base	R7s
Bulb	T11 [T 11mm]
Bulb Finish	Clear
Burning Position	any [Any/Universal]
Rated Lamp Wattage	300W
Voltage	240V
Energy Efficiency Label (EEL)	D
Colour Rendering Index	100 Ra8
Colour Temperature	2900 K
Lamp Luminous Flux	5600 Lm



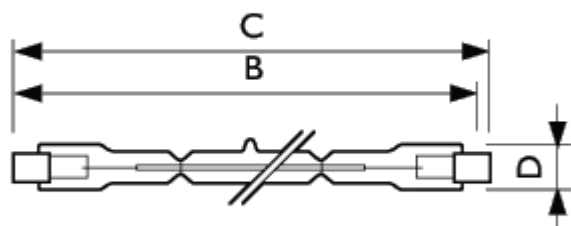
Plusline S R7s



Cap- Base R7s



Burning Position any



Plusline S R7s

	B	B	B	C	D
Full product name	Min	Nom	Max	Max	Max
Plusline Small 300W R7s	112.6	114.2	115.8	117.6	12

	B	B	B	C	D
Full product name	Min	Nom	Max	Max	Max
240V 1BB					

