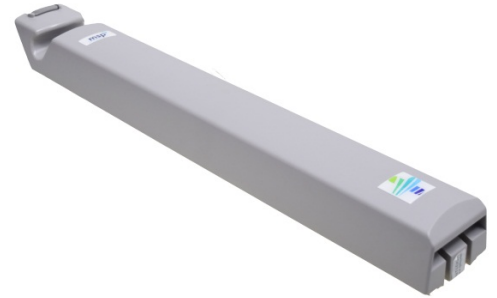


Battery pack 24V 6.0Ah (MSP-A-AH-00200)

Specifications

Voltage	24 Volt
Capacity	6 Ampère/hour
Amount of cells	4 battery cells
Type of battery	SLA
Charging time	6 hours with charger MSP-C-AH-00100
Materials	ABS, Brass, PVC, Copper,
Casing colour	Gray RAL7016, Dark gray
Dimensions LxWxH	728x101x70mm



Order information

Article number	MSP-A-AH-00200
Compatible with	KPA0100-XX / SPL3021
Arjo number	
Packaging	Individual packed, 90 pcs per pallet
M.O.Q.	1 piece
Delivery time	3-4 working days

Suitable for patient hoists

- + Sara Plus family
- + Tenor
- + Opera
- + Tempo
- + Encore

Battery cells Characteristics | Constant Current Discharge (Ampères) at 25°C

F.V/Time	1min	2min	3min	6min	10min	20min	30min	1h	2h	3h	5h	10h
1.85V/cell	30.6	30.0	24.0	20.6	13.2	7.2	5.5	3.7	1.8	1.4	0.9	0.5
1.80V/cell	40.3	32.6	31.5	21.4	15.4	8.4	6.0	3.9	1.9	1.45	0.91	0.62
1.75V/cell	51.3	36.8	35.6	22.3	17.1	9.6	6.6	4.1	2.0	1.50	0.98	0.68
1.70V/cell	26.4	26.5	21.0	15.9	10.6	6.8	5.2	3.5	1.7	1.35	0.8	0.43
1.65V/cell	37.0	29.7	28.5	19.3	14.5	7.0	5.3	3.7	1.79	1.39	0.86	0.49
1.60V/cell	44.5	31.2	29.8	20.2	16.5	7.1	5.6	3.9	1.86	1.42	0.89	0.55

Battery cells Characteristics | Constant Power Discharge (Watt/Cel) at 25°C

F.V/Time	1min	2min	3min	6min	10min	20min	30min	1h	2h	3h	5h	10h
1.85V/cell	45.5	44.5	35.5	30.8	21.3	13.7	7.9	6.0	3.7	2.74	1.86	0.98
1.80V/cell	62.2	49.8	48.9	32.4	24.6	14.3	10.2	6.6	3.6	2.86	1.92	1.11
1.75V/cell	72.8	52.5	50.7	33.7	29.0	15.6	10.7	6.8	3.7	3.00	1.98	1.24
1.70V/cell	41.7	42.0	33.0	26.4	18.2	12.9	7.2	6.0	3.1	2.47	1.61	0.86
1.65V/cell	54.7	44.5	43.5	30.3	22.4	13.7	7.9	6.2	3.45	2.72	1.67	0.98
1.60V/cell	67.7	48.8	48.4	30.9	24.8	15.0	9.7	6.4	3.59	2.74	1.73	1.11