

HID-PrimaVision Compact Independent for CDM

HID-PV C 35 /I CDM 220-240V 50/60Hz

Compact, lightweight and easy to use high performance range of electronic gears for optimal performance of 35W, 70W, 100W and 150W CDM lamps

Product data

• General Characteristics

Rated Number of Lamps	1 piece
Rated Ballast-Lamp Power	35
Rated Lamptype	CDM
Line Voltage	220-240 V
Line Frequency	50/60 Hz
Housing	/I
Lifetime 90% surv.@Tcaselife	40000 hr
Suitable for Outdoor use?	No

• Operating Characteristics

Automatic restart	Yes
Constant wattage deviation	-3%/+3%
Inrush current Peak	26 (max) A
Inrush current Width	0.25 ms
Max ballast on MCB(16A type B)	24 x
Mains voltage safety (AC)	-18%/+10%
Mains voltage performance (AC)	-10%/+6%
Operating frequency *	0.14 kHz
Overvoltage protection 320Vac	48 hr
PowerFactor 100% output power	0.95 -
Power losses gear	4.5 W
Ignition switch-off time	18 min
Ignition Voltage	4.0 (max) kV

Hum and Noise level 37 dB(A)

• Wiring Characteristics

Cable-Cap output-wires mutual	150 pF
Connector type	Insert
Max. cable length Device/Lamp	2.0 m
Wcs Ballast contacts	0.50-2.50 mm ²

• Temperature Characteristics

Active temperature protection	Yes
T-case life	75 C
T-case maximum	75 (max) C
T-ambient	-20 (min), 50 (max) C
T-storage	-25 (min), 75 (max) C

• Approval & Application Chars

EMI 9 kHz ... 300MHz	CISPR 15 ed 7.2
Safety Standard	EN 61347-2-12
Quality Standard	ISO 9000:2000
Environmental Standard	ISO 14001
Harmonic current emissions	EN 61000-3-2
EMC Immunity	EN 61547
Vibrations	IEC 68-2-6 Fc
Bumps	IEC 68-2-29 Eb
Humidity	IEC 928-13
Approval marks	ENEC
CE marking	Yes
Temperature marking	F



asimpleswitch.com

PHILIPS

sense and simplicity

HID-PrimaVision Compact Independent for CDM

• Product Dimensions

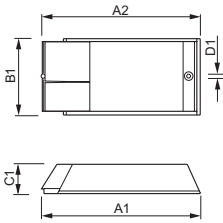
Length A1	188.0 mm
Fixing Hole Distance	170.0 mm
Length A2	
Width B1	62.7 mm
Height C1	34.5 mm
Fixing Hole Diameter	4.8 mm
D1	

• Product Data

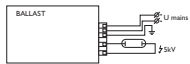
Order code	913700653166
Full product code	913700653166

Full product name	HID-PV C 35 /I CDM 220-240V 50/60Hz
Order product name	HID-PV C 35 /I CDM 220-240V 50/60Hz
Pieces per pack	1
Packing configuration	12
Packs per outerbox	12
Bar code on pack - EAN1	8711500881700
Bar code on outerbox - EAN3	8727900859737
Logistic code(s) - 12NC	913700653166
Net weight per piece	0.360 kg

Dimensional drawing



Product	A1 (Norm)	A2 (Norm)	B1 (Norm)	B2 (Norm)	C1 (Norm)	D1 (Norm)
HID-PV C 35 /I CDM 220-240V 50/60Hz NG	188.0	170.0	62.7	-	34.5	4.8



HID-PV CDM Gen 4.3



© 2011 Koninklijke Philips Electronics N.V.
All rights reserved.

Specifications are subject to change without notice. Trademarks are the property of Koninklijke Philips Electronics N.V. or their respective owners.

www.philips.com/lighting

2011, June 7
data subject to change