



HID-DynaVision LumiStep Xtreme for CPO

HID-DV LS-6 Xt 140 /S CPO-TW 220-240V

Standalone Dimmable Xtreme driver for CosmoPolis lamp

Product data

• General Characteristics

Interface	LS-6
Rated Number of Lamps	1 piece
Rated Ballast-Lamp Power	140
Rated Lamptype	CPO-TW
Line Voltage	220-240 V
Line Current	0.66 A
Line Frequency	50/60 Hz
Housing	/S
IP Classification	34
Luminaires	
Lifetime 90% surv.@Tcaselife	80000 hr
Lifetime 95% surv.@Tcaselife	60000 hr
Suitable for Outdoor use?	Yes

• Operating Characteristics

Automatic restart	Yes
Inrush current Peak	55 A
Inrush current Width	0.45 ms
Max ballast on MCB(16A type B)	5 x
Lamp Power Tolerance	-3%/+3%
Earth leakage current	0.7 (max) mA
Mains voltage safety (AC)	-27%/+10%
Mains voltage performance (AC)	-10%/+6%
Min. Mains voltage operational	160 (min) V
Output peak voltage	2100 (max) V

Operating frequency *	0.40 kHz
Overvoltage protection 320Vac	48 hr
Overvoltage protection 350Vac	2 hr
Overvoltage protection 400Vac	5 min
PowerFactor 100% output power	0.95 -
Regulating level power	60%-100%
Fade Rate Down	0.667 s
Fade Rate Up	12 s
Run-Up Time before Dimming	15 min
Ignition switch-off time	20 (max) min
Hum and Noise level	37 dB(A)

• System Chars on driver level

Rated Lamp Power on CPO-TW	140
System Power on CPO-TW	152.5
Lamp Power on CPO-TW	140.0
Power Loss on CPO-TW	12.5

• Wiring Characteristics

Connector type	Insert
Striplength	10.0 mm
Wcs Ballast contacts	0.50-2.50 mm ²

PHILIPS
sense and simplicity

HID-DynaVision LumiStep Xtreme for CPO

• Temperature Characteristics

Active temperature protection	Yes
F-marking	Yes
T-case switch-off	90 (min) C
T-ambient	-20 (min), 50 (max) C
T-storage	-20 (min), 80 (max) C

• Approval & Application Chars

EMI 9 kHz ... 300MHz Safety Standard	CISPR 15 ed 7.2 IEC 607, 609, 926, 928 [No Standard for HID Lamp drivers exists. Requirements in these standards to be used if considered relevant for the product.]
Quality Standard	ISO 9000:2000
Environmental Standard	ISO 14001
Harmonic current emissions	IEC 61000-3-2
Vibrations	IEC 68-2-6 Fc (10-150Hz, 2G)
Bumps	IEC 68-2-29 Eb (10G/16ms)
Humidity	EN 61347-2-12 clause 11
Approval marks	ENEC / VDE-EMV
CE marking	Yes
ENEC certificate	Yes
VDE certificate	No
VDE-EMV certificate	Yes
ICEUR certificate	No
Surge Protection	EN61547 (L-L 2kV, L-G 4kV), 10kV TIL

CB Certificate Yes

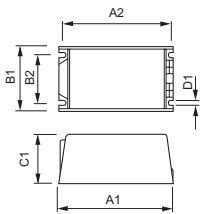
• Product Dimensions

Length A1	150.0 mm
Fixing Hole Distance	140.7 mm
Length A2	
Width B1	65.0 mm
Fixing Hole Distance	46.8 mm
Width B2	
Height C1	65.0 mm
Fixing Hole Diameter D1	5.0 mm

• Product Data

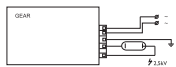
Order code	913700642672
Full product code	913700642672
Full product name	HID-DV LS-6 Xt 140 /S CPO-TW 220-240V
Order product name	HID-DV LS-6 Xt 140 /S CPO-TW 220-240V
Pieces per pack	1
Packing configuration	12
Packs per outerbox	12
Bar code on pack - EAN1	8711500880994
Bar code on outerbox - EAN3	8727900813494
Logistic code(s) - 12NC	913700642672
Net weight per piece	0.950 kg

Dimensional drawing



HID-DV DALI & LS Xt

Product	A1 (Norm)	A2 (Norm)	B1 (Norm)	B2 (Norm)	C1 (Norm)	D1 (Norm)
HID-DV LS-6 Xt 140 /S CPO-TW 220-240V	150.0	140.7	65.0	46.8	65.0	5.0



HID-DV LS Xt



© 2011 Koninklijke Philips Electronics N.V.
All rights reserved.

Specifications are subject to change without notice. Trademarks are the property of Koninklijke Philips Electronics N.V. or their respective owners.

www.philips.com/lighting

2011, May 10
data subject to change