

# HID-HeavyDuty BSN semi-parallel for SON/ CDO/MH/HPI

HID-HeavyDuty BSN 100 L34-TS 240V 50Hz HD1-123

Encapsulated electromagnetic copper/iron ballasts for use with an external semi-parallel ignitor for CDM, CDO, MH, HPI (Plus) and SON lamps (no ignitor needed for SON-I lamps)

## Product data

### • General Characteristics

Rated Number of Lamps	1 piece
Rated Ballast-Lamp Power	100
Rated Lamptype	SON/CDO
Application code	L34-TS
Line Voltage	240 V
Line Frequency	50 Hz
Design	HD1-123

### • Operating Characteristics

Input current with PF-correct.	0.60 A
Input current w/o PF-correct.	1.20 A
Mains voltage safety (AC)	-10%/+10%
Mains voltage performance (AC)	-8%/+6%
PowerFactor 100% output power	0.87 -
PowerFactor w/o PF compens.	0.40 -
Power losses gear	13.8 W

### • Wiring Characteristics

Connector type	Screw
Striplength	7.0 mm
Wcs Ballast contacts	0.70-6.00 mm <sup>2</sup>

### • Temperature Characteristics

Active temperature protection	Yes
-------------------------------	-----

T-storage	-30 (min), 130 (max) C
T-winding maximum (tw)	130 (max) C
Delta-T normal conditions	75 C

### • Approval & Application Chars

CE marking	Yes
ENEC certificate	Yes

### • Product Dimensions

Length A1	123.0 mm
Fixing Hole Distance	108.0 mm
Length A2	
Width B1	65.0 mm
Height C1	53.0 mm
Fixing Hole Diameter D1	6.2 mm

### • Product Data

Order code	913700226826
Full product code	913700226826
Full product name	BSN 100 L34-TS 240V 50Hz HD1-123
Order product name	BSN 100 L34-TS 240V 50Hz HD1-123
Pieces per pack	1
Packing configuration	6
Packs per outerbox	6
Bar code on pack - EAN1	8711500059741
Bar code on outerbox - EAN3	8711500061621

# PHILIPS

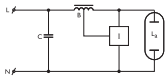
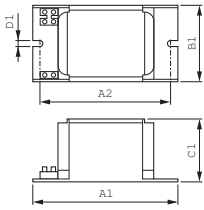
sense and simplicity

# HID-HeavyDuty BSN semi-parallel for SON/CDO/MH/HPI

Logistic code(s) - 913700226826  
12NC

Net weight per piece 1.300 kg

## Dimensional drawing



Product	A1 (Norm)	A2 (Norm)	B1 (Norm)	C1 (Norm)	D1 (Norm)
BSN 100 L34-TS 240V 50Hz HD1-123	123.0	108.0	65.0	53.0	6.2



© 2011 Koninklijke Philips Electronics N.V.  
All rights reserved.

Specifications are subject to change without notice. Trademarks are the property of Koninklijke Philips Electronics N.V. or their respective owners.

[www.philips.com/lighting](http://www.philips.com/lighting)

2011, June 7  
data subject to change