



# HID-Constant wattage BSX for SOX

BSX 91 H96 220-240V 50Hz CW-149/67

Constant-wattage (potted) electromagnetic copper/iron ballasts for use with an external ignitor for SOX and SOX-E lamps

## Product data

### • General Characteristics

Rated Number of Lamps	1 piece
Rated Ballast-Lamp Power	91
Rated Lamptype	SOX-E
Application code	H96
Line Voltage	220-240 V
Line Frequency	50 Hz
Design	CW-149/67

### • Operating Characteristics

Mains voltage safety (AC)	-10%/+10%
Mains voltage performance (AC)	-8%/+6%
Power losses gear	16.5 W

### • Wiring Characteristics

Connector type	Screw
Striplength	6.0 mm
Wcs Ballast contacts	0.75-2.50 mm <sup>2</sup>

### • Temperature Characteristics

T-storage	-25 (min), 80 (max) C
T-winding maximum (tw)	130 (max) C
Delta-T normal conditions	55 C

### • Approval & Application Chars

CE marking	Yes
------------	-----

ENEC certificate Yes

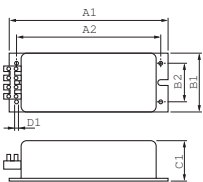
### • Product Dimensions

Length A1	149.0 mm
Fixing Hole Distance	135.0 mm
Length A2	
Width B1	80.0 mm
Fixing Hole Distance	42.0 mm
Width B2	
Height C1	67.0 mm
Fixing Hole Diameter D1	4.2 mm

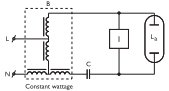
### • Product Data

Order code	913668007226
Full product code	913668007226
Full product name	BSX 91 H96 220-240V 50Hz CW-149/67
Order product name	BSX 91 H96 220-240V 50Hz CW-149/67
Pieces per pack	1
Packing configuration	8
Packs per outerbox	8
Bar code on pack - EAN1	8711500920393
Bar code on outerbox - EAN3	8711500932242
Logistic code(s) - 12NC	913668007226
Net weight per piece	2.900 kg

## Dimensional drawing



Product	A1 (Norm)	A2 (Norm)	B1 (Norm)	B2 (Norm)	C1 (Norm)	D1 (Norm)
BSX 91 H96 220-240V 50Hz CW-149/67	149.0	135.0	80.0	42.0	67.0	4.2



© 2011 Koninklijke Philips Electronics N.V.  
All rights reserved.

Specifications are subject to change without notice. Trademarks are the property of Koninklijke Philips Electronics N.V. or their respective owners.

[www.philips.com/lighting](http://www.philips.com/lighting)

2011, May 14  
data subject to change