

HID-Basic BSX for SOX

BSX 35 L81 230V 50Hz BC0-196

Impregnated electromagnetic copper/iron ballasts for use with an external ignitor for SOX and SOX-E lamps

Product data

• General Characteristics

Rated Number of Lamps	1 piece
Rated Ballast-Lamp Power	35
Rated Lamptype	SOX
Application code	L81
Line Voltage	230 V
Line Frequency	50 Hz
Design	BC0-196

• Operating Characteristics

Input current with PF-correct.	0.22 A
Input current w/o PF-correct.	0.60 A
Mains voltage safety (AC)	-10%/+10%
Mains voltage performance (AC)	-8%/+6%
PowerFactor w/o PF compens.	0.35 -
Power losses gear	11.7 W

• Wiring Characteristics

Connector type	Insert
Striplength	7.0 mm
Wcs Ballast contacts	0.70-1.50 mm ²

• Temperature Characteristics

T-storage	-25 (min), 80 (max) C
T-winding maximum (tw)	130 (max) C

Delta-T normal conditions	60 C
---------------------------	------

• Approval & Application Chars

CE marking	Yes
ENEC certificate	Yes

• Product Dimensions

Length A1	196.0 mm
Fixing Hole Distance	180.0 mm
Length A2	
Length A3	54.0 mm
Length A4	54.0 mm
Width B1	39.0 mm
Fixing Hole Distance	20.0 mm
Width B2	
Height C1	28.0 mm
Height C3	1.5 mm
Fixing Hole Diameter D1	4.2 mm

• Product Data

Order code	913700200626
Full product code	913700200626
Full product name	BSX 35 L81 230V 50Hz BC0-196
Order product name	BSX 35 L81 230V 50Hz BC0-196
Pieces per pack	1
Packing configuration	24
Packs per outerbox	24
Bar code on pack - EAN1	8711500920508
Bar code on outerbox - EAN3	8711500944085

PHILIPS

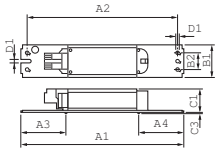
sense and simplicity

HID-Basic BSX for SOX

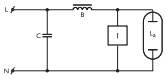
Logistic code(s) - 913700200626
12NC

Net weight per piece 0.925 kg

Dimensional drawing



Product	A1 (Norm)	A2 (Norm)	A3 (Norm)	A4 (Norm)	B1 (Norm)	B2 (Norm)	C1 (Norm)	C3 (Norm)	D1 (Norm)
BSX 35 L81 230V 50Hz BC0-196	196.0	180.0	54.0	54.0	39.0	20.0	28.0	1.5	4.2



© 2011 Koninklijke Philips Electronics N.V.
All rights reserved.

Specifications are subject to change without notice. Trademarks are the property of Koninklijke Philips Electronics N.V. or their respective owners.

www.philips.com/lighting

2011, May 14
data subject to change