

# HID-Basic BSX for SOX

BSX 26 L82 240V 50Hz BC0-196

Impregnated electromagnetic copper/iron ballasts for use with an external ignitor for SOX and SOX-E lamps

## Product data

### • General Characteristics

Rated Number of Lamps	1 piece
Rated Ballast-Lamp Power	26
Rated Lamptype	SOX-E
Application code	L82
Line Voltage	240 V
Line Frequency	50 Hz
Design	BC0-196

### • Operating Characteristics

Input current with PF-correct.	0.16 A
Input current w/o PF-correct.	0.45 A
Mains voltage safety (AC)	-10%/+10%
Mains voltage performance (AC)	-8%/+6%
PowerFactor w/o PF compens.	0.35 -
Power losses gear	9.8 W

### • Wiring Characteristics

Connector type	Insert
Striplength	7.0 mm
Wcs Ballast contacts	0.70-1.50 mm <sup>2</sup>

### • Temperature Characteristics

T-storage	-25 (min), 80 (max) C
T-winding maximum (tw)	130 (max) C

Delta-T normal conditions	55 C
---------------------------	------

### • Approval & Application Chars

CE marking	Yes
ENEC certificate	Yes

### • Product Dimensions

Length A1	196.0 mm
Fixing Hole Distance	180.0 mm
Length A2	
Length A3	54.0 mm
Length A4	54.0 mm
Width B1	39.0 mm
Fixing Hole Distance	20.0 mm
Width B2	
Height C1	28.0 mm
Height C3	1.5 mm
Fixing Hole Diameter D1	4.2 mm

### • Product Data

Order code	913700200826
Full product code	913700200826
Full product name	BSX 26 L82 240V 50Hz BC0-196
Order product name	BSX 26 L82 240V 50Hz BC0-196
Pieces per pack	1
Packing configuration	24
Packs per outerbox	24
Bar code on pack - EAN1	8711500920515
Bar code on outerbox - EAN3	8711500944023

# PHILIPS

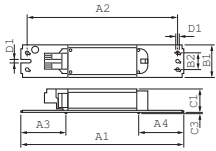
sense and simplicity

# HID-Basic BSX for SOX

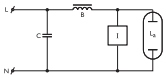
Logistic code(s) - 913700200826  
12NC

Net weight per piece 0.770 kg

## Dimensional drawing



Product	A1 (Norm)	A2 (Norm)	A3 (Norm)	A4 (Norm)	B1 (Norm)	B2 (Norm)	C1 (Norm)	C3 (Norm)	D1 (Norm)
BSX 26 L82 240V 50Hz BC0-196	196.0	180.0	54.0	54.0	39.0	20.0	28.0	1.5	4.2



© 2011 Koninklijke Philips Electronics N.V.  
All rights reserved.

Specifications are subject to change without notice. Trademarks are the property of Koninklijke Philips Electronics N.V. or their respective owners.

[www.philips.com/lighting](http://www.philips.com/lighting)

2011, May 14  
data subject to change