

HID-Basic BSN/BMH semi-parallel for SON/CDO/CDM/MH/HPI

BSN 400 L406-ITS 220/230V 50Hz BC3-166

Impregnated electromagnetic copper/iron ballasts for use with an external semi parallel ignitor for CDM, CDO, MH, HPI (Plus) and SON lamps

Product data

• General Characteristics

Rated Number of Lamps	1 piece
Rated Ballast-Lamp Power	400
Rated Lamptype	SON/HPI
Application code	L406-ITS
Line Voltage	220/230 V
Line Frequency	50 Hz
Design	BC3-166

• Operating Characteristics

Input current with PF-correct.	2.30 A
Input current w/o PF-correct.	4.45 A
Mains voltage safety (AC)	-10%/+10%
Mains voltage performance (AC)	-8%/+6%
PowerFactor 100% output power	0.87 -
PowerFactor w/o PF compens.	0.45 -
Power losses gear	28/29 W

• Wiring Characteristics

Connector type	Screw
Striplength	7.0 mm
Wcs Ballast contacts	0.70-6.00 mm ²

• Temperature Characteristics

Active temperature protection	Yes
-------------------------------	-----

T-storage	-25 (min), 80 (max) C
T-winding maximum (tw)	130 (max) C
Delta-T normal conditions	70 C

• Approval & Application Chars

CE marking	Yes
ENEC certificate	Yes

• Product Dimensions

Length A1	166.0 mm
Fixing Hole Distance	145.0 mm
Length A2	
Width B1	97.0 mm
Fixing Hole Distance	78.5 mm
Width B2	
Height C1	83.0 mm
Fixing Hole Diameter D1	6.5 mm

• Product Data

Order code	913700252426
Full product code	913700252426
Full product name	BSN 400 L406-ITS 220/230V 50Hz BC3-166
Order product name	BSN 400 L406-ITS 220/230V 50Hz BC3-166
Pieces per pack	1
Packing configuration	2
Packs per outerbox	2
Bar code on pack - EAN1	8711500539359

PHILIPS

sense and simplicity

HID-Basic BSN/BMH semi-parallel for SON/CDO/CDM/MH/HPI

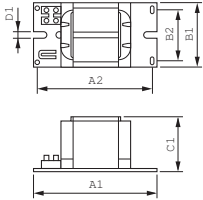
Bar code on
outerbox - EAN3
Logistic code(s) -
12NC

8711500539366

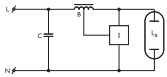
913700252426

Net weight per piece 4.300 kg

Dimensional drawing



Product	A1 (Norm)	A2 (Norm)	B1 (Norm)	B2 (Norm)	C1 (Norm)	D1 (Norm)
BSN 400 L406-ITS 220/230V 50Hz BC3-166	166.0	145.0	97.0	78.5	83.0	6.5



© 2011 Koninklijke Philips Electronics N.V.
All rights reserved.

Specifications are subject to change without notice. Trademarks are the property of Koninklijke Philips Electronics N.V. or their respective owners.

www.philips.com/lighting

2011, May 14
data subject to change