

HID-HeavyDuty BSN semi-parallel for SON/ CDO/MH/HPI

HID-HeavyDuty BSN 250 L33-TS 230V 50Hz HD2-151

Encapsulated electromagnetic copper/iron ballasts for use with an external semi-parallel ignitor for CDM, CDO, MH, HPI (Plus) and SON lamps (no ignitor needed for SON-I lamps)

Product data

• General Characteristics

Rated Number of Lamps	1 piece
Rated Ballast-Lamp Power	250
Rated Lamptype	SON/HPI/CDM
Application code	L33-TS
Line Voltage	230 V
Line Frequency	50 Hz
Design	HD2-151

• Operating Characteristics

Input current with PF-correct.	1.40 A
Input current w/o PF-correct.	3.00 A
Mains voltage safety (AC)	-10%/+10%
Mains voltage performance (AC)	-8%/+6%
PowerFactor 100% output power	0.87 -
PowerFactor w/o PF compens.	0.40 -
Power losses gear	29.0 W

• Wiring Characteristics

Connector type	Screw
Striplength	7.0 mm
Wcs Ballast contacts	0.70-6.00 mm ²

• Temperature Characteristics

Active temperature protection	Yes
-------------------------------	-----

T-storage	-30 (min), 130 (max) C
T-winding maximum (tw)	130 (max) C
Delta-T normal conditions	80 C

• Approval & Application Chars

CE marking	Yes
ENEC certificate	Yes

• Product Dimensions

Length A1	151.0 mm
Fixing Hole Distance	132.5 mm
Length A2	
Width B1	81.0 mm
Height C1	66.0 mm
Fixing Hole Diameter D1	6.2 mm

• Product Data

Order code	913700226326
Full product code	913700226326
Full product name	BSN 250 L33-TS 230V 50Hz HD2-151
Order product name	BSN 250 L33-TS 230V 50Hz HD2-151
Pieces per pack	1
Packing configuration	6
Packs per outerbox	6
Bar code on pack - EAN1	8711500059642
Bar code on outerbox - EAN3	8711500059659

PHILIPS

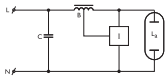
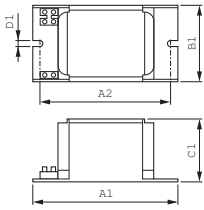
sense and simplicity

HID-HeavyDuty BSN semi-parallel for SON/CDO/MH/HPI

Logistic code(s) - 913700226326
12NC

Net weight per piece 2.700 kg

Dimensional drawing



Product	A1 (Norm)	A2 (Norm)	B1 (Norm)	C1 (Norm)	D1 (Norm)
BSN 250 L33-TS 230V 50Hz HD2-151	151.0	132.5	81.0	66.0	6.2



© 2011 Koninklijke Philips Electronics N.V.
All rights reserved.

Specifications are subject to change without notice. Trademarks are the property of Koninklijke Philips Electronics N.V. or their respective owners.

www.philips.com/lighting

2011, June 7
data subject to change