



# CorePro LED PLL



## CorePro LED PLL Mains 24W 830 4P

Philips CorePro LED PLL is the ideal uplamping solution for downlights & luminaires in a wide range of general lighting applications. It integrates a LED light source into a traditional fluorescent form factor to offer superb energy savings over a lifetime that's twice as long as fluorescent alternatives.

### Product data

| General Information                   |                    |
|---------------------------------------|--------------------|
| Cap-Base                              | 2G11 [2G11]        |
| Nominal lifetime                      | 30,000 hour(s)     |
| Switching Cycle                       | 200,000            |
| Lighting Technology                   | LED                |
| Flux measurement reference            | Sphere             |
| Light Technical                       |                    |
| Color Code                            | 830 [CCT of 3000K] |
| Beam Angle (Nom)                      | 160 degree(s)      |
| Luminous Flux                         | 3,200 lumen        |
| Color Designation                     | White (WH)         |
| Correlated Color Temperature (Nom)    | 3000 K             |
| Luminous Efficacy (rated) (Nom)       | 133 lm/W           |
| Color Consistency                     | <6                 |
| Color rendering index (CRI)           | 80                 |
| LLMF At End Of Nominal Lifetime (Nom) | 70 %               |
| Operating and Electrical              |                    |
| Line Frequency                        | 50 to 60 Hz        |
| Input Frequency                       | 50 to 60 Hz        |
| Power Consumption                     | 24 W               |
| Lamp Current (Nom)                    | 127 mA             |

| Starting Time (Nom)       | 0.5 s  |
|---------------------------|--|
| Warm-up time to 60% light | 0.5 s  |
| Power Factor (Fraction)   | 0.9  |
| Voltage (Nom)             | 220-240 V  |
| Temperature               |  |
| Ambient temperature range | -20 °C to 45 °C                                      |
| T-Case Maximum (Nom)      | 75 °C  |
| Controls and Dimming      |  |
| Dimmable                  | No   |
| Mechanical and Housing    |  |
| Bulb Finish               | Frosted  |
| Bulb Material             | Glass  |
| Product Length            | 500 mm   |
| Bulb Shape                | Tube, single-ended                                   |
| Approval and Application  |  |
| Energy Efficiency Class   | E  |
| Energy Saving Product     | Yes  |
| Approval Marks            | RoHS compliance TUV CE marking KEMA Keur certificate |

# CorePro LED PLL

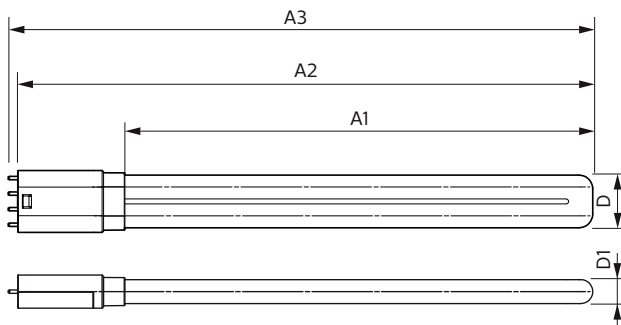
|                               |         |
|-------------------------------|---------|
| Energy Consumption kWh/1000 h | 24 kWh  |
| EPREL Registration Number     | 1370829 |
| EU RoHS compliant             | Yes     |

## Product Data

|                    |                                  |
|--------------------|----------------------------------|
| Full product code  | 872016915711800                  |
| Order product name | CorePro LED PLL Mains 24W 830 4P |
| Order code         | 929003592802                     |

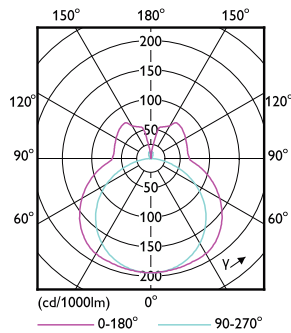
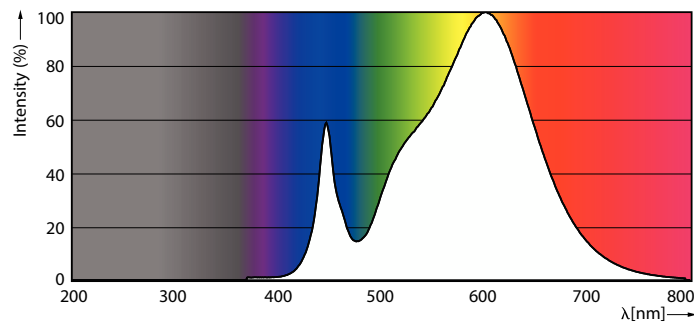
|                                 |                                  |
|---------------------------------|----------------------------------|
| Numerator - Quantity Per Pack   | 1                                |
| Numerator - Packs per outer box | 10                               |
| Material number (12NC)          | 929003592802                     |
| Full product name               | CorePro LED PLL Mains 24W 830 4P |
| EAN/UPC - Case                  | 8720169157125                    |

## Dimensional drawing



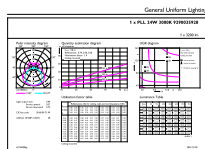
| Product                          | D1    | D2 | A1     | A2     | A3     |
|----------------------------------|-------|----|--------|--------|--------|
| CorePro LED PLL Mains 24W 830 4P | 17 mm |    | 453 mm | 528 mm | 535 mm |

## Photometric data



Spectral Power Distribution Colour

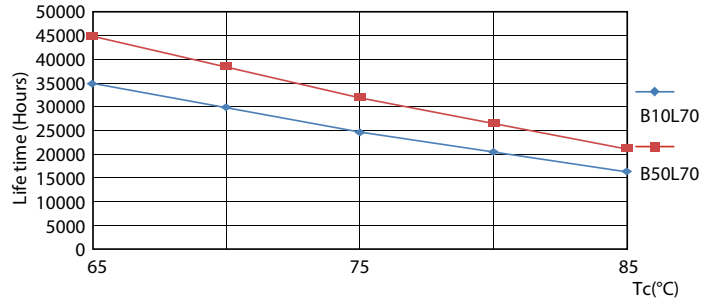
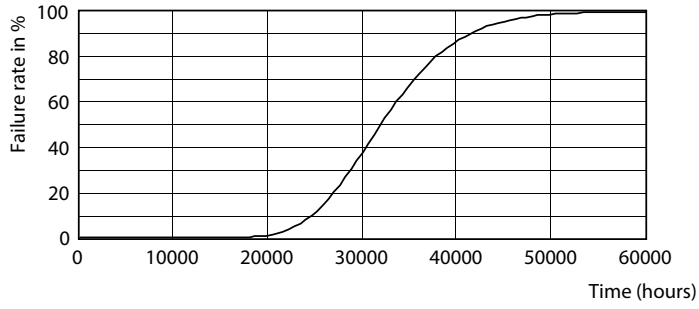
Light Distribution Diagram



General uniform lighting - CorePro LED PLL Mains 24W 830 4P

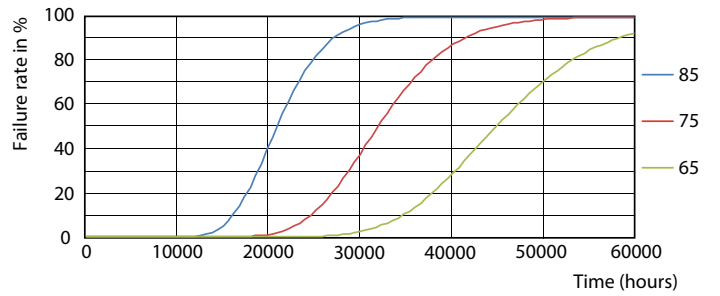
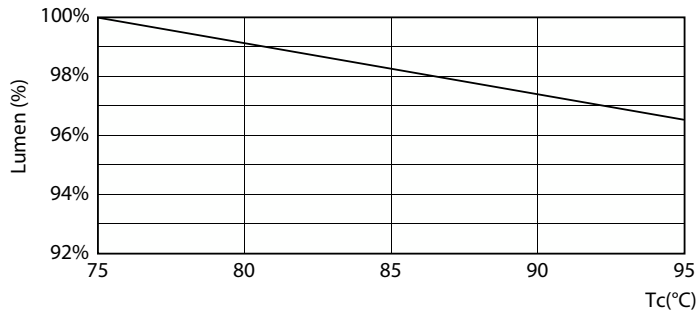
# CorePro LED PLL

## Lifetime



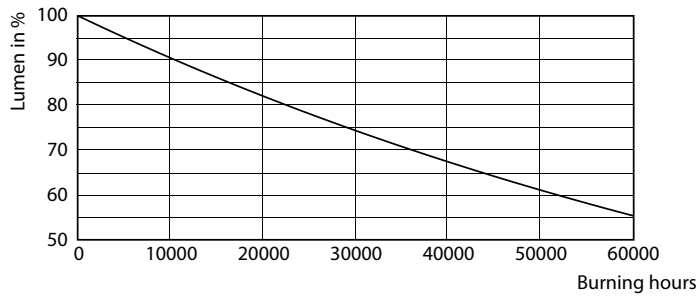
Life Expectancy Diagram - CorePro LED PLL Mains 24W 830 4P

Life Expectancy Diagram



Lumen Maintenance Diagram

Life Expectancy Diagram



Lumen Maintenance Diagram - CorePro LED PLL Mains 24W 830 4P

