

CorePro LED PLT 4P



CorePro LED PLT HF 18.5W 830 4P GX24q-4

The CorePro LED PLT 4P integrates a LED light source into a traditional fluorescent form factor. This product is the ideal solution for uplampping in general lighting applications: it meets basic lighting requirements, offers significant energy savings, and is environmentally friendly

Product data

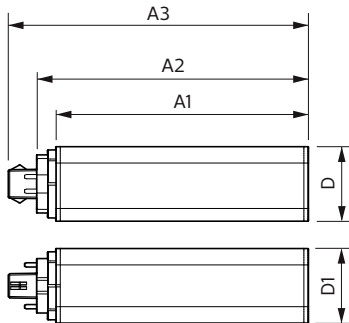
General Information		Warm-up time to 60% light	
Cap-Base	GX24Q-4 [GX24q-4]		0.5 s
Nominal lifetime	30,000 hour(s)	Power Factor (Fraction)	0.9
Switching Cycle	200,000	Voltage (Nom)	20-60 V
Lighting Technology	LED	Temperature	
Flux measurement reference	Sphere	Ambient temperature range	-20 °C to 35 °C
Light Technical		T-Case Maximum (Nom)	75 °C
Color Code	830 [CCT of 3000K]	Controls and Dimming	
Beam Angle (Nom)	120 degree(s)	Dimmable	No
Luminous Flux	2,100 lumen	Mechanical and Housing	
Color Designation	White (WH)	Bulb Finish	Frosted
Correlated Color Temperature (Nom)	3000 K	Bulb Material	Plastic
Luminous Efficacy (rated) (Nom)	113 lm/W	Product Length	200 mm
Color Consistency	<6	Bulb Shape	Tube, single-ended
Color rendering index (CRI)	82	Approval and Application	
LLMF At End Of Nominal Lifetime (Nom)	70 %	Energy Efficiency Class	F
Operating and Electrical		Energy Saving Product	Yes
Line Frequency	20K-80K Hz	Approval Marks	RoHS compliance TUV CE marking KEMA Keur certificate
Input Frequency	20K-80K Hz	Energy Consumption kWh/1000 h	19 kWh
Power Consumption	18.5 W		
Starting Time (Nom)	0.5 s		

CorePro LED PLT 4P

EPREL Registration Number	1361426
CE mark	Yes
EU RoHS compliant	Yes
Product Data	
Full product code	871951448788800
Order product name	CorePro LED PLT HF 18.5W 830 4P GX24q-4
Order code	929003576902

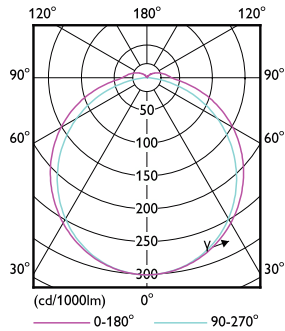
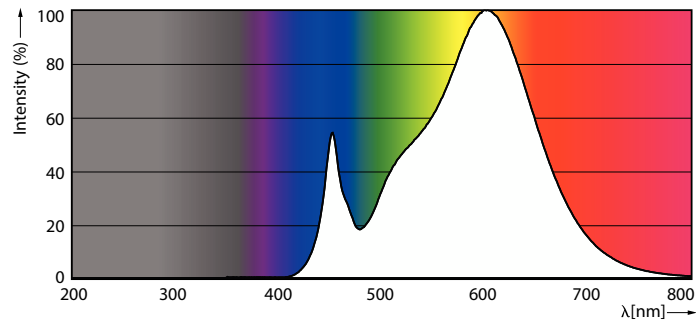
Numerator - Quantity Per Pack	1
Numerator - Packs per outer box	20
Material number (12NC)	929003576902
Full product name	CorePro LED PLT HF 18.5W 830 4P GX24q-4
EAN/UPC - Case	8719514487895

Dimensional drawing



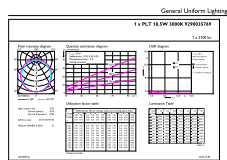
Product	D1	D2	A1	A2	A3
CorePro LED PLT HF 18.5W 830 4P GX24q-4	42 mm		139 mm	151 mm	166 mm

Photometric data



Spectral Power Distribution Colour

Light Distribution Diagram

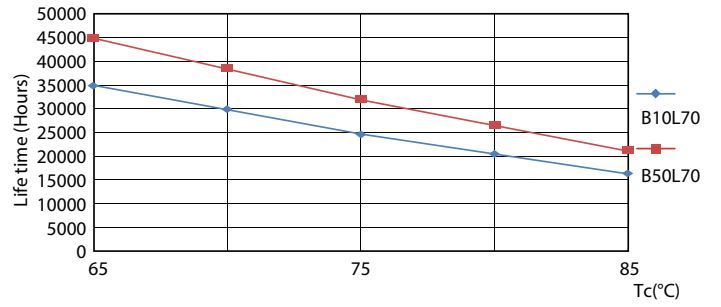
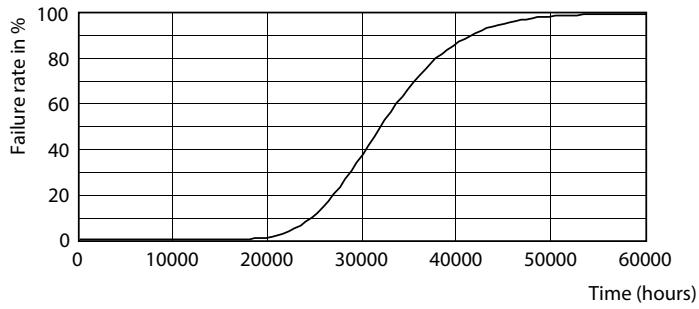


General Uniform Lighting - CorePro LED PLT HF 18.5W 830 4P GX24q-4

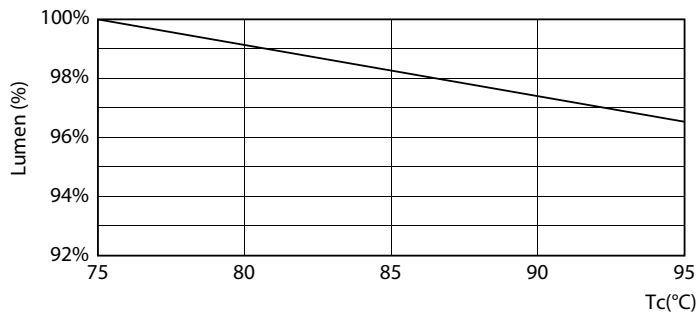
General uniform lighting - CorePro LED PLT HF 18.5W 830 4P GX24q-4

CorePro LED PLT 4P

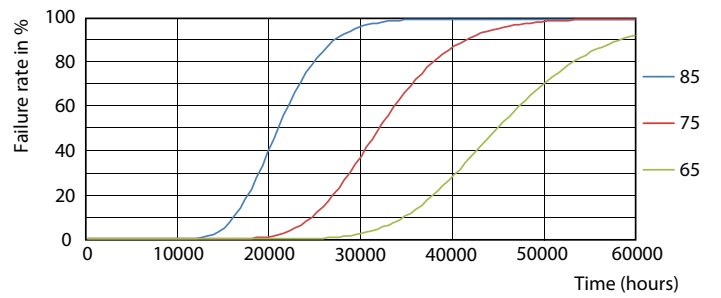
Lifetime



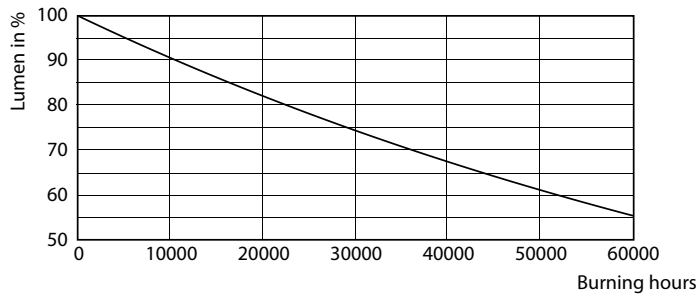
Life Expectancy Diagram - CorePro LED PLT HF 18.5W 830 4P GX24q-4



Life Expectancy Diagram



Lumen Maintenance Diagram



Life Expectancy Diagram

Lumen Maintenance Diagram - CorePro LED PLT HF 18.5W 830 4P GX24q-4

CorePro LED PLT 4P

