



CorePro LED PLT 4P



CorePro LED PLT HF 15W 840 4P GX24q-3

The CorePro LED PLT 4P integrates a LED light source into a traditional fluorescent form factor. This product is the ideal solution for uplampping in general lighting applications: it meets basic lighting requirements, offers significant energy savings, and is environmentally friendly

Product data

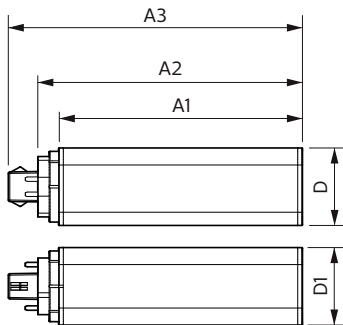
General Information		Warm-up time to 60% light	
Cap-Base	GX24Q-3 [GX24q-3]		0.5 s
Nominal lifetime	30,000 hour(s)	Power Factor (Fraction)	0.9
Switching Cycle	200,000	Voltage (Nom)	20-60 V
Lighting Technology	LED	Temperature	
Flux measurement reference	Sphere	Ambient temperature range	-20 °C to 35 °C
		T-Case Maximum (Nom)	70 °C
Light Technical		Controls and Dimming	
Color Code	840 [CCT of 4000K]	Dimmable	No
Beam Angle (Nom)	120 degree(s)	Mechanical and Housing	
Luminous Flux	1,800 lumen	Bulb Finish	Frosted
Color Designation	Cool White (CW)	Bulb Material	Plastic
Correlated Color Temperature (Nom)	4000 K	Product Length	200 mm
Luminous Efficacy (rated) (Nom)	120 lm/W	Bulb Shape	Tube, single-ended
Color Consistency	<6	Approval and Application	
Color rendering index (CRI)	82	Energy Efficiency Class	E
LLMF At End Of Nominal Lifetime (Nom)	70 %	Energy Saving Product	Yes
Operating and Electrical		Approval Marks	RoHS compliance TUV CE marking KEMA Keur certificate
Line Frequency	20K-80K Hz	Energy Consumption kWh/1000 h	15 kWh
Input Frequency	20K-80K Hz		
Power Consumption	15 W		
Starting Time (Nom)	0.5 s		

CorePro LED PLT 4P

EPREL Registration Number	1361425
CE mark	Yes
EU RoHS compliant	Yes
Product Data	
Full product code	871951448786400
Order product name	CorePro LED PLT HF 15W 840 4P GX24q-3
Order code	929003576802

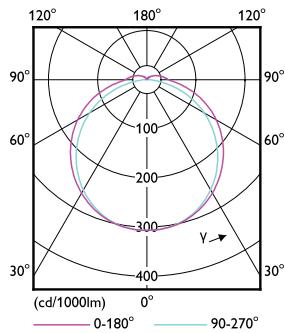
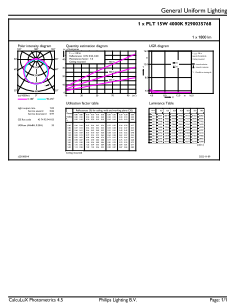
Numerator - Quantity Per Pack	1
Numerator - Packs per outer box	20
Material number (12NC)	929003576802
Full product name	CorePro LED PLT HF 15W 840 4P GX24q-3
EAN/UPC - Case	8719514487871

Dimensional drawing



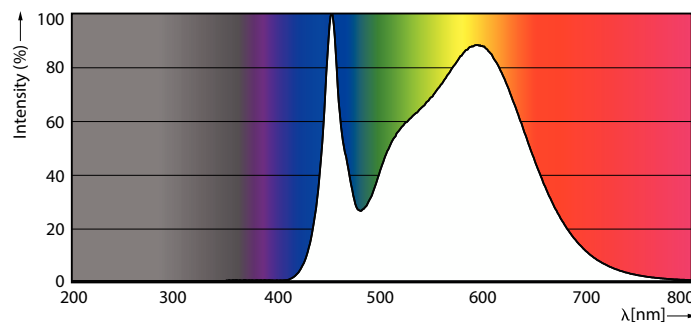
Product	D1	D2	A1	A2	A3
CorePro LED PLT HF 15W 840 4P GX24q-3	42 mm		129 mm	141 mm	156 mm

Photometric data



General uniform lighting - CorePro LED PLT HF 15W 840 4P GX24q-3

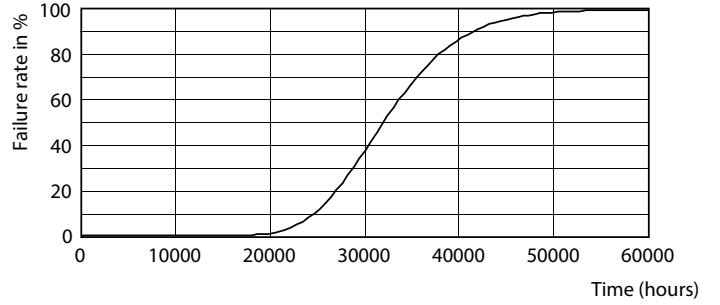
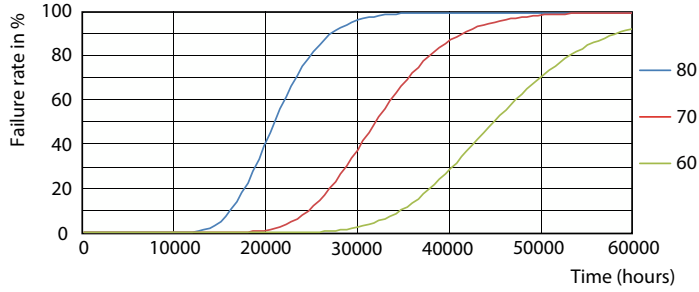
Light Distribution Diagram



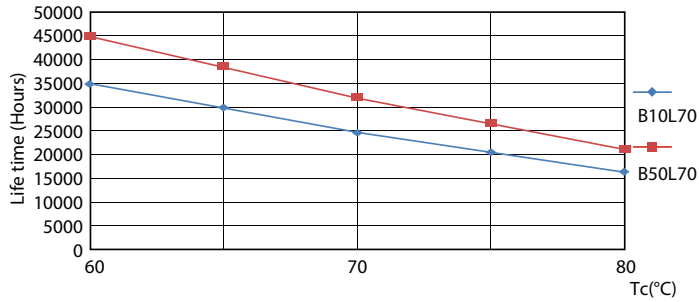
Spectral Power Distribution Colour

CorePro LED PLT 4P

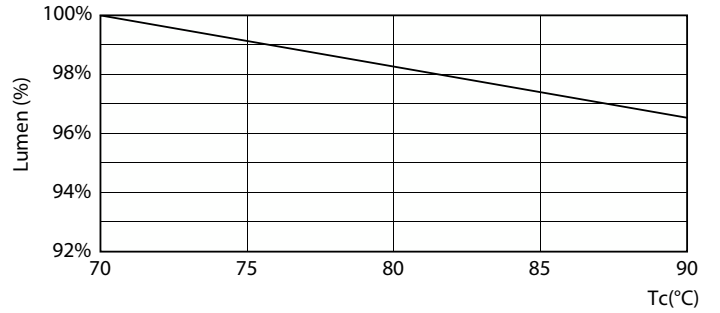
Lifetime



Life Expectancy Diagram

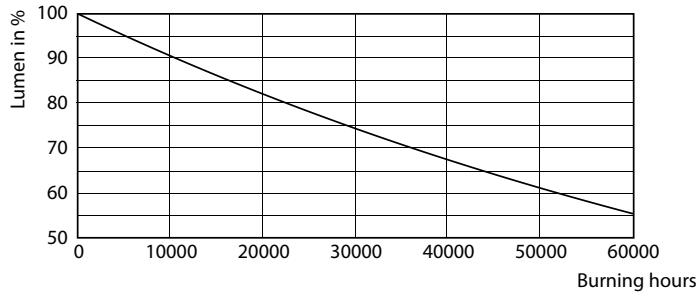


Life Expectancy Diagram - CorePro LED PLT HF 15W 840 4P GX24q-3



Life Expectancy Diagram

Lumen Maintenance Diagram



Lumen Maintenance Diagram - CorePro LED PLT HF 15W 840 4P GX24q-3

CorePro LED PLT 4P

