



CorePro LEDtube EM/ Mains T8

CorePro LEDtube 1200mm 17.6W 840 T8 AU

Philips CorePro LEDtubes are the quick and easy way to replace T8 fluorescent or other LED tubes with a fast pay back time. Not only does the Core range of LEDtubes require a low initial investment, but LED energy efficiency also delivers instant savings that you can bank on over a long and reliable lifetime. Plus, with the same lamp size and light distribution as fluorescent alternatives, you'll never know the difference. There are two ways to install these LED tubes: Rewire your existing fluorescent-based luminaires so the CorePro LEDtubes work directly on the Mains. Or simply change the fluorescent starter to an LED starter that can be used with your Electromagnetic ballasts.

Warnings and Safety

- NOTE: The overall energy efficiency and light distribution of any installation that uses these lamps will be determined by the design of the installation.
- Installation must be done according to the installation diagrams provided with the lamp or available online. Installation must be done by a certified professional.

Product data

General information		Color Designation	
Cap-Base	G13 [Medium Bi-Pin Fluorescent]	Color Designation	Cool White (CW)
EU RoHS compliant	Yes	Correlated Color Temperature (Nom)	4000 K
Nominal Lifetime (Nom)	30000 h	Luminous Efficacy (rated) (Nom)	102.00 lm/W
Switching Cycle	200000X	Color Consistency	<6
		Color Rendering Index (Nom)	80
		LLMF At End Of Nominal Lifetime (Nom)	70 %
Light technical		Operating and electrical	
Color Code	840 [CCT of 4000K]	Input Frequency	50 to 60 Hz
Beam Angle (Nom)	240 °	Power (Nom)	17.6 W
Luminous Flux (Nom)	1800 lm		

CorePro LEDtube EM/Mains T8

Lamp Current (Max)	88 mA
Lamp Current (Min)	88 mA
Starting Time (Nom)	0.5 s
Warm Up Time to 60% Light (Nom)	0.5 s
Power Factor (Nom)	0.9
Voltage (Nom)	220-240 V

Temperature

T-Ambient (Max)	45 °C
T-Ambient (Min)	-20 °C
T-Storage (Max)	65 °C
T-Storage (Min)	-40 °C
T-Case Maximum (Nom)	50 °C

Controls and dimming

Dimmable	No
----------	----

Mechanical and housing

Bulb Finish	Frosted
-------------	---------

Bulb Material	Glass
Product Length	1200 mm
Bulb Shape	Tube, double-ended

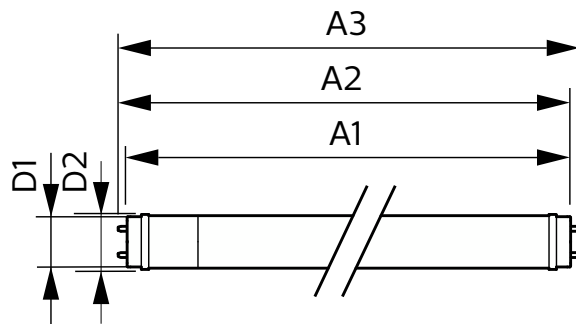
Approval and application

Energy Saving Product	Yes
Approval Marks	RoHS compliance KEMA Keur certificate

Product data

Full product code	871951444719600
Order product name	CorePro LEDtube 1200mm 17.6W 840 T8 AU
EAN/UPC - Product	8719514447196
Order code	929003520319
Numerator - Quantity Per Pack	1
Numerator - Packs per outer box	10
Material Nr. (12NC)	929003520319
Net Weight (Piece)	0.200 kg

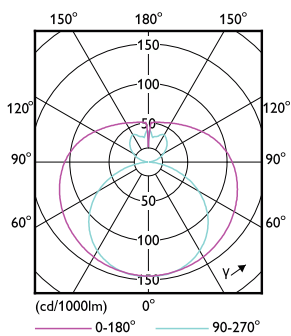
Dimensional drawing



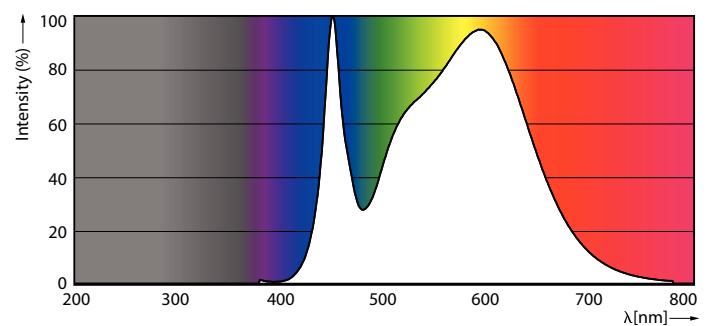
CorePro LEDtube 1200mm 17.6W 840 T8 AU

Product	D1	D2	A1	A2	A3
CorePro LEDtube 1200mm 17.6W 840 T8 AU	25.7 mm	28 mm	1198 mm	1205 mm	1212 mm

Photometric data



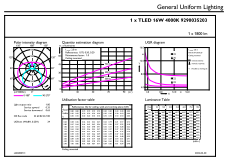
Light Distribution Diagram



Spectral Power Distribution Colour

CorePro LEDtube EM/Mains T8

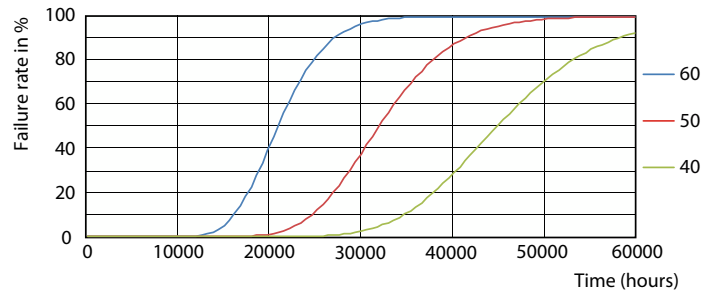
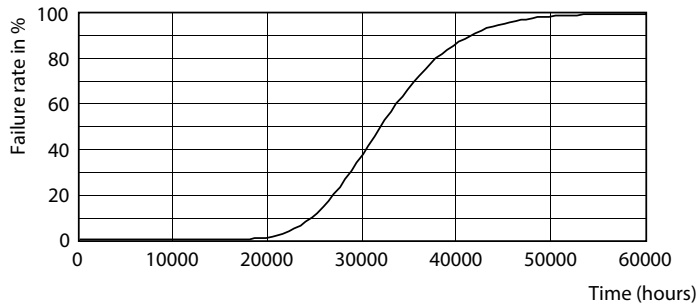
Photometric data



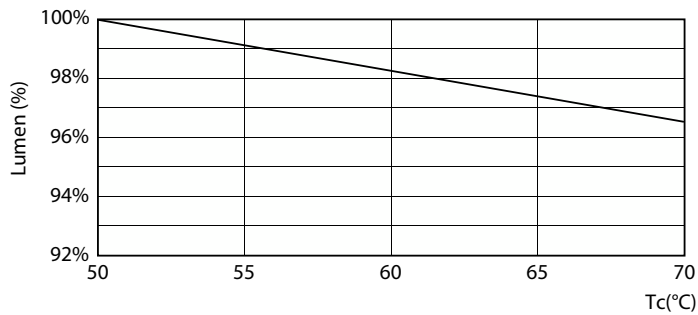
General Uniform Lighting
Page 1 of 10

General uniform lighting

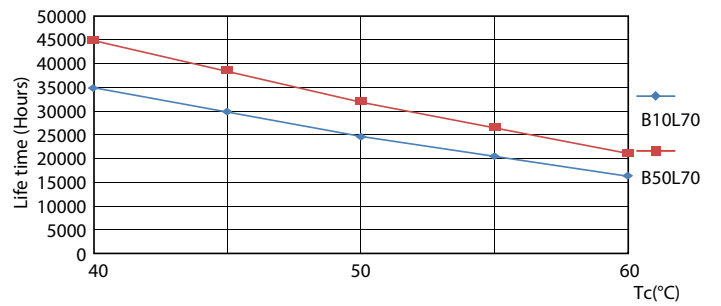
Lifetime



Life Expectancy Diagram



FailureRate

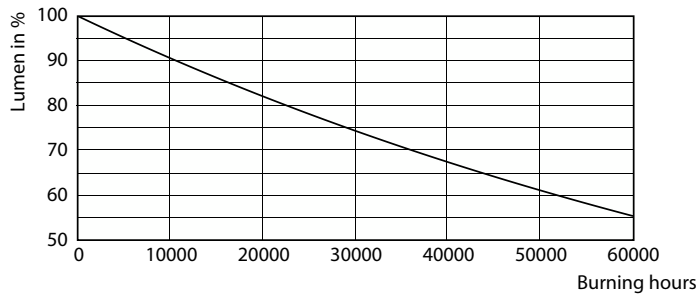


Lumen Maintenance Diagram

LEDtube_30K_4060_LifetimeVsTc-LED

CorePro LEDtube EM/Mains T8

Lifetime



Lumen Maintenance Diagram

