



UltraEfficient LED bulb

MAS LEDBulbND7.3-100WE27830 A70 FRG UE

This is the most efficient LED bulb from Signify. 210lm/W helps to concrete the company statement of sustainability. 50000 hour lifetime helps to extend the replacement cycle to reduce the waste. This is not only the high SPEC product, but also keep the light quality of Philips brand

Product data

General information	
Cap-Base	E27 [E27]
EU RoHS compliant	Yes
Nominal Lifetime (Nom)	50000 h
Switching Cycle	50000X
Flux measurement reference	Sphere

Light technical	
Color Code	830 [CCT of 3000K]
Luminous Flux (Nom)	1535 lm
Color Designation	White (WH)
Correlated Color Temperature (Nom)	3000 K
Luminous Efficacy (rated) (Nom)	210.00 lm/W
Color Consistency	<6
Color Rendering Index (Nom)	80
LLMF At End Of Nominal Lifetime (Nom)	70 %

Operating and electrical	
Input Frequency	50 to 60 Hz
Power (Nom)	7.3 W

Lamp Current (Nom)	70 mA
Wattage Equivalent	100 W
Starting Time (Nom)	0.5 s
Warm Up Time to 60% Light (Nom)	0.5 s
Power Factor (Nom)	0.4
Voltage (Nom)	220-240 V

Temperature	
T-Case Maximum (Nom)	70 °C

Controls and dimming	
Dimmable	No

Mechanical and housing	
Bulb Finish	Frosted
Bulb Shape	A70 [A 70mm]

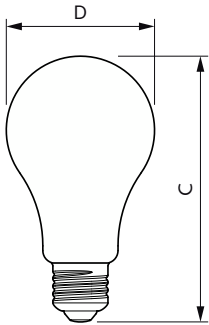
Approval and application	
Energy Efficiency Class	A
Energy Consumption kWh/1000 h	8 kWh

UltraEfficient LED bulb

EPREL Registration Number	1099144
Product data	
Full product code	871951443583400
Order product name	MAS LEDBulbND7.3-100WE27830 A70 FRG UE
EAN/UPC - Product	8719514435834

Order code	929003480202
Numerator - Quantity Per Pack	1
Numerator - Packs per outer box	10
Material Nr. (12NC)	929003480202
Net Weight (Piece)	0.050 kg

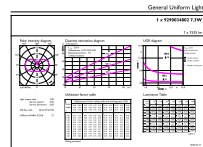
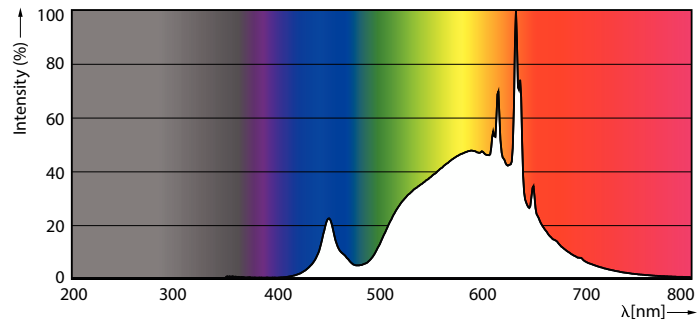
Dimensional drawing



MAS LEDBulbND7.3-100WE27830 A70 FRG UE

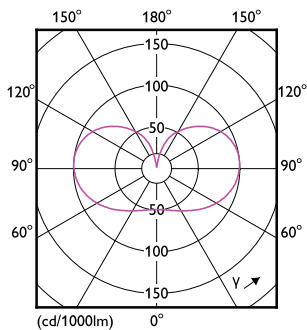
Product	D	C
MAS LEDBulbND7.3-100WE27830 A70 FRG UE	70 mm	127 mm

Photometric data



General uniform lighting

Spectral Power Distribution Colour

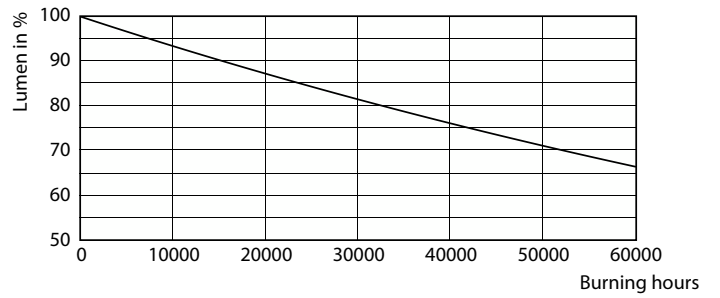
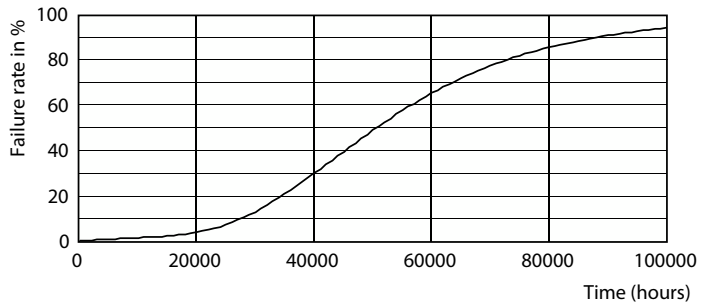


Light Distribution Diagram

General uniform lighting

UltraEfficient LED bulb

Lifetime



50K

50K

