



T8

10.5T8/COR/48-850/IF16/G/DIM/BAA 25/1

Our TLEDs are available in InstantFit (Type A / Type C) or MainsFit (Ballast bypass / Type B) versions. The InstantFit lamps work on a broad variety of ballasts and LED drivers. Only InstantFit has over 15,000 lamp & ballast combinations delivering even light output, energy savings and a long lifetime. Our MainsFit products feature a double-ended design, simplifying installation while a proprietary safety circuit minimizes a shock risk. Lamp sizes range from 2-foot to 8-foot and U-bend with a variety of lumen outputs.

Product data

General information	
Cap-Base	G13 [Medium Bi-Pin Fluorescent]
EU RoHS compliant	Yes
Nominal Lifetime (Nom)	50000 h
Switching Cycle	50000X
Light technical	
Color Code	850 [CCT of 5000K]
Beam Angle (Nom)	240 °
Luminous Flux (Nom)	1650 lm
Color Designation	Daylight
Correlated Color Temperature (Nom)	5000 K
Luminous Efficacy (rated) (Nom)	157.00 lm/W
Color Consistency	<5
Color Rendering Index (Nom)	80
LLMF At End Of Nominal Lifetime (Nom)	70 %
Operating and electrical	
Input Frequency	20K to 120K Hz
Power (Nom)	10.5 W

Lamp Current (Max)	350 mA
Lamp Current (Min)	90 mA
Wattage Equivalent	32-30-28-25 W
Starting Time (Nom)	0.5 s
Warm Up Time to 60% Light (Nom)	0.5 s
UL Type	TLED_Type A; UL listed HF
Power Factor (Nom)	0.9
Voltage (Nom)	120-277, 347 V
Temperature	
T-Ambient (Max)	45 °C
T-Ambient (Min)	-20 °C
T-Storage (Max)	65 °C
T-Storage (Min)	-40 °C
T-Case Maximum (Nom)	50 °C
Controls and dimming	
Dimmable	Only with specific dimmers

T8

Mechanical and housing

Bulb Finish	Frosted
Bulb Material	Glass
Product Length	1200 mm
Bulb Shape	Tube, double-ended

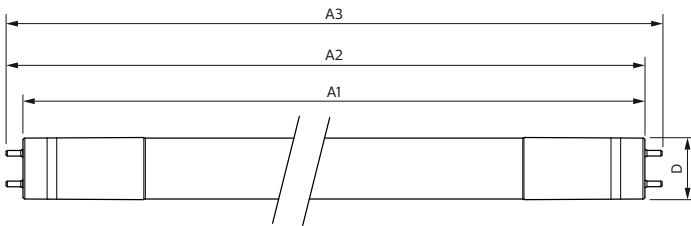
Approval and application

Energy Saving Product	Yes
Approval Marks	RoHS compliance UL certificate DLC compliance

Product data

Order product name	10.5T8/COR/48-850/IF16/G/DIM/BAA 25/1
EAN/UPC - Product	046677576790
Order code	929003144704
Numerator - Quantity Per Pack	1
Numerator - Packs per outer box	25
Material Nr. (12NC)	929003144704
Net Weight (Piece)	0.206 kg
Model Number	9290031447

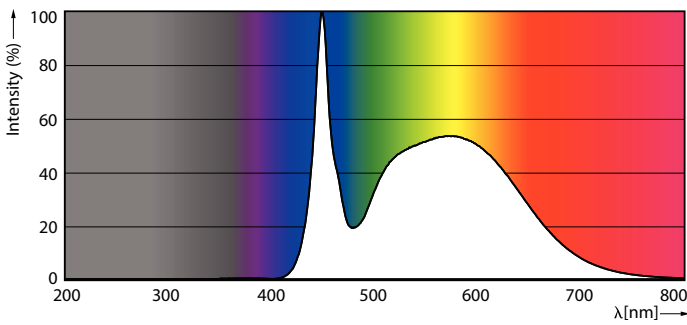
Dimensional drawing



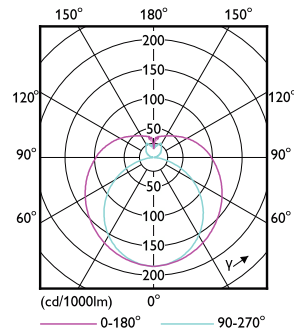
Product	D1	D2	A1	A2	A3
10.5T8/COR/48-850/IF16/G/DIM/BAA 25/1	25.7 mm	25.7 mm	1198.2 mm	1205.3 mm	1212.4 mm

10.5T8/COR/48-850/IF16/G/DIM/BAA 25/1

Photometric data

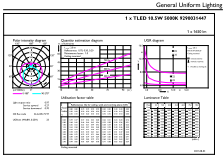


LEDtube COR NAM 10,5W G13 1650lm 850-POC



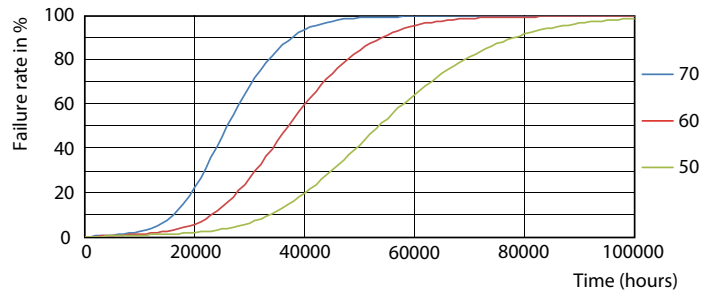
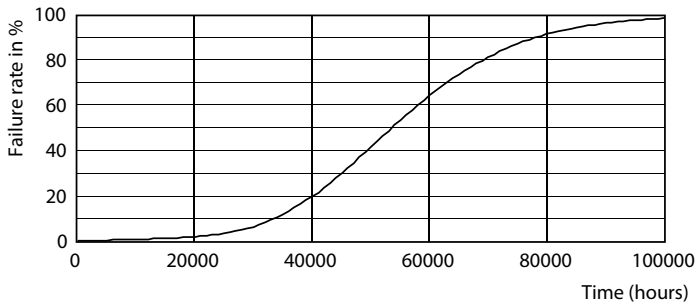
LEDtube COR NAM 10,5W G13 1550lm-LDD

Photometric data

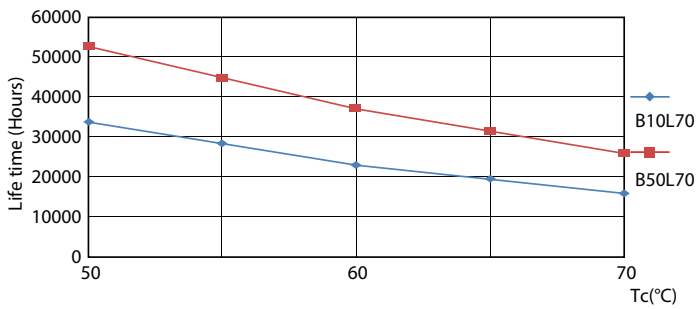


LEDtube COR NAM 10,5W G13 1650lm 850-GUL

Lifetime

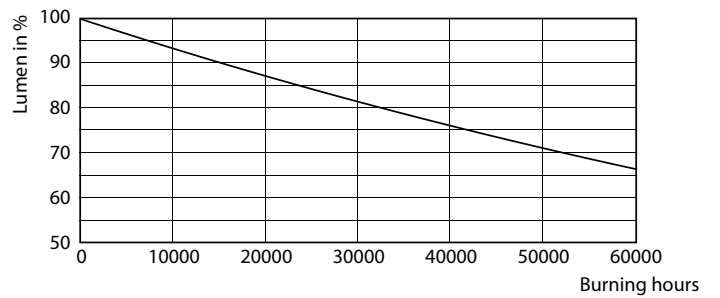


Life Expectancy Diagram



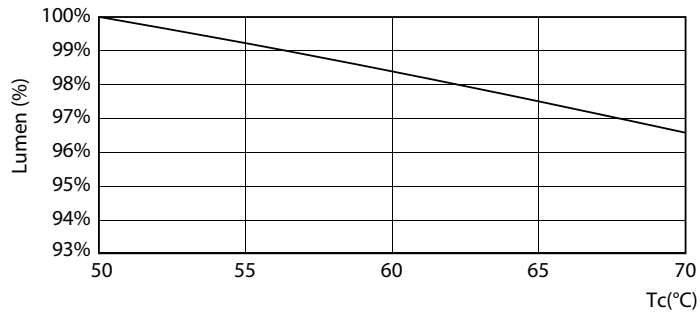
LEDtube 50K 5070 LifetimeVsTc-LED

LEDtube 50K 5070 FailureRate-LED



Lumen Maintenance Diagram

Lifetime



LEDtube COR NAM 10,5W 50K LumenVsTc-LMP

