

T5

24T5HO/COR/46-840/IF35/G/DIM 25/1

Philips T5 LED tubes offer an affordable, energy saving retrofit solution. The T5 lamps have been engineered to withstand the test of time with a 50,000-hour lifetime and a limited 5-year warranty to back it up. The lighting performance effectively replaces conventional fluorescent T5 HO or T5 HE lamps. Available in either InstantFit (Type A or Type C) or MainsFit (Type B / Ballast bypass), Philips T5 TLEDs provide a variety of options for any application.

Product data

General information	
Cap-Base	G5 [G5]
EU RoHS compliant	Yes
Nominal Lifetime (Nom)	50000 h
Switching Cycle	50000X
Light technical	
Color Code	840 [CCT of 4000K]
Beam Angle (Nom)	200 °
Luminous Flux (Nom)	3500 lm
Color Designation	Cool White (CW)
Correlated Color Temperature (Nom)	4000 K
Luminous Efficacy (rated) (Nom)	145.00 lm/W
Color Consistency	<6
Color Rendering Index (Nom)	80
LLMF At End Of Nominal Lifetime (Nom)	70 %
Operating and electrical	
Input Frequency	50 to 60 Hz
Power (Nom)	24 W
Lamp Current (Max)	1200 mA

Lamp Current (Min)	30 mA
Starting Time (Nom)	0.5 s
Warm Up Time to 60% Light (Nom)	0.5 s
UL Type	TLED_Type A; UL listed HF
Power Factor (Nom)	0.9
Voltage (Nom)	120-277, 347 V
Temperature	
T-Ambient (Max)	45 °C
T-Ambient (Min)	-20 °C
T-Storage (Max)	65 °C
T-Storage (Min)	-40 °C
T-Case Maximum (Nom)	70 °C
Controls and dimming	
Dimmable	Only with specific dimmers
Mechanical and housing	
Bulb Finish	Frosted
Bulb Material	Glass
Product Length	1200 mm

T5

Bulb Shape	Tube, double-ended
------------	--------------------

Approval and application

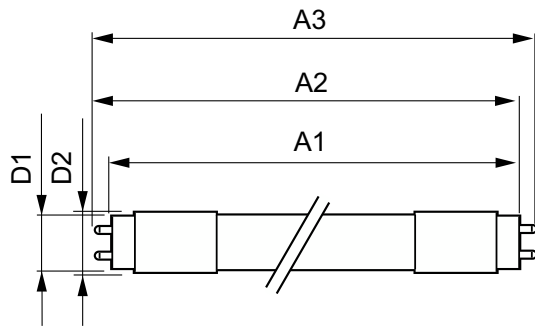
Energy Saving Product	Yes
Approval Marks	RoHS compliance UL certificate DLC compliance

Product data

Order product name	24T5HO/COR/46-840/IF35/G/DIM 25/1
--------------------	-----------------------------------

EAN/UPC - Product	046677576738
Order code	929003134104
Numerator - Quantity Per Pack	1
Numerator - Packs per outer box	25
Material Nr. (12NC)	929003134104
Net Weight (Piece)	0.151 kg

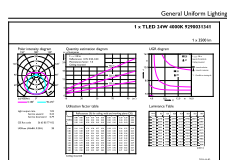
Dimensional drawing



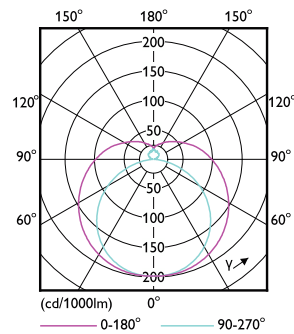
24T5HO/COR/46-840/IF35/G/DIM 25/1

Product	D1	D2	A1	A2	A3
24T5HO/COR/46-840/IF35/G/DIM 25/1	15.3 mm	18.4 mm	1147.8 mm	1154.9 mm	1162 mm

Photometric data

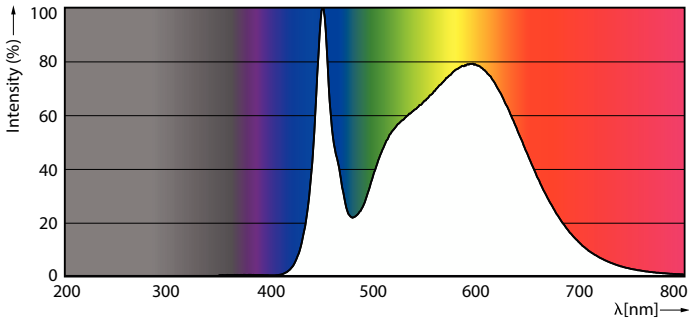


LEDtube COR NAM3 24W G5 3500lm 840-GUL



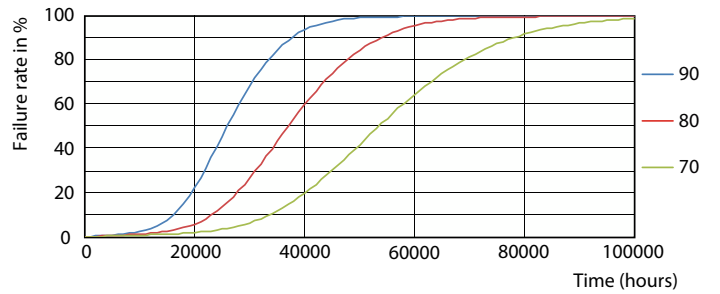
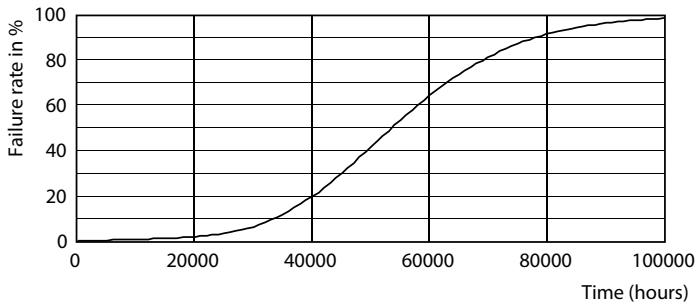
LEDtube COR NAM3 24W G5 3500lm 1-LDD

Photometric data

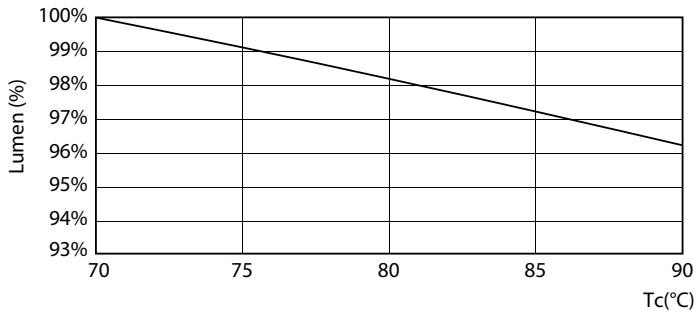


LEDtube COR NAM3 24W G5 3500lm 840-POC

Lifetime

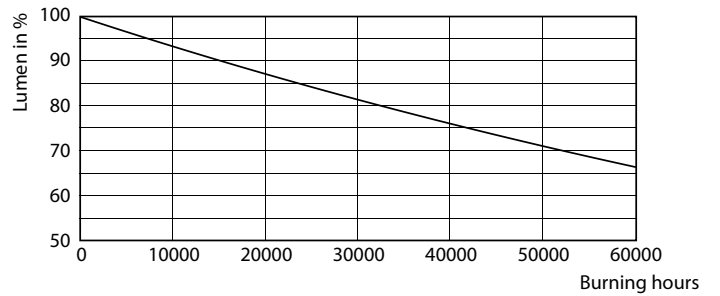


Life Expectancy Diagram



LEDtube COR NAM3 24W 50K LumenVsTc-LMP

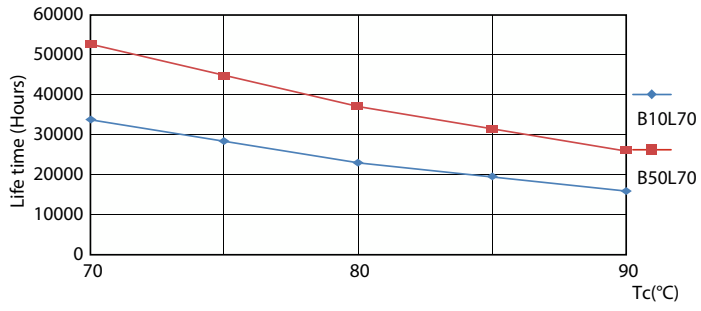
FailureRate



Lumen Maintenance Diagram

T5

Lifetime



LifetimeVsTc

