



T5

10T5HE/COR/34-850/MF14/G 25/1

Philips T5 LED tubes offer an affordable, energy saving retrofit solution. The T5 lamps have been engineered to withstand the test of time with a 50,000-hour lifetime and a limited 5-year warranty to back it up. The lighting performance effectively replaces conventional fluorescent T5 HO or T5 HE lamps. Available in either InstantFit (Type A or Type C) or MainsFit (Type B / Ballast bypass), Philips T5 TLEDs provide a variety of options for any application.

Product data

General information	
Cap-Base	G5 [G5]
EU RoHS compliant	Yes
Nominal Lifetime (Nom)	50000 h
Switching Cycle	50000X
Light technical	
Color Code	850 [CCT of 5000K]
Beam Angle (Nom)	200 °
Luminous Flux (Nom)	1400 lm
Color Designation	Daylight
Correlated Color Temperature (Nom)	5000 K
Luminous Efficacy (rated) (Nom)	140.00 lm/W
Color Consistency	<5
Color Rendering Index (Nom)	80
LLMF At End Of Nominal Lifetime (Nom)	70 %
Operating and electrical	
Input Frequency	50 to 60 Hz
Power (Nom)	10 W
Lamp Current (Max)	105 mA

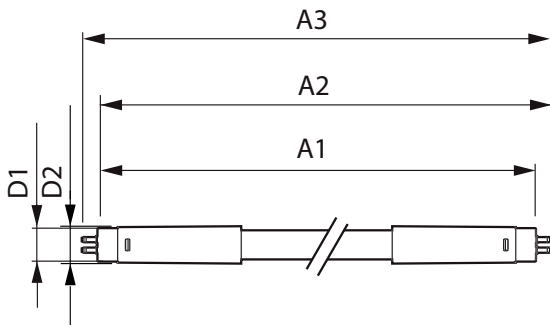
Lamp Current (Min)	40 mA
Starting Time (Nom)	0.5 s
Warm Up Time to 60% Light (Nom)	0.5 s
UL Type	TLED_Type B; UL classified double end
Power Factor (Nom)	0.9
Voltage (Nom)	120-277 V
Temperature	
T-Ambient (Max)	45 °C
T-Ambient (Min)	-20 °C
T-Storage (Max)	65 °C
T-Storage (Min)	-40 °C
T-Case Maximum (Nom)	70 °C
Controls and dimming	
Dimmable	Limited
Mechanical and housing	
Bulb Finish	Frosted
Bulb Material	Glass
Product Length	900 mm

T5

Bulb Shape	Tube, double-ended
Approval and application	
Energy Saving Product	Yes
Approval Marks	RoHS compliance UL certificate
Product data	
Order product name	10T5HE/COR/34-850/MF14/G 25/1
EAN/UPC - Product	046677576196

Order code	929003123204
Numerator - Quantity Per Pack	1
Numerator - Packs per outer box	25
Material Nr. (12NC)	929003123204
Net Weight (Piece)	0.125 kg
Model Number	9290031232

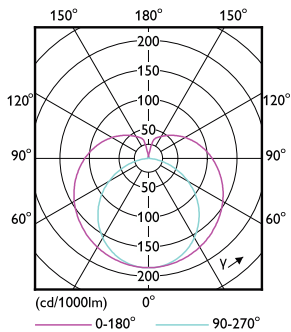
Dimensional drawing



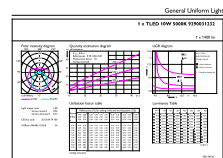
10T5HE/COR/34-850/MF14/G 25/1

Product	D1	D2	A1	A2	A3
10T5HE/COR/34-850/ MF14/G 25/1	15.3 mm	18.2 mm	849 mm	854.9 mm	863.2 mm

Photometric data

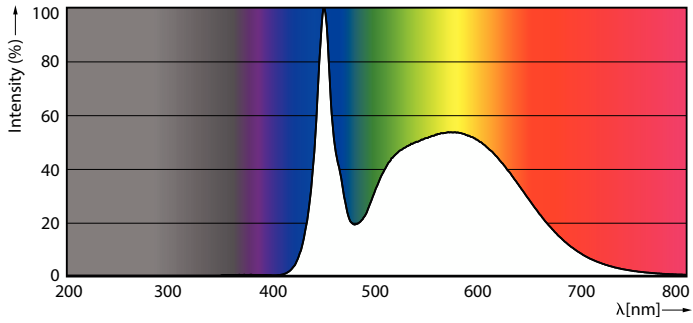


LEDtube COR NAM1 8W G5 1000lm-LDD



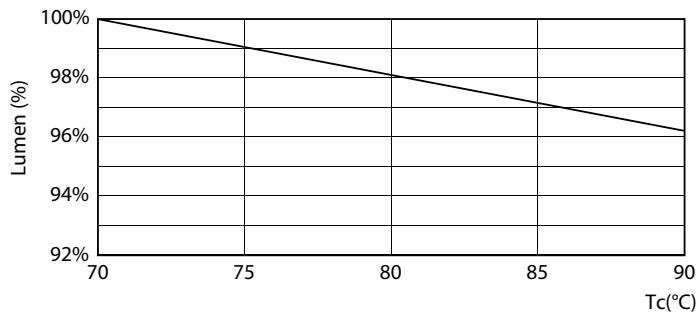
LEDtube COR NAM1 10W G5 1400lm 850-GUL

Photometric data

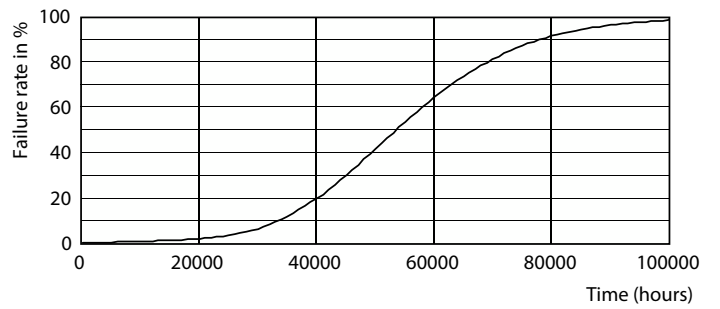


LEDtube COR NAM1 8W G5 1050lm 850-POC

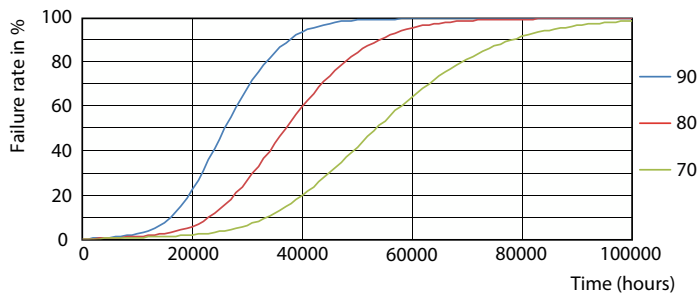
Lifetime



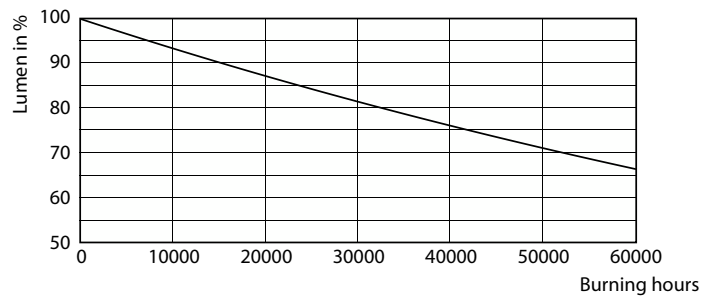
LEDtube COR NAM1 8W 50K LumenVsTc-LMP



Life Expectancy Diagram



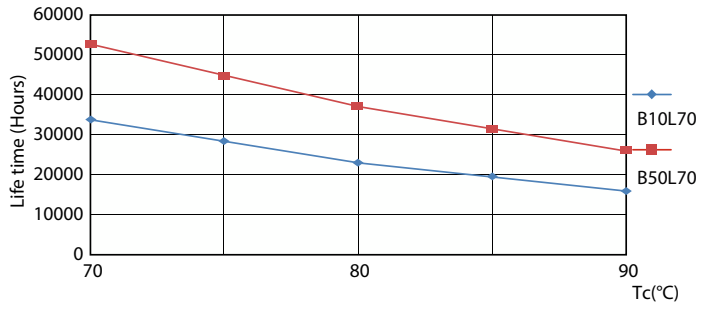
FailureRate



Lumen Maintenance Diagram

T5

Lifetime



LifetimeVsTc

