

T5

10T5HE/COR/34-835/MF13/G 25/1

Philips T5 LED tubes offer an affordable, energy saving retrofit solution. The T5 lamps have been engineered to withstand the test of time with a 50,000-hour lifetime and a limited 5-year warranty to back it up. The lighting performance effectively replaces conventional fluorescent T5 HO or T5 HE lamps. Available in either InstantFit (Type A or Type C) or MainsFit (Type B / Ballast bypass), Philips T5 TLEDs provide a variety of options for any application.

Product data

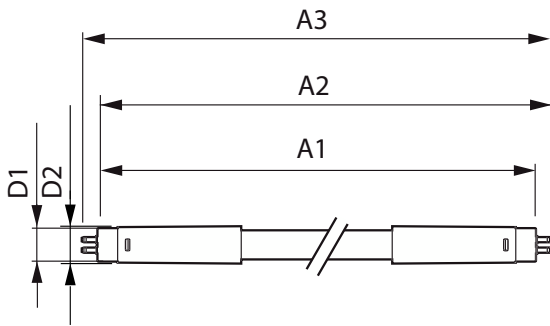
General information		Lamp Current (Min)	
Cap-Base	G5 [G5]	40 mA	
EU RoHS compliant	Yes	Starting Time (Nom)	
Nominal Lifetime (Nom)	50000 h	0.5 s	
Switching Cycle	50000X	Warm Up Time to 60% Light (Nom)	
		0.5 s	
		UL Type	
		TLED_Type B; UL classified double end	
		Power Factor (Nom)	
		0.9	
		Voltage (Nom)	
		120-277 V	
Light technical		Temperature	
Color Code	835 [CCT of 3500K]	T-Ambient (Max)	
Beam Angle (Nom)	200 °	45 °C	
Luminous Flux (Nom)	1300 lm	T-Ambient (Min)	
Color Designation	White (WH)	-20 °C	
Correlated Color Temperature (Nom)	3500 K	T-Storage (Max)	
Luminous Efficacy (rated) (Nom)	130.00 lm/W	65 °C	
Color Consistency	<6	T-Storage (Min)	
Color Rendering Index (Nom)	80	-40 °C	
LLMF At End Of Nominal Lifetime (Nom)	70 %	T-Case Maximum (Nom)	
		70 °C	
Operating and electrical		Controls and dimming	
Input Frequency	50 to 60 Hz	Dimmable	
Power (Nom)	10 W	Limited	
Lamp Current (Max)	105 mA		
Mechanical and housing			
Bulb Finish	Frosted		
Bulb Material	Glass		
Product Length	900 mm		

T5

Bulb Shape	Tube, double-ended
Approval and application	
Energy Saving Product	Yes
Approval Marks	RoHS compliance UL certificate
Product data	
Order product name	10T5HE/COR/34-835/MF13/G 25/1
EAN/UPC - Product	046677576172

Order code	929003123004
Numerator - Quantity Per Pack	1
Numerator - Packs per outer box	25
Material Nr. (12NC)	929003123004
Net Weight (Piece)	0.125 kg
Model Number	9290031230

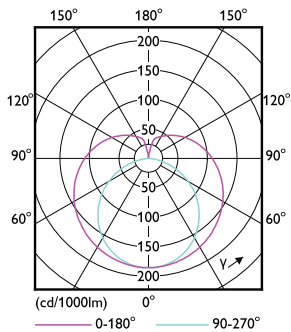
Dimensional drawing



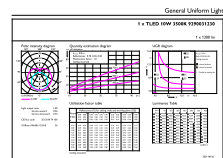
10T5HE/COR/34-835/MF13/G 25/1

Product	D1	D2	A1	A2	A3
10T5HE/COR/34-835/ MF13/G 25/1	15.3 mm	18.2 mm	849 mm	854.9 mm	863.2 mm

Photometric data

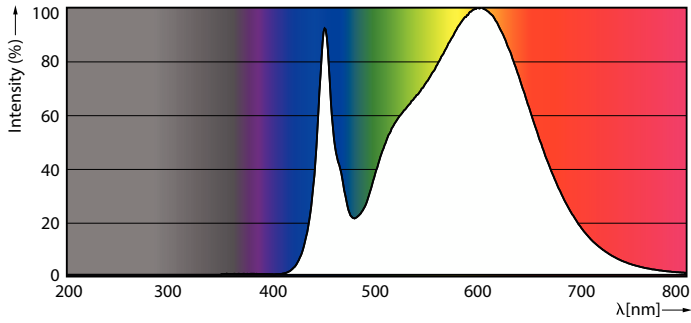


LEDtube COR NAM1 8W G5 1000lm-LDD



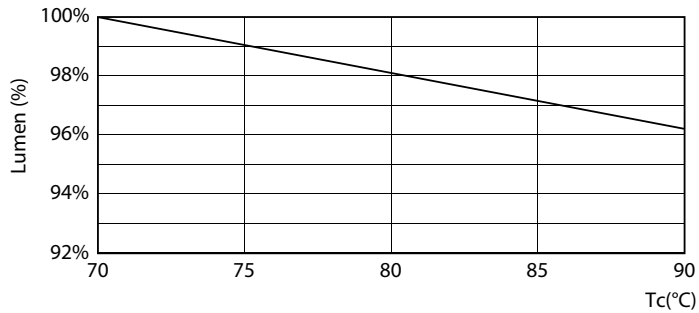
LEDtube COR NAM1 10W G5 1300lm 835-GUL

Photometric data

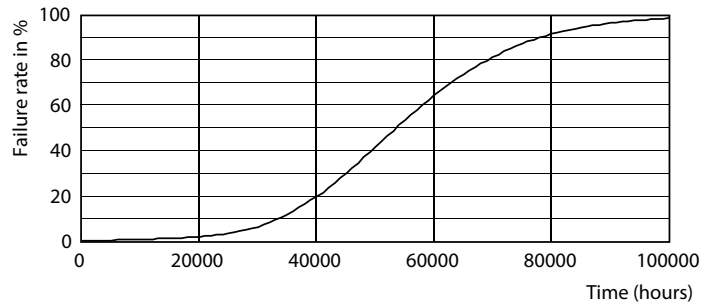


LEDtube COR NAM1 8W G5 1000lm 835-POC

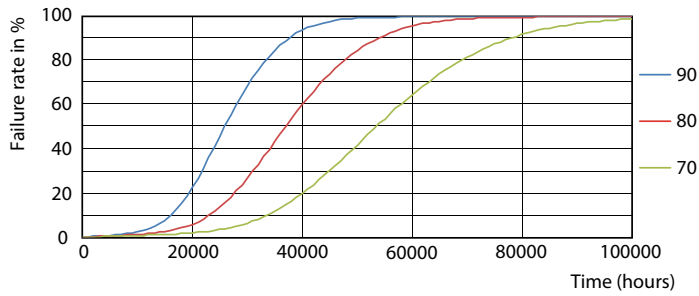
Lifetime



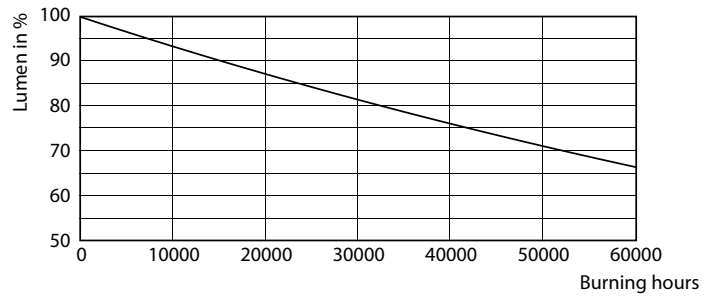
LEDtube COR NAM1 8W 50K LumenVsTc-LMP



Life Expectancy Diagram



FailureRate



Lumen Maintenance Diagram

T5

Lifetime



LifetimeVsTc

