



MASTER Value LEDtube T8

MASTER LEDtube VLE 1200mm HO 14W865 T8 MY

A high performance LED solution, the professional MASTER Value LED tube is ideal for replacing T8 fluorescent lamps using EM ballast or installing directly on the mains. This product provides a uniform lighting effect for use in all general lighting, as well as instant energy efficiency, making for an environmentally friendly solution.

Product data

General information	
Cap-Base	G13 [Medium Bi-Pin Fluorescent]
EU RoHS compliant	Yes
Nominal Lifetime (Nom)	50000 h
Switching Cycle	200000X
Light technical	
Color Code	865 [CCT of 6500K]
Beam Angle (Nom)	240 °
Luminous Flux (Nom)	2100 lm
Color Designation	Cool Daylight
Correlated Color Temperature (Nom)	6500 K
Luminous Efficacy (rated) (Nom)	150.00 lm/W
Color Consistency	<6
Color Rendering Index (Nom)	83
LLMF At End Of Nominal Lifetime (Nom)	70 %
Operating and electrical	
Input Frequency	50 to 60 Hz

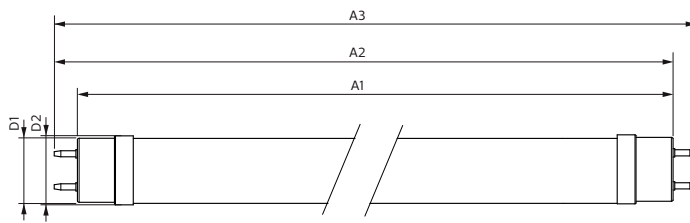
Power (Nom)	14 W
Lamp Current (Nom)	66 mA
Starting Time (Nom)	0.5 s
Warm Up Time to 60% Light (Nom)	0.5 s
Power Factor (Nom)	0.9
Voltage (Nom)	220-240 V
Temperature	
T-Ambient (Max)	45 °C
T-Ambient (Min)	-20 °C
T-Storage (Max)	65 °C
T-Storage (Min)	-40 °C
T-Case Maximum (Nom)	55 °C
Controls and dimming	
Dimmable	No
Mechanical and housing	
Bulb Finish	Frosted

MASTER Value LEDtube T8

Bulb Material	Glass
Product Length	1200 mm
Bulb Shape	Tube, double-ended
Approval and application	
Energy Saving Product	Yes
Approval Marks	RoHS compliance KEMA Keur certificate
Product data	
Full product code	871951435561300

Order product name	MASTER LEDtube VLE 1200mm HO 14W865 T8 MY
EAN/UPC - Product	8719514355613
Order code	929003070337
Numerator - Quantity Per Pack	1
Numerator - Packs per outer box	10
Material Nr. (12NC)	929003070337
Net Weight (Piece)	0.215 kg

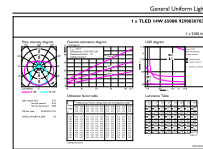
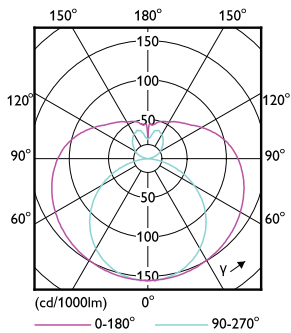
Dimensional drawing



Product	D1	D2	A1	A2	A3
MASTER LEDtube VLE 1200mm HO 14W865 T8 MY	25.8 mm	28 mm	1198.2 mm	1205.3 mm	1212.4 mm

MASTER LEDtube VLE 1200mm HO 14W865 T8 MY

Photometric data

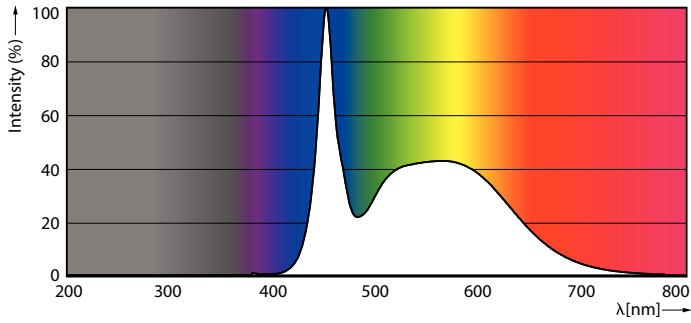


LEDtube MAS GMGC 14W G13 2000lm-LDD

LEDtube MAS GMGC 14W G13 2100lm 865-GUL

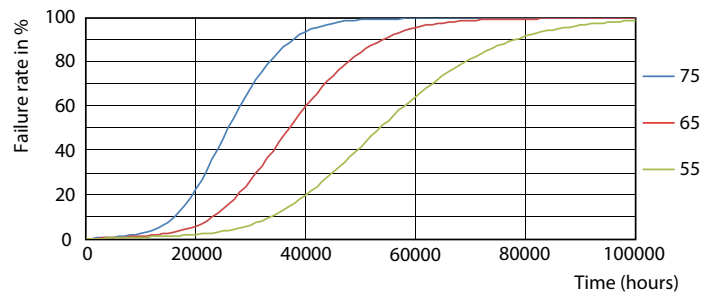
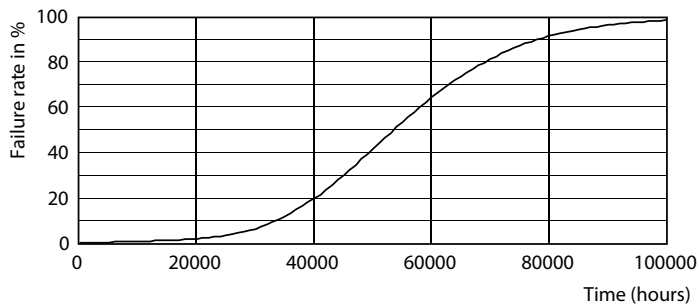
MASTER Value LEDtube T8

Photometric data

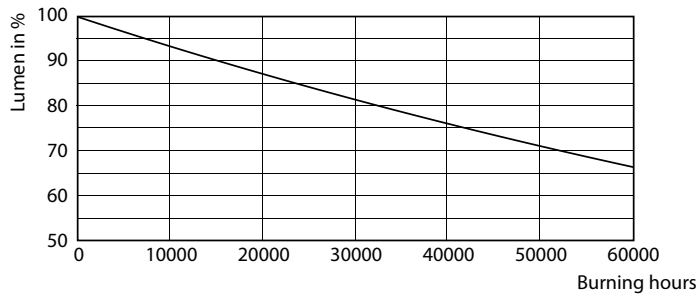


LEDtube MAS GMGC 14W G13 2100lm 865-POC

Lifetime

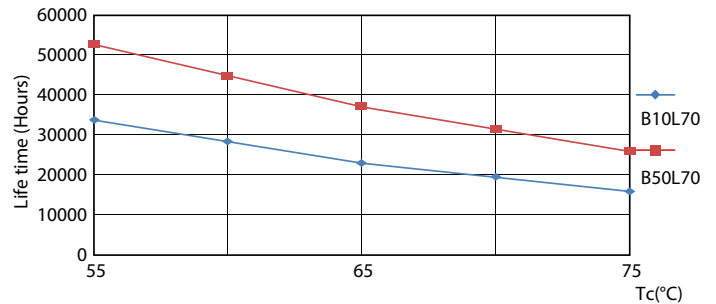


Life Expectancy Diagram



Lumen Maintenance Diagram

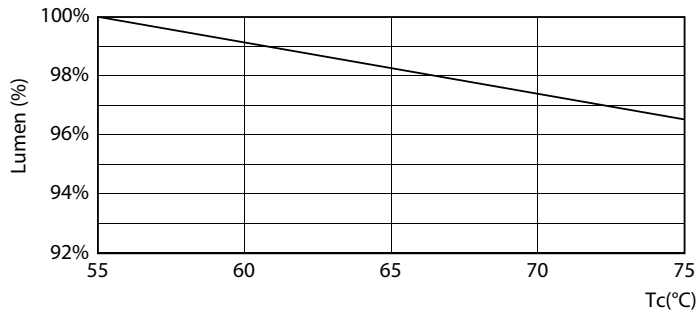
LEDtube 50K 5575 FailureRate-LED



LEDtube 50K 5575 LifetimeVsTc-LED

MASTER Value LEDtube T8

Lifetime



LEDtube MAS GMGC 8W 50K LumenVsTc-LMP

