

MASTER Value LEDtube T8

MASTER LEDtube VLE 600mm HO 8W 840 T8

A high-performance LED solution, the professional MASTER Value LED tube is ideal for replacing T8 fluorescent lamps using EM ballast or installing directly on the mains. This product provides an optimal combination of value and performance – for use in all general lighting, office, industry, retail, and hospitality applications. The unique design of this LED T8 tube light offers wide compatibility, safety and fast installation, as well as instant energy savings.

Product data

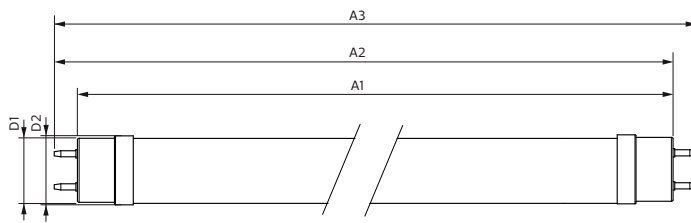
General information		Power (Nom)	
Cap-Base	G13 [Medium Bi-Pin Fluorescent]		8 W
EU RoHS compliant	Yes	Lamp Current (Nom)	39 mA
Nominal Lifetime (Nom)	50000 h	Starting Time (Nom)	0.5 s
Switching Cycle	200000X	Warm Up Time to 60% Light (Nom)	0.5 s
		Power Factor (Nom)	0.9
		Voltage (Nom)	220-240 V
Light technical		Temperature	
Color Code	840 [CCT of 4000K]	T-Ambient (Max)	45 °C
Beam Angle (Nom)	240 °	T-Ambient (Min)	-20 °C
Luminous Flux (Nom)	1050 lm	T-Storage (Max)	65 °C
Color Designation	Cool White (CW)	T-Storage (Min)	-40 °C
Correlated Color Temperature (Nom)	4000 K	T-Case Maximum (Nom)	55 °C
Luminous Efficacy (rated) (Nom)	131.00 lm/W		
Color Consistency	<6	Controls and dimming	
Color Rendering Index (Nom)	83	Dimmable	No
LLMF At End Of Nominal Lifetime (Nom)	70 %		
Operating and electrical		Mechanical and housing	
Input Frequency	50 to 60 Hz	Bulb Finish	Frosted

MASTER Value LEDtube T8

Bulb Material	Glass
Product Length	600 mm
Bulb Shape	Tube, double-ended
Approval and application	
Energy Saving Product	Yes
Approval Marks	RoHS compliance KEMA Keur certificate
Product data	
Full product code	87195143507000

Order product name	MASTER LEDtube VLE 600mm HO 8W 840 T8
EAN/UPC - Product	8719514350700
Order code	929003069908
Numerator - Quantity Per Pack	1
Numerator - Packs per outer box	10
Material Nr. (12NC)	929003069908
Net Weight (Piece)	0.120 kg

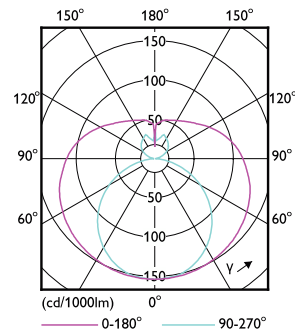
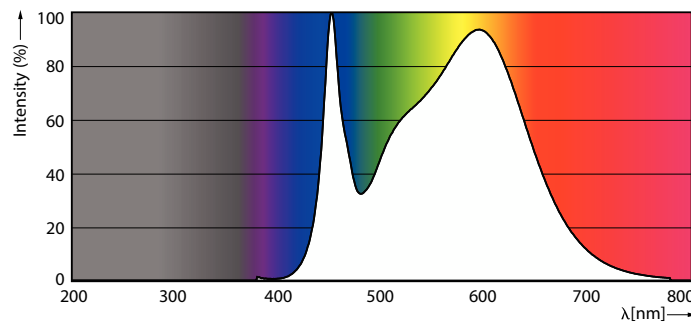
Dimensional drawing



Product	D1	D2	A1	A2	A3
MASTER LEDtube VLE 600mm HO 8W 840 T8	25.8 mm	28 mm	588.5 mm	595.5 mm	602.5 mm

MASTER LEDtube VLE 600mm HO 8W 840 T8

Photometric data

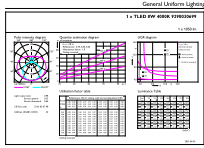


LEDtube MAS GMGC 8W G13 1050lm 840-POC

LEDtube MAS GMGC 8W G13 1050lm-LDD

MASTER Value LEDtube T8

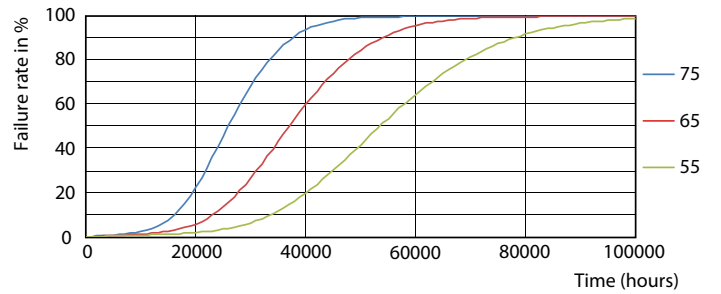
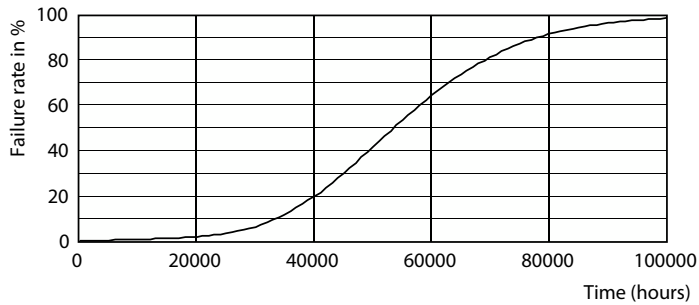
Photometric data



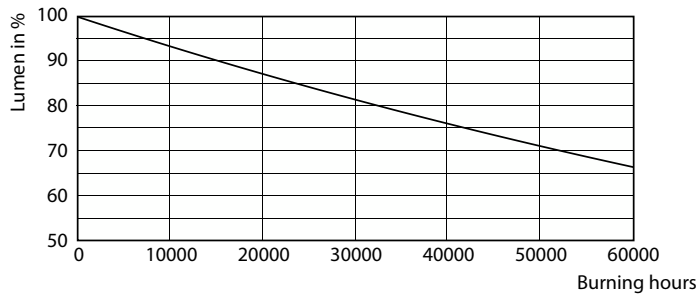
Technical Parameters 43 Page 10

LEDtube MAS GMGC 8W G13 1050lm 840-GUL

Lifetime

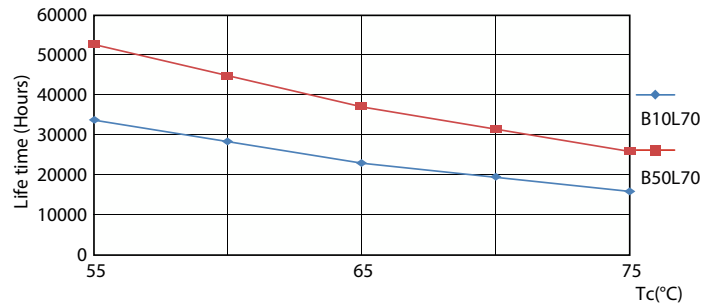


Life Expectancy Diagram



Lumen Maintenance Diagram

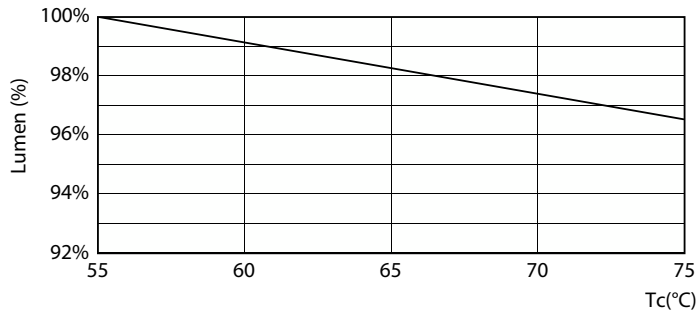
LEDtube 50K 5575 FailureRate-LED



LEDtube 50K 5575 LifetimeVsTc-LED

MASTER Value LEDtube T8

Lifetime



LEDtube MAS GMGC 8W 50K LumenVsTc-LMP

