



T8

14T8/LED/48-5CCT/MF18/G/DS 1/10

Our TLEDs are available in InstantFit (Type A / Type C) or MainsFit (Ballast bypass / Type B) versions. The InstantFit lamps work on a broad variety of ballasts and LED drivers. Only InstantFit has over 15,000 lamp & ballast combinations delivering even light output, energy savings and a long lifetime. Our MainsFit products feature a double-ended design, simplifying installation while a proprietary safety circuit minimizes a shock risk. Lamp sizes range from 2-foot to 8-foot and U-bend with a variety of lumen outputs.

Product data

General information	
Cap-Base	G13 [Medium Bi-Pin Fluorescent]
EU RoHS compliant	Yes
Nominal Lifetime (Nom)	50000 h
Switching Cycle	50000X
Light technical	
Color Code	3000K/3500K/4000K/5000K/6500K
Beam Angle (Nom)	240 °
Luminous Flux (Nom)	1800 lm
Color Designation	3000K/3500K/4000K/5000K/6500K
Correlated Color Temperature (Nom)	3000 3500 4000 5000 6500 K
Luminous Efficacy (rated) (Nom)	128.00 lm/W
Color Consistency	<6
Color Rendering Index (Nom)	80
LLMF At End Of Nominal Lifetime (Nom)	70 %
Operating and electrical	
Input Frequency	50 to 60 Hz
Power (Nom)	14 W

Lamp Current (Max)	120 mA
Lamp Current (Min)	56 mA
Starting Time (Nom)	0.5 s
Warm Up Time to 60% Light (Nom)	0.5 s
UL Type	Type B - bypass the ballast
Power Factor (Nom)	0.9
Voltage (Nom)	120-277 V
Temperature	
T-Ambient (Max)	45 °C
T-Ambient (Min)	-20 °C
T-Storage (Max)	65 °C
T-Storage (Min)	-40 °C
T-Case Maximum (Nom)	70 °C
Controls and dimming	
Dimmable	No
Mechanical and housing	
Bulb Finish	Frosted

T8

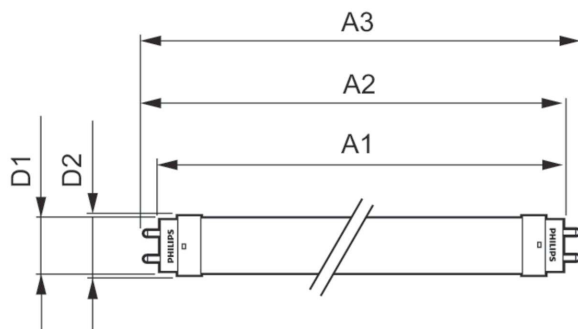
Bulb Material	Glass
Product Length	1200 mm
Bulb Shape	Tube, double-ended
Approval and application	
Energy Saving Product	Yes
Approval Marks	RoHS compliance UL certificate DLC compliance
Energy Consumption kWh/1000 h	- kWh

Product data

Order product name	14T8/LED/48-5CCT/MF18/G/DS 1/10
--------------------	---------------------------------

EAN/UPC - Product	50046677568516
Order code	929003051333
Numerator - Quantity Per Pack	1
Numerator - Packs per outer box	1
Material Nr. (12NC)	929003051333
Net Weight (Piece)	0.215 kg
Model Number	9290030513

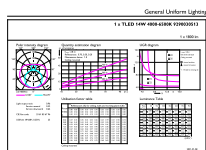
Dimensional drawing



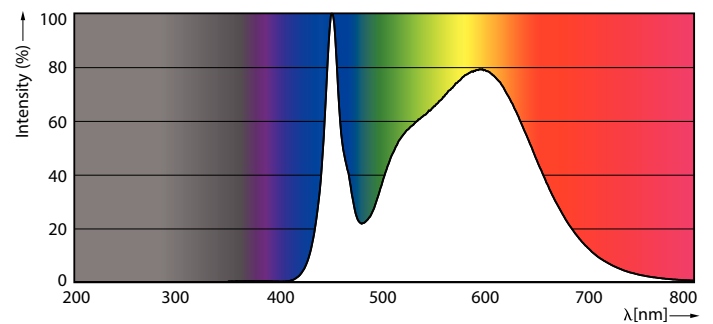
14T8/LED/48-5CCT/MF18/G/DS 1/10

Product	D1	D2	A1	A2	A3
14T8/LED/48-5CCT/ MF18/G/DS 1/10	25.7 mm	28 mm	1198.2 mm	1205.3 mm	1212.4 mm

Photometric data

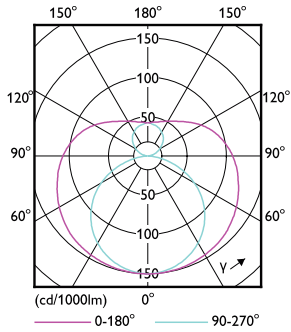


LEDtube DS 14W G13 1800lm 840



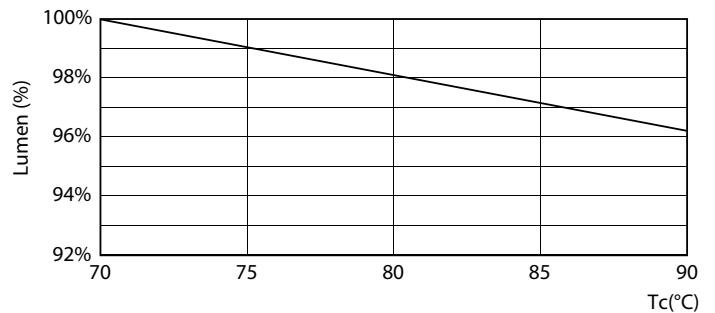
LEDtube DS 14W G13 1800lm 840

Photometric data

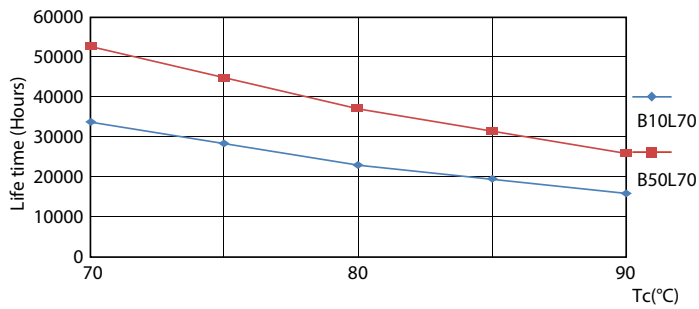


LEDtube DS 14W G13 1800lm

Lifetime

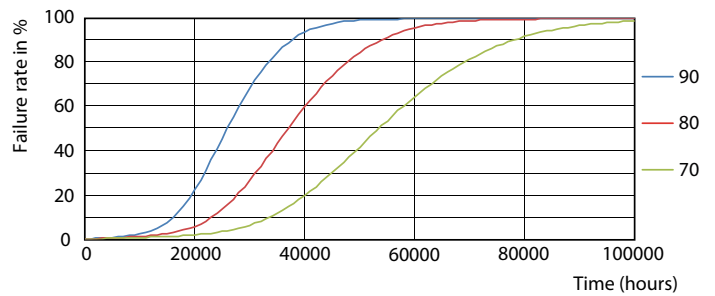


Life Expectancy Diagram



LEDtube DS 14W 50K LifetimeVsTc

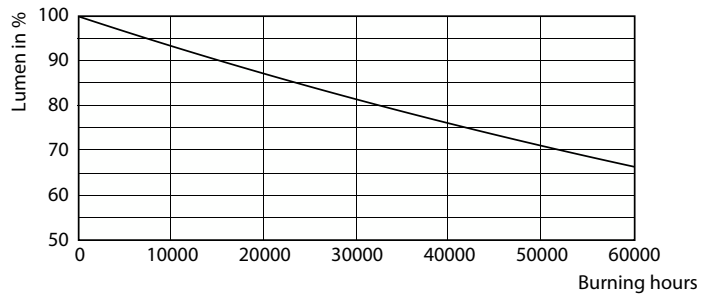
LEDtube DS 14W 50K LumenVsTc



LEDtube DS 14W 50K FailureRate

T8

Lifetime



Lumen Maintenance Diagram

