



LED Corn Cobs

450CC/LED/840/LS EX39 BB 3/1

Philips Corn Cob LED replacement lamps are perfect LED replacement for a variety of outdoor applications. High intensity illumination, which means you get added visibility for applications like streets, public areas, and much more for a fraction of the energy used by conventional HID.

Product data

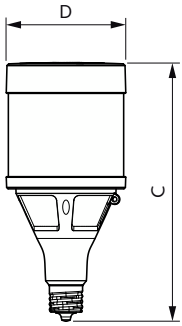
General information	
Cap-Base	EX39 [Exclusionary Mogul Screw]
EU RoHS compliant	Yes
Nominal Lifetime (Nom)	50000 h
Switching Cycle	50000X
Light technical	
Color Code	840 [CCT of 4000K]
Luminous Flux (Nom)	65000 lm
Color Designation	Cool White (CW)
Correlated Color Temperature (Nom)	4000 K
Luminous Efficacy (rated) (Nom)	144.00 lm/W
Color Consistency	ANSI 4000K quadrangle
Color Rendering Index (Nom)	80
LLMF At End Of Nominal Lifetime (Nom)	70 %
Operating and electrical	
Input Frequency	50 to 60 Hz
Power (Nom)	450 W
Lamp Current (Nom)	1700 mA
Starting Time (Nom)	2 s
Warm Up Time to 60% Light (Nom)	2 s
UL Type	Type B - bypass the ballast

Power Factor (Nom)	0.9
Voltage (Nom)	277-480 V
Temperature	
T-Case Maximum (Nom)	91 °C
Controls and dimming	
Dimmable	Preset Dimming
Mechanical and housing	
Bulb Finish	Clear
Bulb Shape	Corncob

Product data	
Order product name	450CC/LED/840/LS EX39 BB 3/1
EAN/UPC - Product	046677564735
Order code	929003019704
Numerator - Quantity Per Pack	1
Numerator - Packs per outer box	3
Material Nr. (12NC)	929003019704
Net Weight (Piece)	1.784 kg

LED Corn Cobs

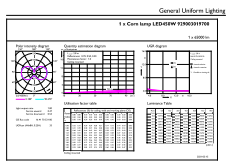
Dimensional drawing



450CC/LED/840/LS EX39 BB 3/1

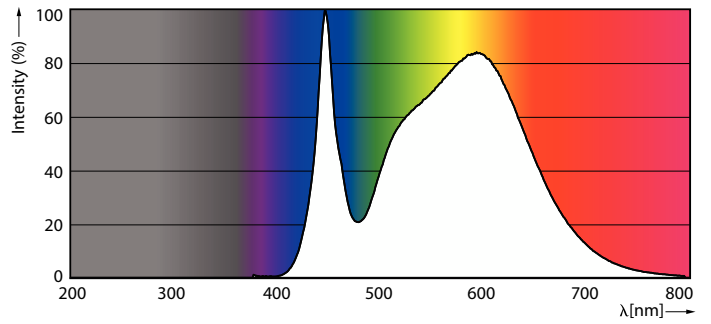
Product	D	C
450CC/LED/840/LS EX39 BB 3/1	142 mm	308 mm

Photometric data

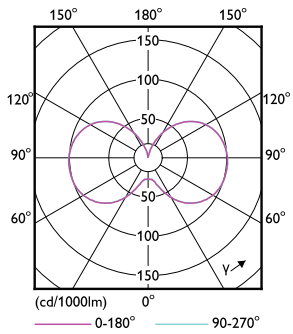


© 2022 Philips Lighting B.V. Page 11/11

LEDTForce LS 450W Corncob EX39 840-GUL



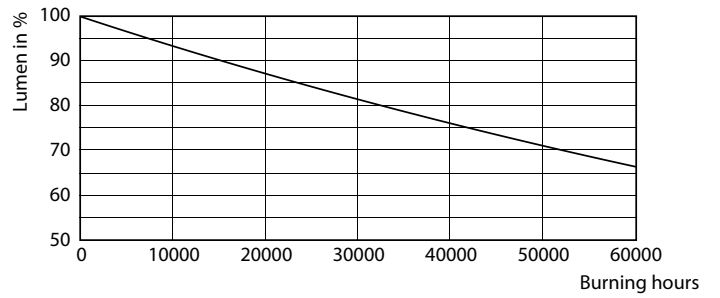
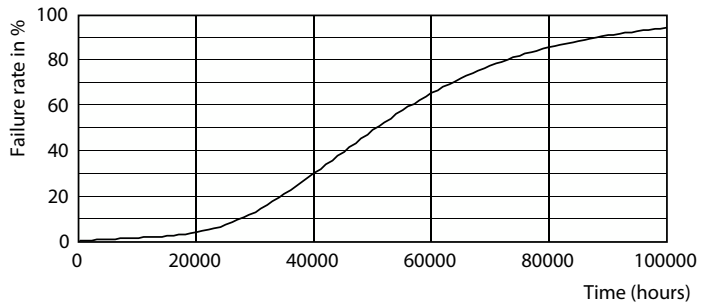
LEDTForce LS 450W Corncob EX39 840-POC



LEDTForce LS 450W Corncob EX39-LDD

LED Corn Cobs

Lifetime



50K

50K

