



# MASTER LEDtube EM/ Mains T8

## MASTER LEDtube DE 1200mm 13W865 100-240V T8

The Philips MASTER LEDtube integrates a LED light source into a traditional fluorescent form factor. Its unique design creates a perfectly uniform visual appearance which cannot be distinguished from traditional fluorescent. For those that are looking for value for money within limited budget and re-lamping efforts for better light effect and lifetime.

### Warnings and Safety

- NOTE: The overall energy efficiency and light distribution of any installation that uses these lamps will be determined by the design of the installation.

### Product data

General information		Color Rendering Index (Nom)		80
Cap-Base	G13 [ Medium Bi-Pin Fluorescent]	LLMF At End Of Nominal Lifetime (Nom)		70 %
EU RoHS compliant	Yes	Operating and electrical		
Nominal Lifetime (Nom)	50000 h	Input Frequency	50 to 60 Hz	
Switching Cycle	200000X	Power (Nom)	13 W	
Light technical		Lamp Current (Max)	150 mA	
Color Code	865 [ CCT of 6500K]	Lamp Current (Min)	53 mA	
Beam Angle (Nom)	240 °	Starting Time (Nom)	0.5 s	
Luminous Flux (Nom)	2100 lm	Warm Up Time to 60% Light (Nom)	0.5 s	
Color Designation	Cool Daylight	Power Factor (Nom)	0.9	
Correlated Color Temperature (Nom)	6500 K	Voltage (Nom)	100-240 V	
Luminous Efficacy (rated) (Nom)	161.00 lm/W			
Color Consistency	<6			

# MASTER LEDtube EM/Mains T8

## Temperature

T-Ambient (Max)	45 °C
T-Ambient (Min)	-20 °C
T-Storage (Max)	65 °C
T-Storage (Min)	-40 °C
T-Case Maximum (Nom)	65 °C

## Controls and dimming

Dimmable	No
----------	----

## Mechanical and housing

Bulb Finish	Frosted
Bulb Material	Glass
Product Length	1200 mm
Bulb Shape	Tube, double-ended

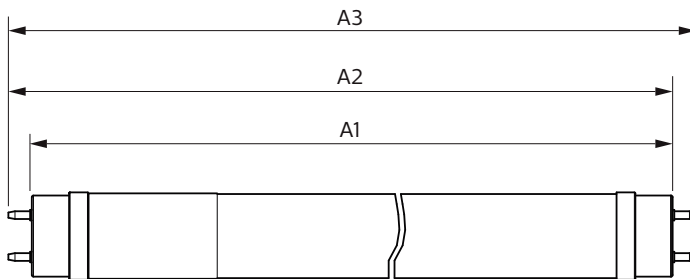
## Approval and application

Energy Saving Product	Yes
Approval Marks	RoHS compliance KEMA Keur certificate

## Product data

Full product code	871951430112200
Order product name	MASTER LEDtube DE 1200mm 13W865 100-240V T8
EAN/UPC - Product	8719514301122
Order code	929002483608
Numerator - Quantity Per Pack	1
Numerator - Packs per outer box	20
Material Nr. (12NC)	929002483608
Net Weight (Piece)	0.199 kg

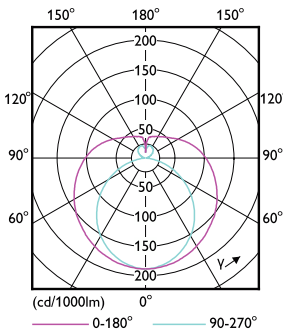
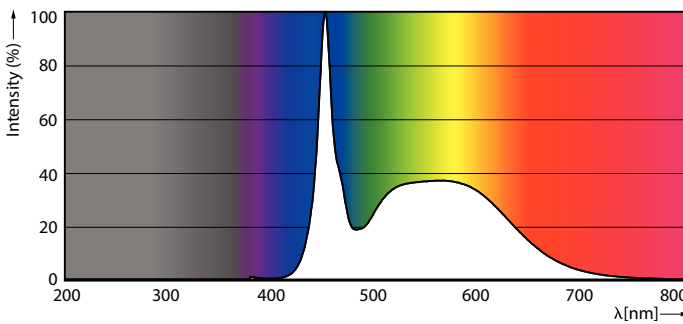
## Dimensional drawing



Product	D1	D2	A1	A2	A3
MASTER LEDtube DE 1200mm 13W865 100-240V T8	26 mm	28 mm	1198 mm	1205 mm	1212 mm

MASTER LEDtube DE 1200mm 13W865 100-240V T8

## Photometric data

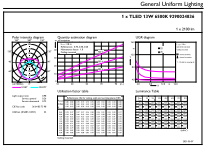


LEDtube MAS TW 13W G13 2100lm 865-POC

LEDtube MAS TW 13W G13 2100lm-LDD

# MASTER LEDtube EM/Mains T8

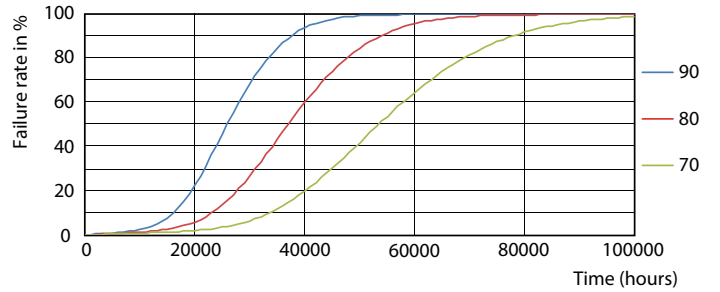
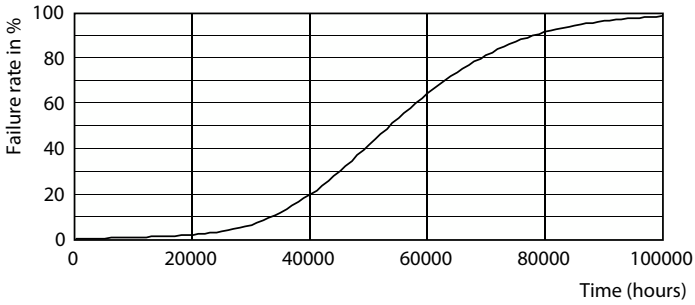
## Photometric data



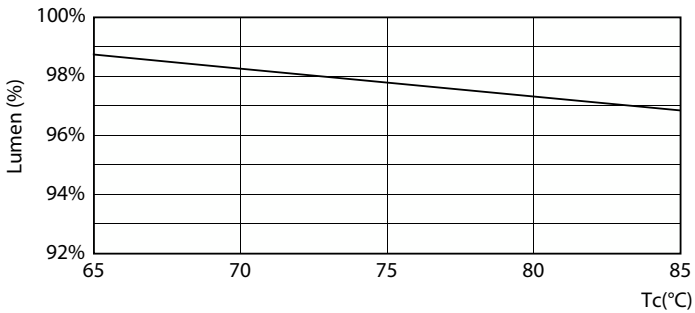
Technical Parameters 43 Page 10

LEDtube MAS TW 13W G13 2100lm 865-GUL

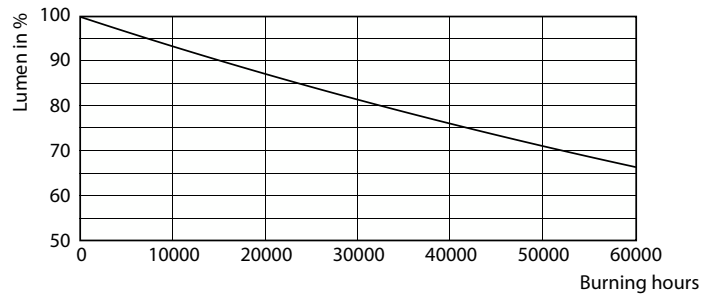
## Lifetime



Life Expectancy Diagram



FailureRate

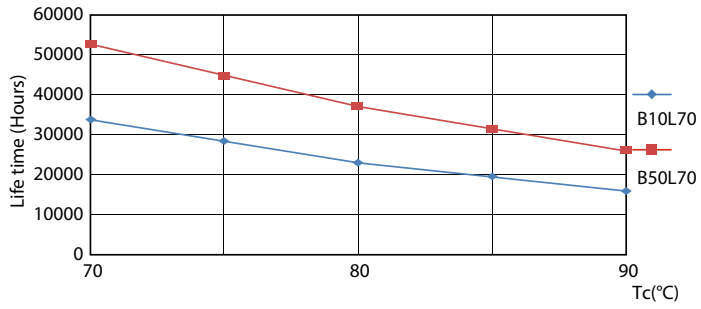


LEDtube MAS TW 6,5W 50K LumenVsTc-LMP

Lumen Maintenance Diagram

# MASTER LEDtube EM/Mains T8

## Lifetime



LifetimeVsTc

