



T8

16.9T8/MAS/48-835/MF25/P 10/1

Our TLEDs are available in InstantFit (Type A / Type C) or MainsFit (Ballast bypass / Type B) versions. The InstantFit lamps work on a broad variety of ballasts and LED drivers. Only InstantFit has over 15,000 lamp & ballast combinations delivering even light output, energy savings and a long lifetime. Our MainsFit products feature a double-ended design, simplifying installation while a proprietary safety circuit minimizes a shock risk. Lamp sizes range from 2-foot to 8-foot and U-bend with a variety of lumen outputs.

Product data

General information	
Cap-Base	G13 [Medium Bi-Pin Fluorescent]
EU RoHS compliant	Yes
Nominal Lifetime (Nom)	70000 h
Switching Cycle	50000X
Light technical	
Color Code	835 [CCT of 3500K]
Beam Angle (Nom)	180 °
Luminous Flux (Nom)	2400 lm
Color Designation	White (WH)
Correlated Color Temperature (Nom)	3500 K
Luminous Efficacy (rated) (Nom)	142.00 lm/W
Color Consistency	<6
Color Rendering Index (Nom)	80
LLMF At End Of Nominal Lifetime (Nom)	70 %
Operating and electrical	
Input Frequency	50 to 60 Hz
Power (Nom)	16.9 W

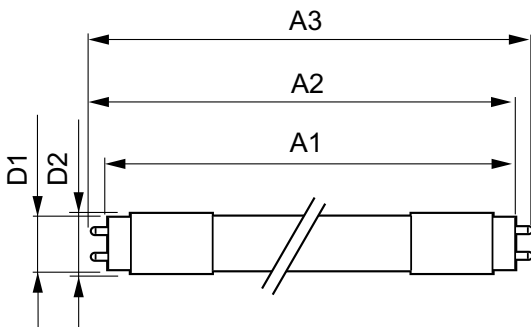
Lamp Current (Max)	150 mA
Lamp Current (Min)	65 mA
Starting Time (Nom)	0.5 s
Warm Up Time to 60% Light (Nom)	0.5 s
UL Type	Type B - bypass the ballast
Power Factor (Nom)	0.9
Voltage (Nom)	120-277 V
Temperature	
T-Ambient (Max)	45 °C
T-Ambient (Min)	-20 °C
T-Storage (Max)	65 °C
T-Storage (Min)	-40 °C
T-Case Maximum (Nom)	70 °C
Controls and dimming	
Dimmable	Limited
Mechanical and housing	
Bulb Finish	Frosted

T8

Bulb Material	Plastic
Product Length	1200 mm
Bulb Shape	Tube, double-ended
Approval and application	
Energy Saving Product	Yes
Approval Marks	RoHS compliance UL certificate DLC compliance
Product data	
Order product name	16.9T8/MAS/48-835/MF25/P 10/1

EAN/UPC - Product	046677575564
Order code	929002442434
Numerator - Quantity Per Pack	1
Numerator - Packs per outer box	10
Material Nr. (12NC)	929002442434
Net Weight (Piece)	0.120 kg
Model Number	9290024424

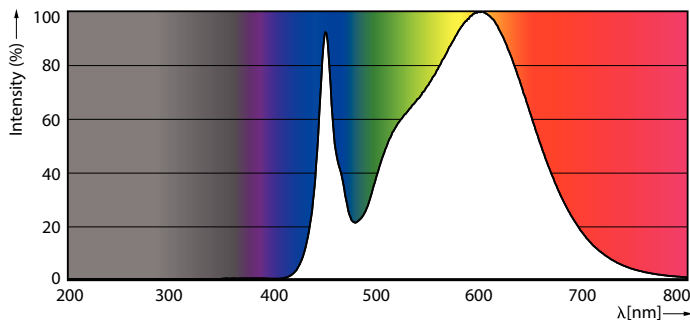
Dimensional drawing



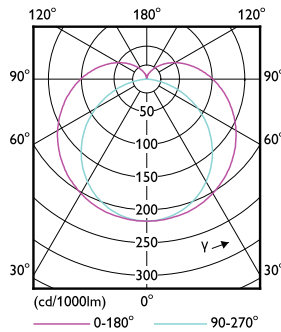
16.9T8/MAS/48-835/MF25/P 10/1

Product	D1	D2	A1	A2	A3
16.9T8/MAS/48-835/MF25/P 10/1	25.7 mm	28 mm	1198 mm	1205 mm	1212 mm

Photometric data

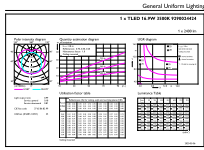


LEDtube 16,9W G13 2400lm 835



LEDtube 16,9W G13

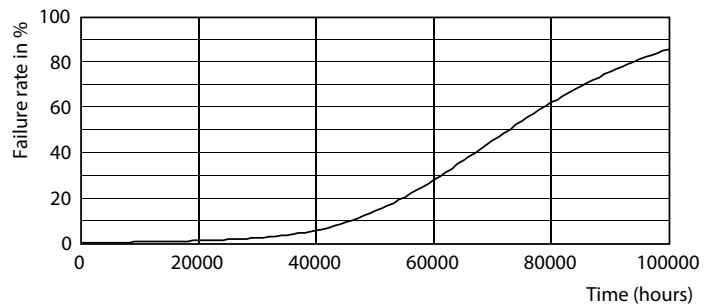
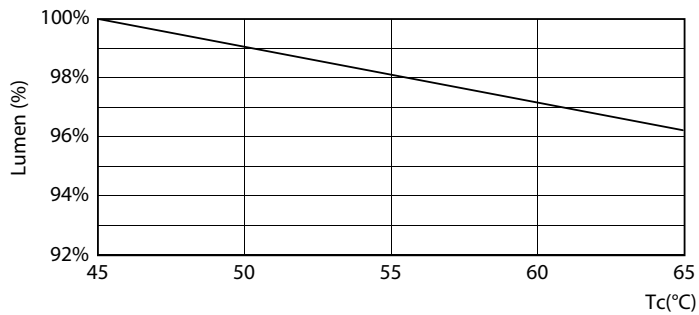
Photometric data



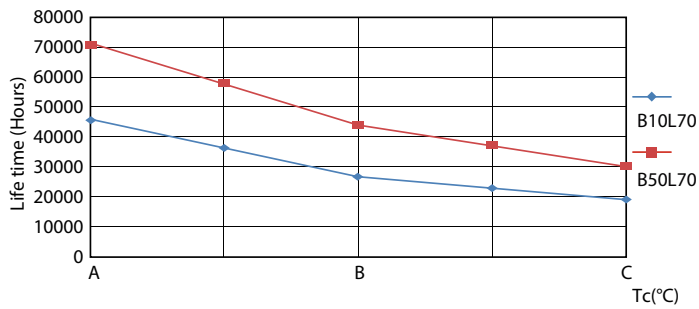
LED Tube Parameters 43 Page 10

LEDtube 16,9W G13 2400lm 835

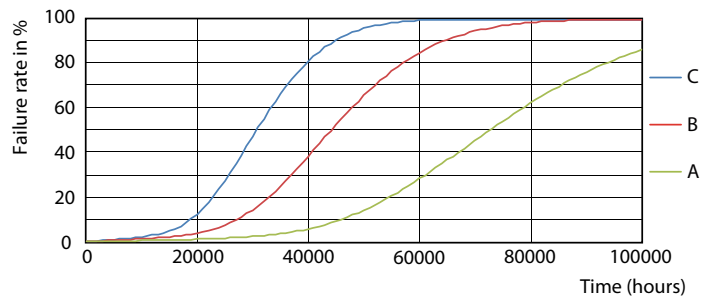
Lifetime



LEDtube 16,9W 70K LumenVsTc



LEDtube_70K-LED

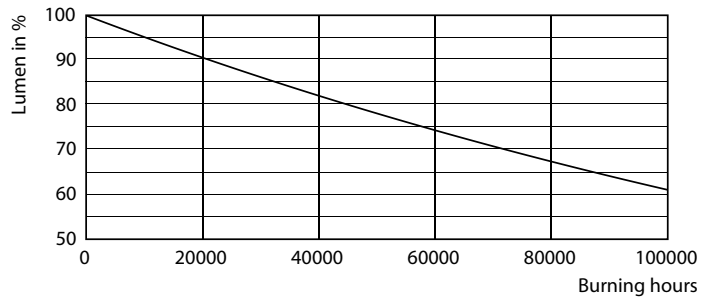


LEDtube_70K_LifetimeVsTc-LED

LEDtube_70K_FailureRate-LED

T8

Lifetime



LEDtube_70K-LMP

