

# LEDtube Mains T5

## MAS LEDtube 1200mm HO 26W 830 G5 VWV BR

The new Philips Master LEDtube Mains T5 brings simplicity to your lighting project. You don't need to pay attention to the driver technology anymore. Thanks to a unique design, Philips MASTER LEDtube Mains T5 directly installs in luminaires operating on mains power connection. So simple to operate and no need to carry double stock of products! Perfectly safe, reliable & easy to install Philips MASTER LEDtube Mains T5 is the ideal alternative to standard fluorescent tubes to maximize value overlifetime with high energy saving and lower maintenance costs.

### Product data

General information	
Cap-Base	G5 [ G5]
EU RoHS compliant	Yes
Nominal Lifetime (Nom)	25000 h
Switching Cycle	200000X
Light technical	
Color Code	830 [ CCT of 3000K]
Beam Angle (Nom)	200 °
Luminous Flux (Nom)	3700 lm
Color Designation	White (WH)
Correlated Color Temperature (Nom)	3000 K
Luminous Efficacy (rated) (Nom)	142.00 lm/W
Color Consistency	<6
Color Rendering Index (Nom)	80
LLMF At End Of Nominal Lifetime (Nom)	70 %
Operating and electrical	
Input Frequency	50 to 60 Hz
Power (Nom)	26 W

Lamp Current (Max)	230 mA
Lamp Current (Min)	140 mA
Starting Time (Nom)	0.5 s
Warm Up Time to 60% Light (Nom)	0.5 s
Power Factor (Nom)	0.92
Voltage (Nom)	100-277 V

Temperature	
T-Ambient (Max)	45 °C
T-Ambient (Min)	-20 °C
T-Storage (Max)	65 °C
T-Storage (Min)	-40 °C
T-Case Maximum (Nom)	50 °C

Controls and dimming	
Dimmable	No

Mechanical and housing	
Product Length	1200 mm

# LEDtube Mains T5

Bulb Shape	Tube, double-ended
------------	--------------------

## Approval and application

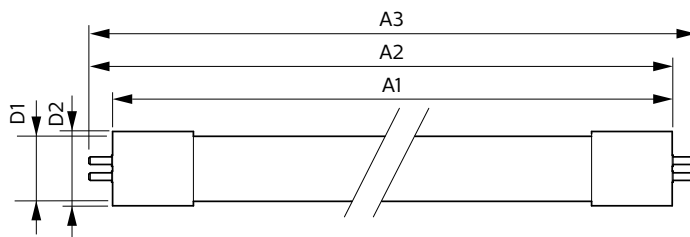
Energy Saving Product	Yes
Approval Marks	RoHS compliance
Energy Consumption kWh/1000 h	- kWh

## Product data

Full product code	871869976533000
Order product name	MAS LEDtube 1200mm HO 26W 830 G5 VVW BR

EAN/UPC - Product	8718699765330
Order code	929002388112
Numerator - Quantity Per Pack	1
Numerator - Packs per outer box	20
Material Nr. (12NC)	929002388112
Net Weight (Piece)	0.240 kg

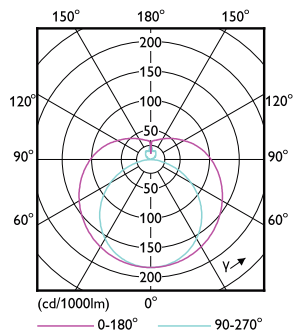
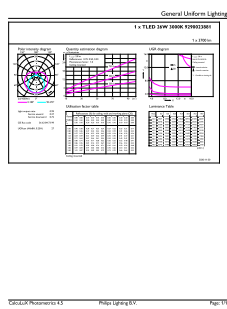
## Dimensional drawing



Product	D1	D2	A1	A2	A3
MAS LEDtube 1200mm HO 26W 830 G5 VVW BR	15.8 mm	19 mm	1149 mm	1156.1 mm	1163.2 mm

MAS LEDtube 1200mm HO 26W 830 G5 VVW BR

## Photometric data

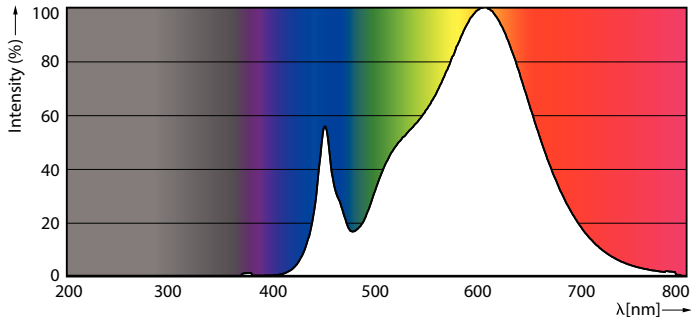


LEDtube MAS 1 26W G5 3700lm 830

LEDtube MAS 1 26W G5 3700lm

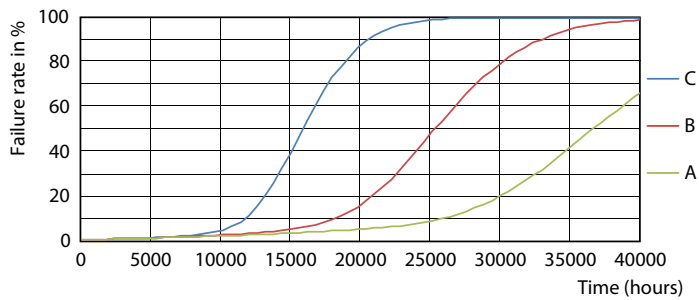
# LEDtube Mains T5

## Photometric data

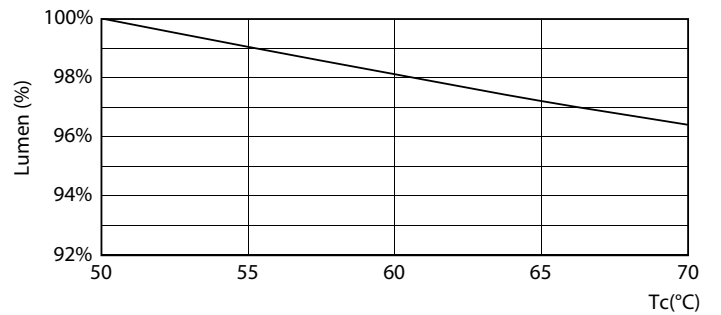


LEDtube MAS 1 26W G5 3700lm 830

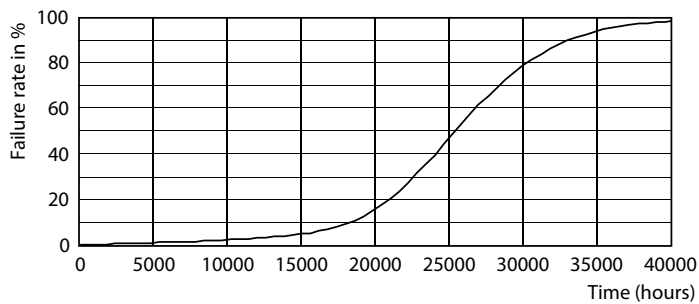
## Lifetime



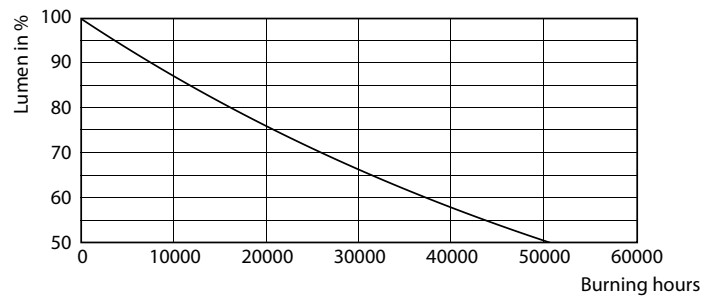
LEDtube 25K FailureRate



LEDtube MAS 1 26W 25k LumenVsTc



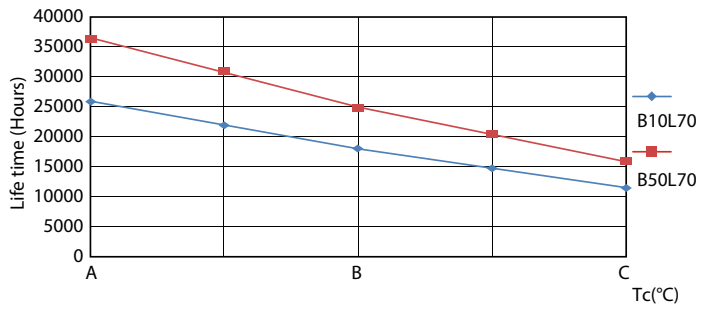
LEDtube 25K



LEDtube 25K

# LEDtube Mains T5

## Lifetime



LEDtube 25K LifetimeVsTc

