



Other LEDtube

MAS Ledtube 600mm HO 8.3W 840 T5 DC

Philips LEDtube integrates a LED light source into a traditional fluorescent form factor. This product is the ideal solution for uplamping in general lighting applications: it meets basic lighting requirements, offers significant energy savings, and is environmentally friendly.

Product data

| General information | |
|---------------------------------------|---------------------|
| Cap-Base | G5 [G5] |
| EU RoHS compliant | Yes |
| Nominal Lifetime (Nom) | 50000 h |
| Switching Cycle | 200000X |
| Light technical | |
| Color Code | 840 [CCT of 4000K] |
| Beam Angle (Nom) | 160 ° |
| Luminous Flux (Nom) | 1250 lm |
| Color Designation | Cool White (CW) |
| Correlated Color Temperature (Nom) | 4000 K |
| Luminous Efficacy (rated) (Nom) | 150.00 lm/W |
| Color Consistency | <6 |
| Color Rendering Index (Nom) | 82 |
| LLMF At End Of Nominal Lifetime (Nom) | 70 % |
| Operating and electrical | |
| Input Frequency | - Hz |
| Power (Nom) | 8.3 W |
| Lamp Current (Max) | 150 mA |
| Lamp Current (Min) | 150 mA |
| Lamp Current (Nom) | 150 mA |

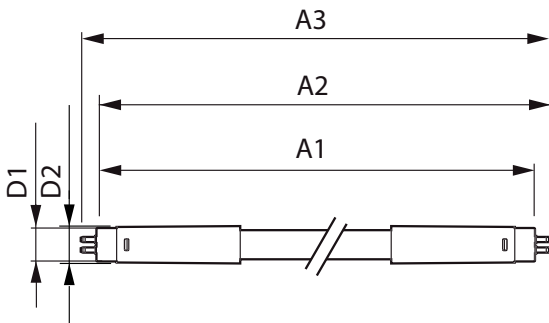
| Starting Time (Nom) | 0.5 s |
|---------------------------------|--------------------|
| Warm Up Time to 60% Light (Nom) | 0.5 s |
| Power Factor (Nom) | - |
| Voltage (Nom) | 52-59 V |
| Temperature | |
| T-Ambient (Max) | 45 °C |
| T-Ambient (Min) | -20 °C |
| T-Storage (Max) | 65 °C |
| T-Storage (Min) | -40 °C |
| T-Case Maximum (Nom) | 45 °C |
| Controls and dimming | |
| Dimmable | Yes |
| Mechanical and housing | |
| Bulb Finish | Frosted |
| Bulb Material | Glass |
| Product Length | 600 mm |
| Bulb Shape | Tube, double-ended |
| Approval and application | |
| Energy Saving Product | Yes |

Other LEDtube

| | |
|-------------------------------|--|
| Approval Marks | RoHS compliance CE marking KEMA Keur certificate |
| Energy Consumption kWh/1000 h | 9 kWh |
| Product data | |
| Full product code | 871869976519400 |
| Order product name | MAS Ledtube 600mm HO 8.3W 840 T5 DC |
| EAN/UPC - Product | 8718699765194 |

| | |
|---------------------------------|--------------|
| Order code | 929002387208 |
| Numerator - Quantity Per Pack | 1 |
| Numerator - Packs per outer box | 20 |
| Material Nr. (12NC) | 929002387208 |
| Net Weight (Piece) | 0.094 kg |

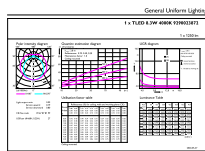
Dimensional drawing



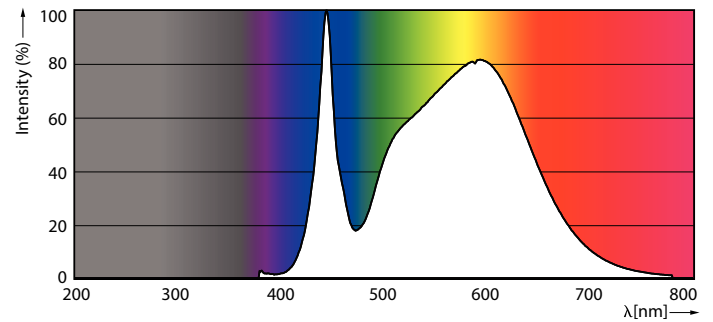
MAS Ledtube 600mm HO 8.3W 840 T5 DC

| Product | D1 | D2 | A1 | A2 | A3 |
|-------------------------------------|---------|-------|--------|----------|----------|
| MAS Ledtube 600mm HO 8.3W 840 T5 DC | 15.8 mm | 19 mm | 549 mm | 556.1 mm | 563.2 mm |

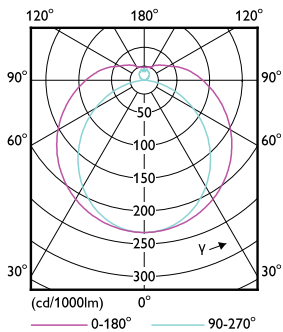
Photometric data



General Uniform Lighting
1 x 1 (LED 8,3W HO 1250lm 840)
Page 10



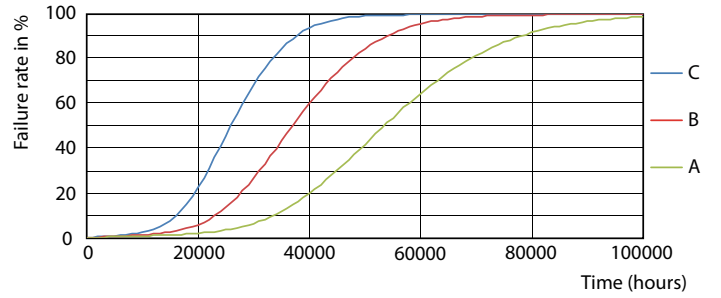
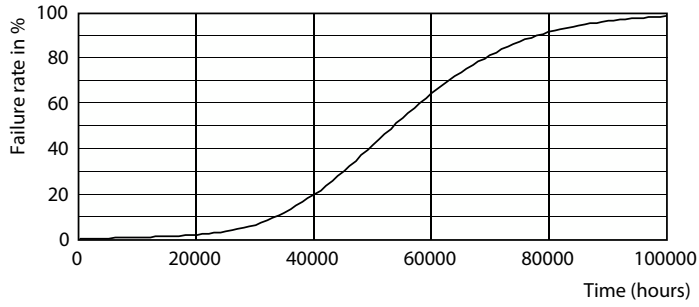
LEDtube MAS 8,3W G5 1250lm 840



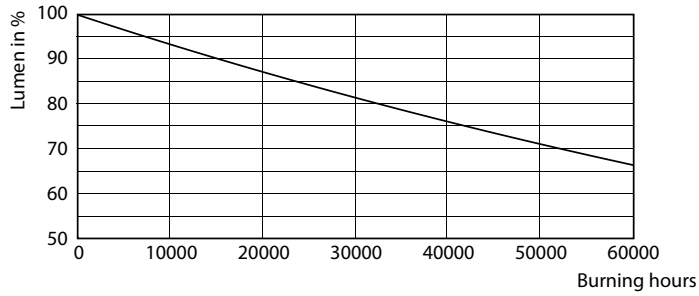
LEDtube MAS 8,3W G5 1250lm

Other LEDtube

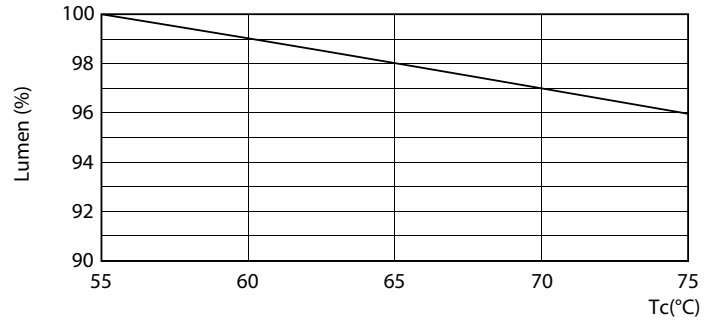
Lifetime



Life Expectancy Diagram

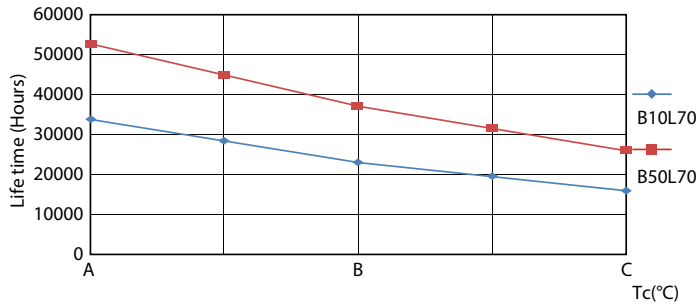


LEDtube 50K FailureRate-LED



Lumen Maintenance Diagram

LEDtube MAS 8,3W 50K LumenVsTc



LEDtube 50K LifetimeVsTc-LED

Other LEDtube

