



MASTER LEDtube InstantFit HF T5



Master LEDtube HF 1200mm HO 26W 865 T5 OE

The Philips MASTER LEDtube integrates a LED light source into a traditional fluorescent form factor. Its unique design creates a perfectly uniform visual appearance, which cannot be distinguished from traditional fluorescent. These T5 lighting tubes are the right choice for absolute performance and are designed to stand up to everyday conditions. Unparalleled savings thanks to low energy consumption and an exceptionally long lifetime make these T5 LED tubes the choice for every demanding application.

Product data

| General information | |
|----------------------------|----------|
| Cap-Base | G5 [G5] |
| EU RoHS compliant | Yes |
| Nominal Lifetime (Nom) | 60000 h |
| Switching Cycle | 50000X |
| Technical Type | 26-54W |
| Flux measurement reference | Sphere |

| Light technical | |
|------------------------------------|---------------------|
| Color Code | 865 [CCT of 6500K] |
| Beam Angle (Nom) | 200 ° |
| Luminous Flux (Nom) | 3900 lm |
| Color Designation | Cool Daylight |
| Correlated Color Temperature (Nom) | 6500 K |
| Luminous Efficacy (rated) (Nom) | 150.00 lm/W |
| Color Consistency | <6 |
| Color Rendering Index (Nom) | 80 |

| | |
|--|--|
| LLMF At End Of Nominal Lifetime (Nom) 70 % | |
|--|--|

| Operating and electrical | |
|---------------------------------|---------------|
| Input Frequency | 30K to 60K Hz |
| Power (Nom) | 26 W |
| Lamp Current (Max) | 620 mA |
| Lamp Current (Min) | 300 mA |
| Starting Time (Nom) | 0.5 s |
| Warm Up Time to 60% Light (Nom) | 0.5 s |
| Power Factor (Nom) | 0.9 |
| Voltage (Nom) | 20-90 V |

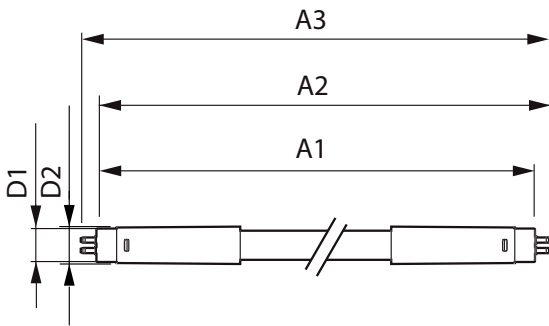
| Temperature | |
|-----------------|--------|
| T-Ambient (Max) | 45 °C |
| T-Ambient (Min) | -20 °C |
| T-Storage (Max) | 65 °C |
| T-Storage (Min) | -40 °C |

MASTER LEDtube InstantFit HF T5

| | |
|---------------------------------|--|
| T-Case Maximum (Nom) | 55 °C |
| Controls and dimming | |
| Dimmable | Yes - Check ballast compatibility |
| Mechanical and housing | |
| Bulb Finish | Frosted |
| Bulb Material | Glass |
| Product Length | 1200 mm |
| Bulb Shape | Tube, double-ended |
| Approval and application | |
| Energy Efficiency Class | D |
| Energy Saving Product | Yes |
| Approval Marks | RoHS compliance TUV CE marking KEMA Keur certificate |

| | |
|---------------------------------|---|
| Energy Consumption kWh/1000 h | 26 kWh |
| EPREL Registration Number | 406211 |
| Product data | |
| Full product code | 871869974955200 |
| Order product name | Master LEDtube HF 1200mm HO 26W 865 T5 OE |
| | OE |
| EAN/UPC - Product | 8718699749552 |
| Order code | 929002352202 |
| Numerator - Quantity Per Pack | 1 |
| Numerator - Packs per outer box | 10 |
| Material Nr. (12NC) | 929002352202 |
| Net Weight (Piece) | 0.240 kg |

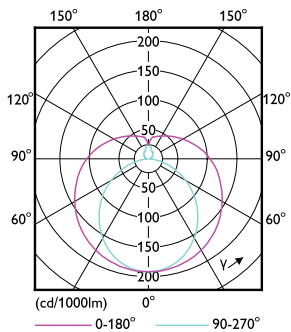
Dimensional drawing



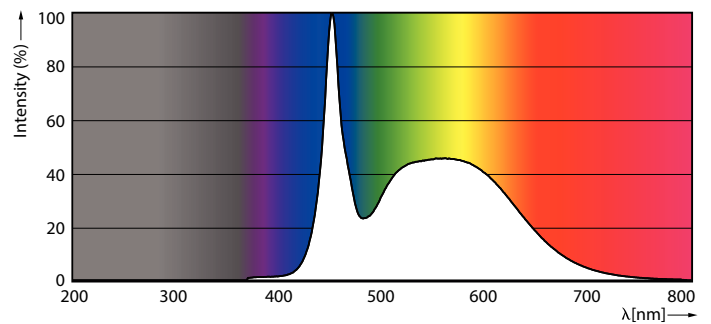
Master LEDtube HF 1200mm HO 26W 865 T5 OE

| Product | D1 | D2 | A1 | A2 | A3 |
|---|---------|-------|---------|---------|---------|
| Master LEDtube HF 1200mm HO 26W 865 T5 OE | 15.5 mm | 19 mm | 1149 mm | 1156 mm | 1163 mm |

Photometric data



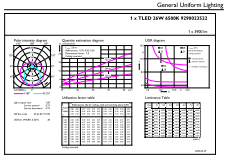
LEDtube MAS 26W G5 3700lm



LEDtube MAS 26W G5 3900lm 865

MASTER LEDtube InstantFit HF T5

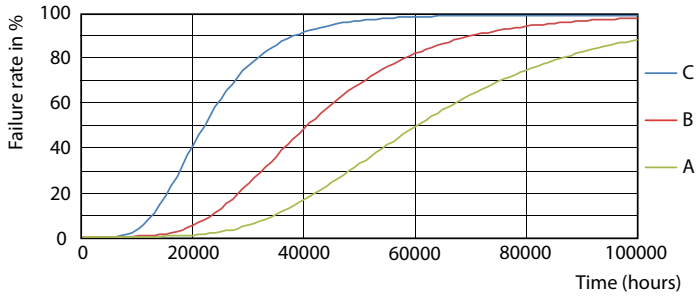
Photometric data



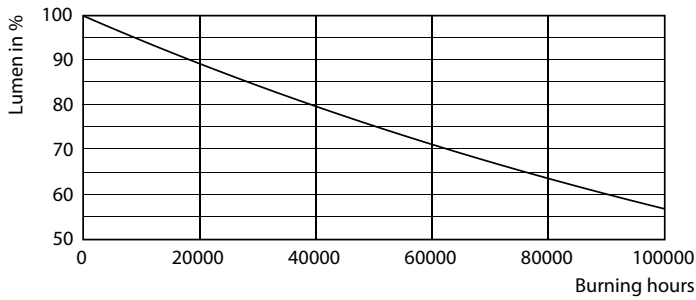
© 2022 Philips Lighting B.V. Page 11

LEDtube MAS 26W G5 3900lm 865 1200mm

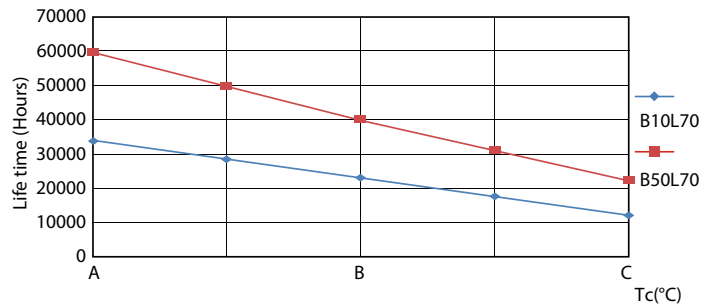
Lifetime



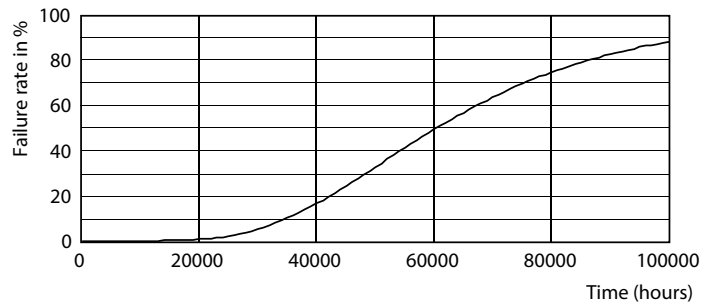
FailureRate



Lumen Maintenance Diagram



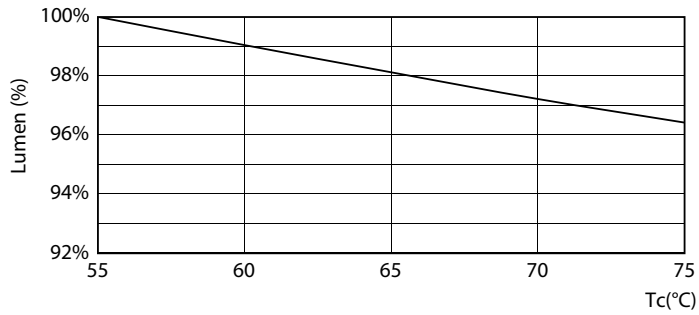
LifetimeVsTc



Life Expectancy Diagram

MASTER LEDtube InstantFit HF T5

Lifetime



LEDtube 26W 60K LumenVsTc 1

