



T8

14.5T8/MAS/48-850/MF21/P 10/1

Our TLEDs are available in InstantFit (Type A / Type C) or MainsFit (Ballast bypass / Type B) versions. The InstantFit lamps work on a broad variety of ballasts and LED drivers. Only InstantFit has over 15,000 lamp & ballast combinations delivering even light output, energy savings and a long lifetime. Our MainsFit products feature a double-ended design, simplifying installation while a proprietary safety circuit minimizes a shock risk. Lamp sizes range from 2-foot to 8-foot and U-bend with a variety of lumen outputs.

Product data

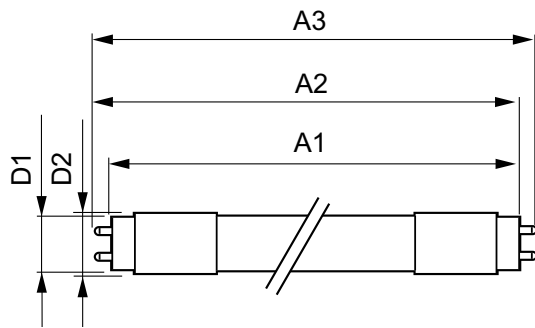
General information		Lamp Current (Max)	
Cap-Base	G13 [Medium Bi-Pin Fluorescent]	Lamp Current (Max)	125 mA
EU RoHS compliant	Yes	Lamp Current (Min)	54 mA
Nominal Lifetime (Nom)	70000 h	Starting Time (Nom)	0.5 s
Switching Cycle	50000X	Warm Up Time to 60% Light (Nom)	0.5 s
Light technical		UL Type	Type B - bypass the ballast
Color Code	850 [CCT of 5000K]	Power Factor (Nom)	0.9
Beam Angle (Nom)	180 °	Voltage (Nom)	120-277 V
Luminous Flux (Nom)	2100 lm	Temperature	
Color Designation	Daylight	T-Ambient (Max)	45 °C
Correlated Color Temperature (Nom)	5000 K	T-Ambient (Min)	-20 °C
Luminous Efficacy (rated) (Nom)	144.00 lm/W	T-Storage (Max)	65 °C
Color Consistency	<5	T-Storage (Min)	-40 °C
Color Rendering Index (Nom)	80	T-Case Maximum (Nom)	70 °C
LLMF At End Of Nominal Lifetime (Nom)	70 %	Controls and dimming	
Operating and electrical		Dimmable	Limited
Input Frequency	50 to 60 Hz	Mechanical and housing	
Power (Nom)	14.5 W	Bulb Finish	Frosted

T8

Bulb Material	Plastic
Product Length	1200 mm
Bulb Shape	Tube, double-ended
Approval and application	
Energy Saving Product	Yes
Approval Marks	RoHS compliance UL certificate DLC compliance
Product data	
Order product name	14.5T8/MAS/48-850/MF21/P 10/1

EAN/UPC - Product	046677575540
Order code	929002325734
Numerator - Quantity Per Pack	1
Numerator - Packs per outer box	10
Material Nr. (12NC)	929002325734
Net Weight (Piece)	0.120 kg
Model Number	9290023257

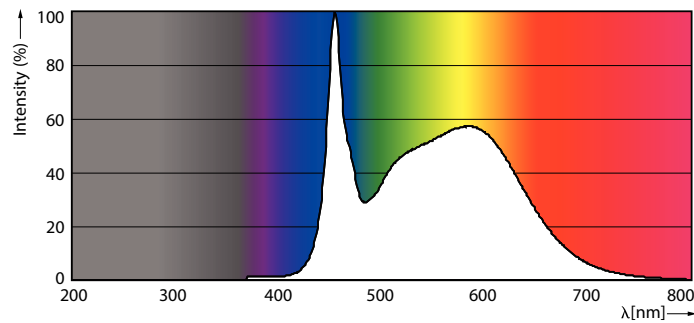
Dimensional drawing



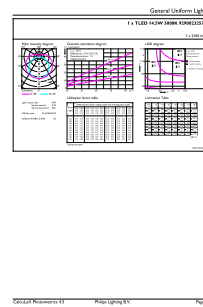
14.5T8/MAS/48-850/MF21/P 10/1

Product	D1	D2	A1	A2	A3
14.5T8/MAS/48-850/MF21/P 10/1	25.7 mm	28 mm	1198 mm	1205 mm	1212 mm

Photometric data

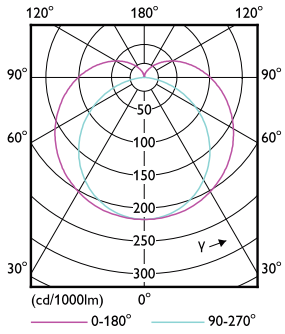


LEDtube_G13_850-POC



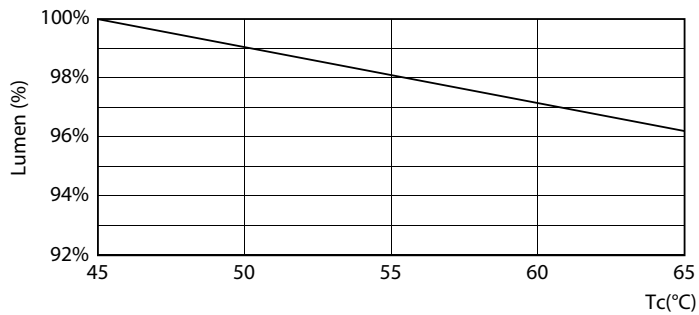
LEDtube_14.5W_G13_850-GUL

Photometric data

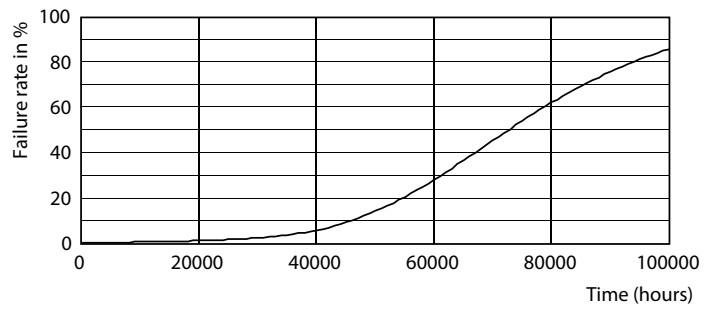


LEDtube_G13_1-LDD

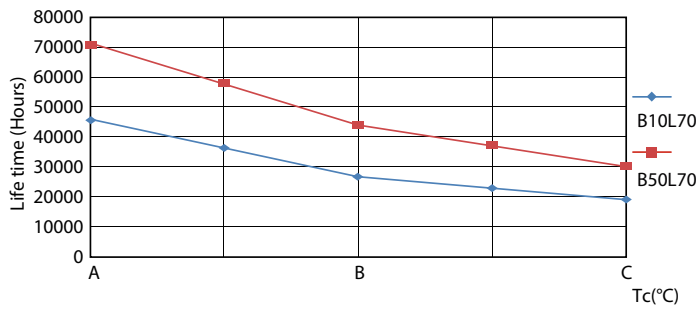
Lifetime



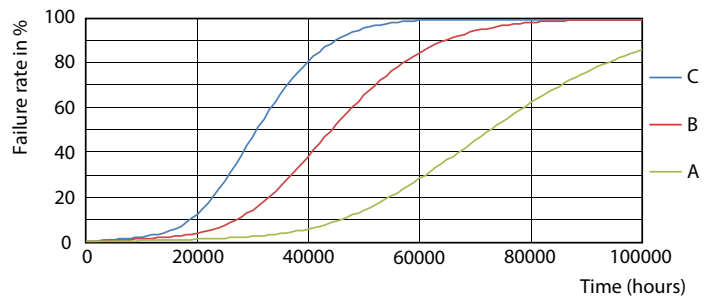
LEDtube_70K_1_LumenVsTc-LMP



LEDtube_70K-LED



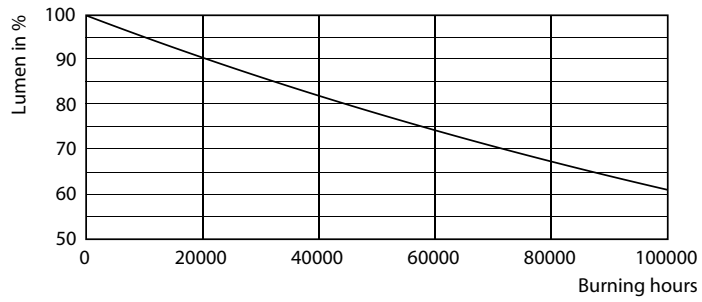
LEDtube_70K_LifetimeVsTc-LED



LEDtube_70K_FailureRate-LED

T8

Lifetime



LEDtube_70K-LMP

