



# T8

## 10.5T8/MAS/48-835/MF15/P 10/1

Our TLEDs are available in InstantFit (Type A / Type C) or MainsFit (Ballast bypass / Type B) versions. The InstantFit lamps work on a broad variety of ballasts and LED drivers. Only InstantFit has over 15,000 lamp & ballast combinations delivering even light output, energy savings and a long lifetime. Our MainsFit products feature a double-ended design, simplifying installation while a proprietary safety circuit minimizes a shock risk. Lamp sizes range from 2-foot to 8-foot and U-bend with a variety of lumen outputs.

### Product data

General information	
Cap-Base	G13 [ Medium Bi-Pin Fluorescent]
EU RoHS compliant	Yes
Nominal Lifetime (Nom)	70000 h
Switching Cycle	50000X
Light technical	
Color Code	835 [ CCT of 3500K]
Beam Angle (Nom)	180 °
Luminous Flux (Nom)	1600 lm
Color Designation	White (WH)
Correlated Color Temperature (Nom)	3500 K
Luminous Efficacy (rated) (Nom)	152.00 lm/W
Color Consistency	<6
Color Rendering Index (Nom)	80
LLMF At End Of Nominal Lifetime (Nom)	70 %
Operating and electrical	
Input Frequency	50 to 60 Hz
Power (Nom)	10.5 W

Lamp Current (Max)	100 mA
Lamp Current (Min)	43 mA
Starting Time (Nom)	0.5 s
Warm Up Time to 60% Light (Nom)	0.5 s
UL Type	Type B - bypass the ballast
Power Factor (Nom)	0.9
Voltage (Nom)	120-277 V
Temperature	
T-Ambient (Max)	45 °C
T-Ambient (Min)	-20 °C
T-Storage (Max)	65 °C
T-Storage (Min)	-40 °C
T-Case Maximum (Nom)	70 °C
Controls and dimming	
Dimmable	Limited
Mechanical and housing	
Bulb Finish	Frosted

# T8

Bulb Material	Plastic
Product Length	1200 mm
Bulb Shape	Tube, double-ended

## Approval and application

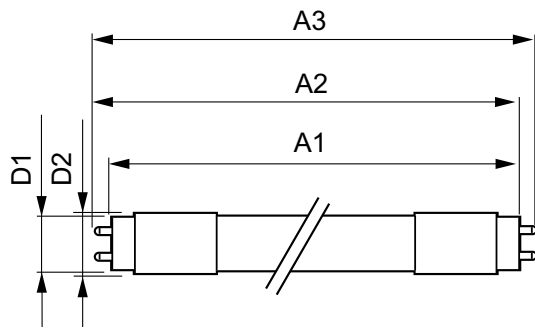
Energy Saving Product	Yes
Approval Marks	RoHS compliance UL certificate DLC compliance

## Product data

Order product name	10.5T8/MAS/48-835/MF15/P 10/1
--------------------	-------------------------------

EAN/UPC - Product	046677575489
Order code	929002325134
Numerator - Quantity Per Pack	1
Numerator - Packs per outer box	10
Material Nr. (12NC)	929002325134
Net Weight (Piece)	0.120 kg
Model Number	9290023251

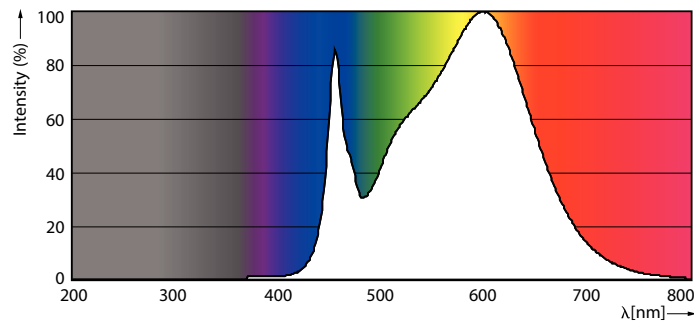
## Dimensional drawing



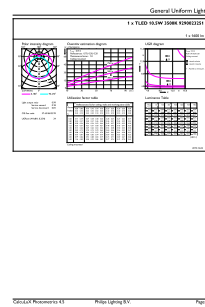
10.5T8/MAS/48-835/MF15/P 10/1

Product	D1	D2	A1	A2	A3
10.5T8/MAS/48-835/MF15/P 10/1	25.7 mm	28 mm	1198 mm	1205 mm	1212 mm

## Photometric data

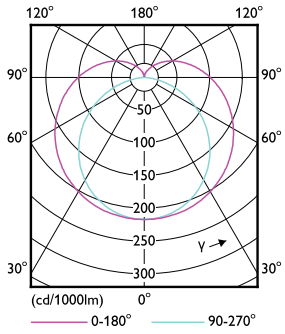


LEDtube\_G13\_835-POC



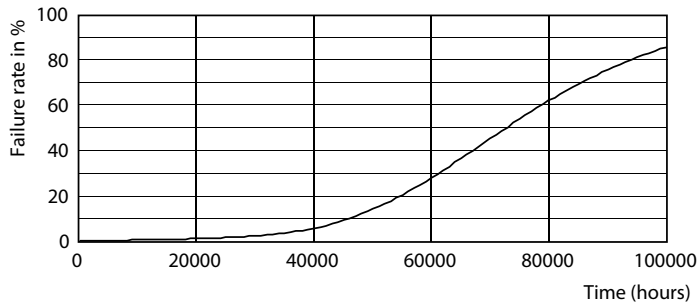
LEDtube\_10.5W\_G13\_835-GUL

Photometric data

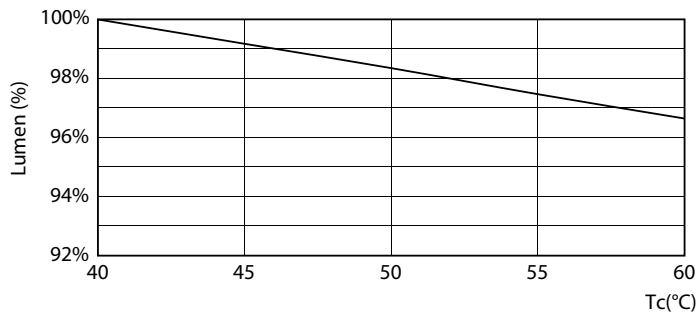


LEDtube\_G13\_1-LDD

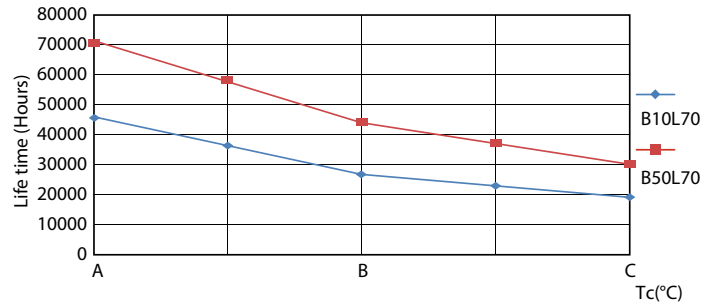
Lifetime



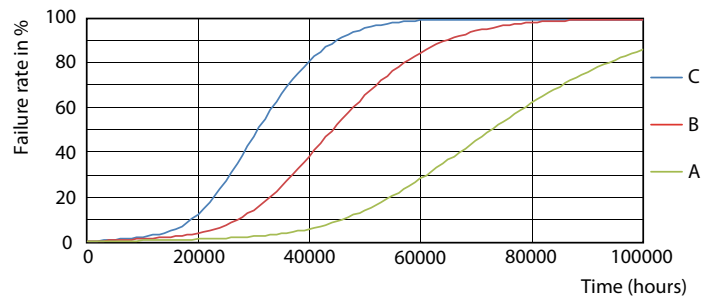
LEDtube\_70K-LED



LEDtube\_70K\_LumenVsTc-LMP



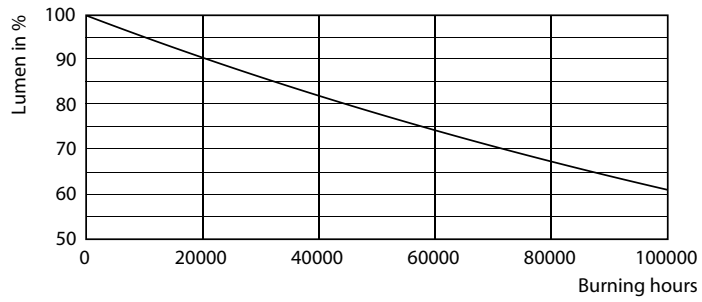
LEDtube\_70K\_LifetimeVsTc-LED



LEDtube\_70K\_FailureRate-LED

# T8

## Lifetime



LEDtube\_70K-LMP

