

MASTER LEDtube EM/ Mains T8

Master LEDTube 1200mm 20.5W 850 T8 W JP

The Philips MASTER LEDtube integrates a LED light source into a traditional fluorescent form factor. Its unique design creates a perfectly uniform visual appearance which cannot be distinguished from traditional fluorescent. For those that are looking for value for money within limited budget and re-lamping efforts for better light effect and lifetime.

Warnings and Safety

- NOTE: The overall energy efficiency and light distribution of any installation that uses these lamps will be determined by the design of the installation.

Product data

General information		LLMF At End Of Nominal Lifetime (Nom) 70 %	
Cap-Base	G13 [Medium Bi-Pin Fluorescent]	Operating and electrical	
EU RoHS compliant	Yes	Input Frequency	50 to 60 Hz
Nominal Lifetime (Nom)	50000 h	Power (Nom)	20.5 W
Switching Cycle	200000X	Lamp Current (Max)	208 mA
Technical Type	LEDTECH-LOV	Lamp Current (Min)	91 mA
Light technical		Starting Time (Nom)	0.5 s
Color Code	850 [CCT of 5000K]	Warm Up Time to 60% Light (Nom)	0.5 s
Beam Angle (Nom)	160 °	Power Factor (Nom)	0.9
Luminous Flux (Nom)	3300 lm	Voltage (Nom)	100-242 V
Color Designation	Daylight	Temperature	
Correlated Color Temperature (Nom)	5000 K	T-Ambient (Max)	45 °C
Luminous Efficacy (rated) (Nom)	160.00 lm/W	T-Ambient (Min)	-20 °C
Color Consistency	<6	T-Storage (Max)	65 °C
Color Rendering Index (Nom)	83		

MASTER LEDtube EM/Mains T8

T-Storage (Min)	-40 °C
T-Case Maximum (Nom)	60 °C

Controls and dimming

Dimmable	No
----------	----

Mechanical and housing

Bulb Finish	Frosted
Bulb Material	Plastic
Product Length	1200 mm
Bulb Shape	Tube, double-ended

Approval and application

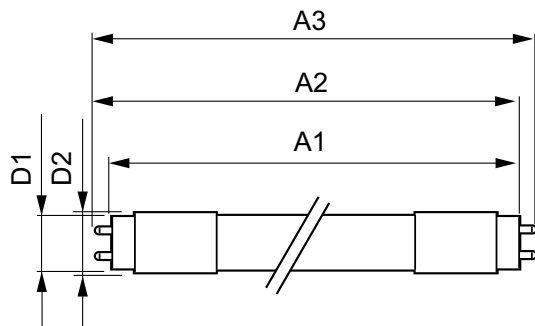
Energy Saving Product	Yes
-----------------------	-----

Approval Marks	RoHS compliance KEMA Keur certificate
----------------	---------------------------------------

Product data

Full product code	871951440254600
Order product name	Master LEDTube 1200mm 20.5W 850 T8 W JP
EAN/UPC - Product	8719514402546
Order code	929002320948
Numerator - Quantity Per Pack	1
Numerator - Packs per outer box	20
Material Nr. (12NC)	929002320948
Net Weight (Piece)	0.210 kg

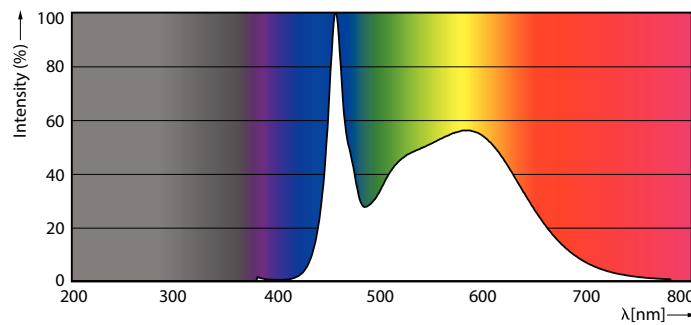
Dimensional drawing



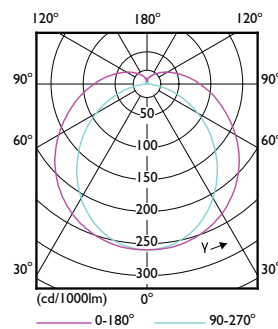
Master LEDTube 1200mm 20.5W 850 T8 W JP

Product	D1	D2	A1	A2	A3
Master LEDTube 1200mm 20.5W 850 T8 W JP	25.8 mm	27.8 mm	1198.1 mm	1205.2 mm	1212.3 mm

Photometric data



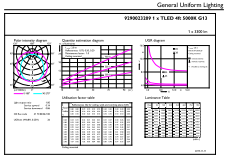
LEDtube MAS GM 20,5W G13 3300lm 850-POC



LEDtube MAS GM 8W G13 1050lm-LDD

MASTER LEDtube EM/Mains T8

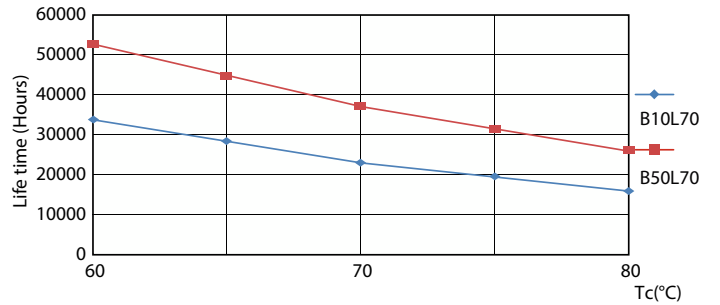
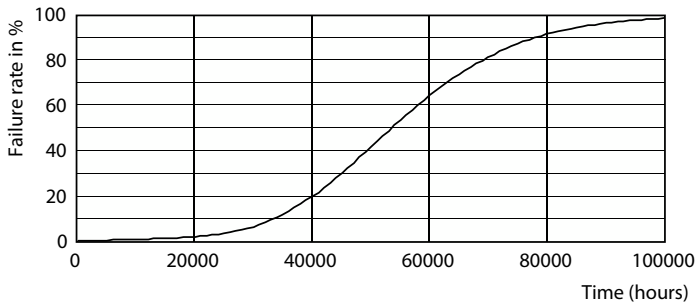
Photometric data



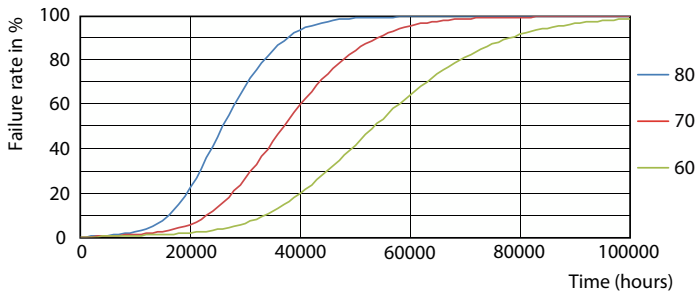
© 2022 Philips Lighting B.V. Page 1/1

LEDtube MAS GM 20,5W G13 3300lm 850-GUL

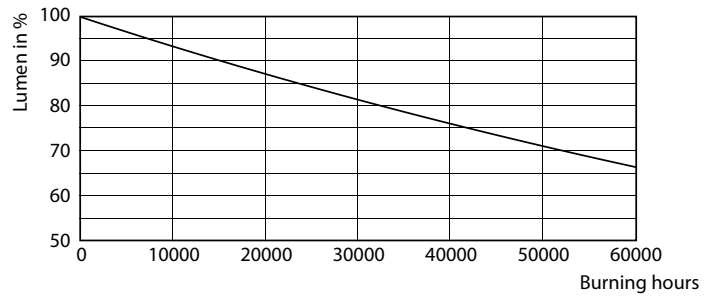
Lifetime



Life Expectancy Diagram



LEDtube 50K 6080 LifetimeVsTc-LED

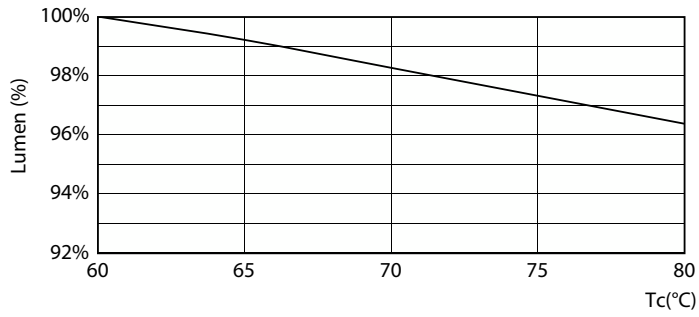


LEDtube 50K 6080 FailureRate-LED

Lumen Maintenance Diagram

MASTER LEDtube EM/Mains T8

Lifetime



LEDtube MAS GM 20,5W 50K LumenVsTc-LMP

