

MasterConnect LEDtube EM/mains T8



MasterConnect LEDtube IA 1200mm UO 16W840 T8

Introducing MasterConnect LEDtubes - smart retrofit LED T8 lamps that give you an easy and seamless way to upgrade to connected lighting. Simply set up with an intuitive app and MasterConnect LED tube lighting can be programmed to maximize energy savings, while providing wireless and automated light for your comfort and convenience. What's more, it is fully scalable and upgradable. If you want to enjoy additional benefits such as remote control or a management dashboard, you can simply keep the lamps you currently have installed and add a gateway to experience all the advantages of a cloud-based system. There's no better way to take lighting solutions to the next level.

Product data

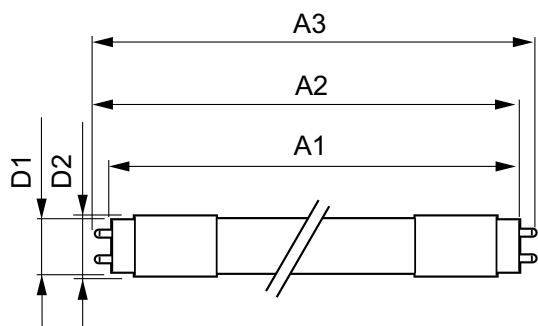
General information		Luminous Efficacy (rated) (Nom)	
Cap-Base	G13 [Medium Bi-Pin Fluorescent]		156.00 lm/W
EU RoHS compliant	Yes	Color Consistency	<6
Nominal Lifetime (Nom)	60000 h	Color Rendering Index (Nom)	83
Switching Cycle	200000X	LLMF At End Of Nominal Lifetime (Nom)	70 %
Technical Type	16-36W	Operating and electrical	
Flux measurement reference	Sphere	Input Frequency	50 to 60 Hz
Light technical		Power (Nom)	16 W
Color Code	840 [CCT of 4000K]	Lamp Current (Max)	76 mA
Beam Angle (Nom)	160 °	Lamp Current (Min)	69 mA
Luminous Flux (Nom)	2500 lm	Starting Time (Nom)	0.5 s
Color Designation	Cool White (CW)	Warm Up Time to 60% Light (Nom)	0.5 s
Correlated Color Temperature (Nom)	4000 K	Power Factor (Nom)	0.9

MasterConnect LEDtube EM/mains T8

Voltage (Nom)	220-240 V
Temperature	
T-Ambient (Max)	45 °C
T-Ambient (Min)	-20 °C
T-Storage (Max)	65 °C
T-Storage (Min)	-40 °C
T-Case Maximum (Nom)	50 °C
Controls and dimming	
Dimmable	Wireless Dim
Mechanical and housing	
Product Length	1200 mm
Bulb Shape	Tube, double-ended
Approval and application	
Energy Efficiency Class	D

Energy Saving Product	Yes
Approval Marks	RoHS compliance TUV CE marking KEMA Keur certificate
Energy Consumption kWh/1000 h	16 kWh
EPREL Registration Number	406200
Product data	
Full product code	871869966970600
Order product name	MasterConnect LEDtube IA 1200mm UO 16W840 T8
EAN/UPC - Product	8718699669706
Order code	929002210402
Numerator - Quantity Per Pack	1
Numerator - Packs per outer box	10
Material Nr. (12NC)	929002210402
Net Weight (Piece)	0.320 kg

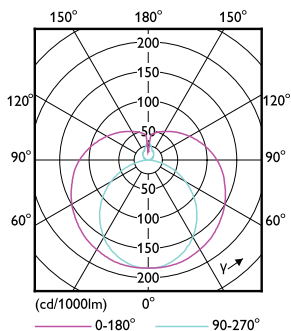
Dimensional drawing



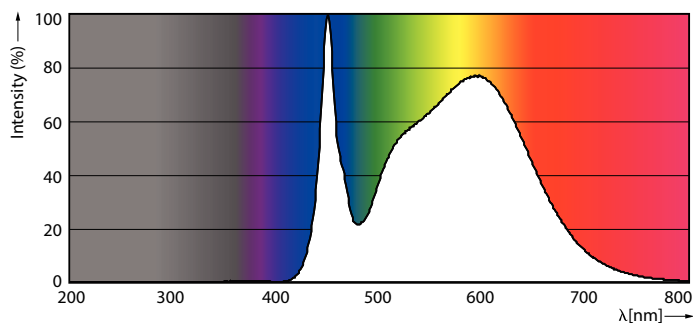
MasterConnect LEDtube IA 1200mm UO 16W840 T8

Product	D1	D2	A1	A2	A3
MasterConnect LEDtube IA 1200mm UO 16W840 T8	25.8 mm	28 mm	1198.2 mm	1205.3 mm	1212.4 mm

Photometric data



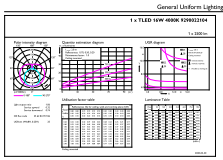
MC LEDtube 16W G13 2500lm



MC LEDtube G13 840

MasterConnect LEDtube EM/mains T8

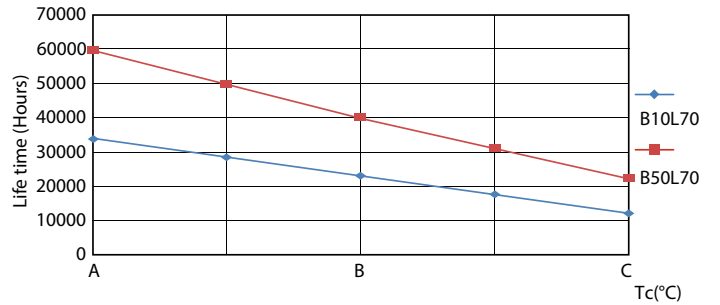
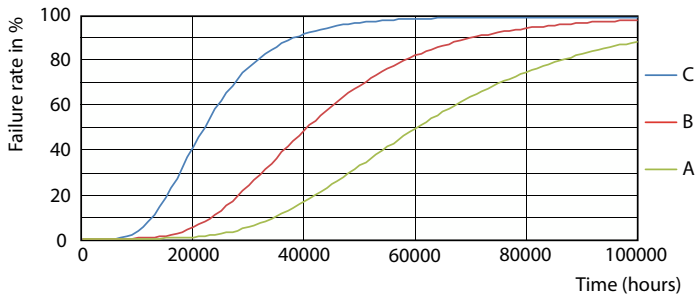
Photometric data



© 2022 Philips Lighting B.V. Page 10

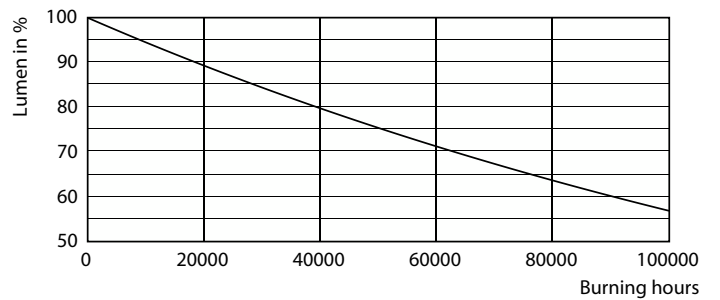
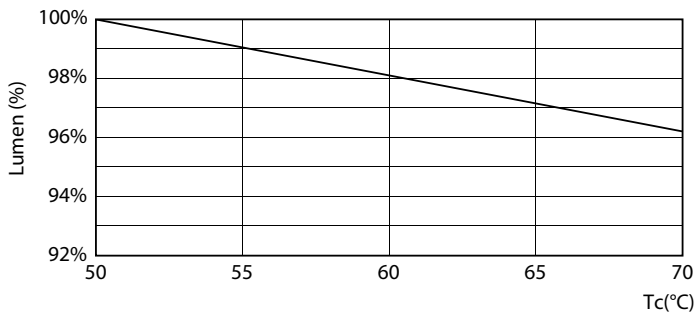
MC LEDtube 16W G13 2500lm 840

Lifetime



FailureRate

LifetimeVsTc

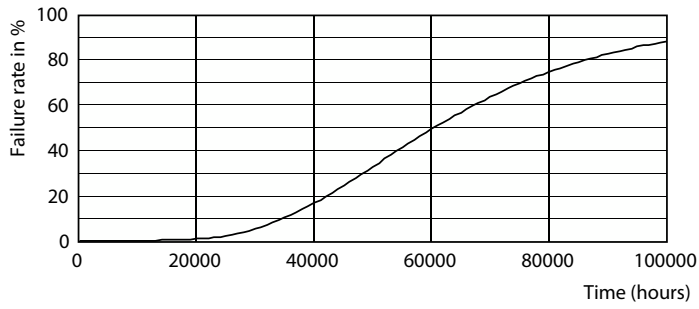


MC LEDtube 16W 60K LumenVsTc

Lumen Maintenance Diagram

MasterConnect LEDtube EM/mains T8

Lifetime



Life Expectancy Diagram

