



T8

8.5T8/MAS/36-835/IF13/P/DIM 10/1

Our TLEDs are available in InstantFit (Type A / Type C) or MainsFit (Ballast bypass / Type B) versions. The InstantFit lamps work on a broad variety of ballasts and LED drivers. Only InstantFit has over 15,000 lamp & ballast combinations delivering even light output, energy savings and a long lifetime. Our MainsFit products feature a double-ended design, simplifying installation while a proprietary safety circuit minimizes a shock risk. Lamp sizes range from 2-foot to 8-foot and U-bend with a variety of lumen outputs.

Product data

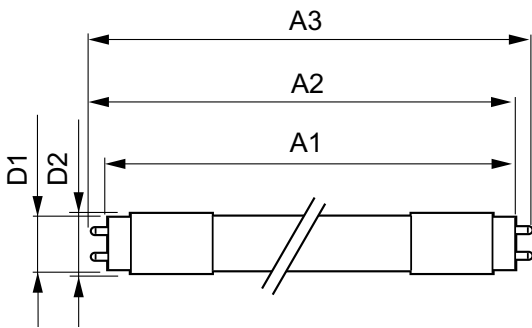
General information		Starting Time (Nom)	
Cap-Base	G13 [Medium Bi-Pin Fluorescent]		0.5 s
EU RoHS compliant	Yes	Warm Up Time to 60% Light (Nom)	0.5 s
Nominal Lifetime (Nom)	70000 h	UL Type	Type A - works on ballast
Switching Cycle	50000X	Power Factor (Nom)	0.9
		Voltage (Nom)	120-277, 347 V
Light technical		Temperature	
Color Code	835 [CCT of 3500K]	T-Ambient (Max)	45 °C
Beam Angle (Nom)	180 °	T-Ambient (Min)	-20 °C
Luminous Flux (Nom)	1350 lm	T-Storage (Max)	65 °C
Color Designation	White (WH)	T-Storage (Min)	-40 °C
Correlated Color Temperature (Nom)	3500 K	T-Case Maximum (Nom)	50 °C
Luminous Efficacy (rated) (Nom)	152.00 lm/W		
Color Consistency	<6	Controls and dimming	
Color Rendering Index (Nom)	80	Dimmable	Yes
LLMF At End Of Nominal Lifetime (Nom)	70 %		
Operating and electrical		Mechanical and housing	
Input Frequency	20K to 120K Hz	Bulb Material	Plastic
Power (Nom)	8.5 W	Product Length	900 mm

T8

Bulb Shape	Tube, double-ended
Approval and application	
Energy Saving Product	Yes
Approval Marks	RoHS compliance UL certificate DLC compliance
Energy Consumption kWh/1000 h	- kWh
Energy Certifications	DLC Standard
Product data	
Order product name	8.5T8/MAS/36-835/IF13/P/DIM 10/1

EAN/UPC - Product	046677539863
Order code	929001967904
Numerator - Quantity Per Pack	1
Numerator - Packs per outer box	10
Material Nr. (12NC)	929001967904
Net Weight (Piece)	0.160 kg

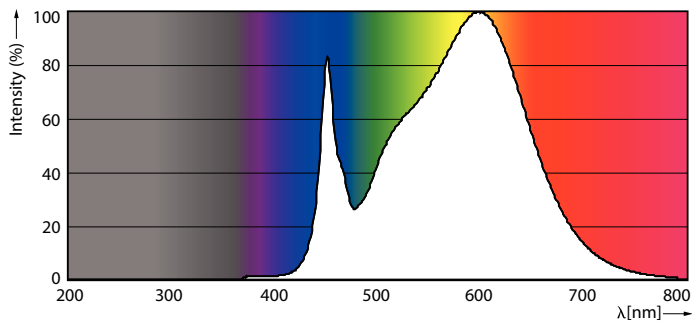
Dimensional drawing



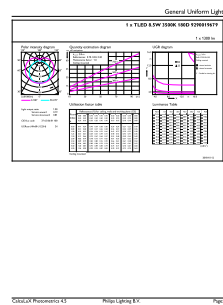
8.5T8/MAS/36-835/IF13/P/DIM 10/1

Product	D1	D2	A1	A2	A3
8.5T8/MAS/36-835/ IF13/P/DIM 10/1	25.7 mm	26.3 mm	893.4 mm	900.5 mm	907.6 mm

Photometric data

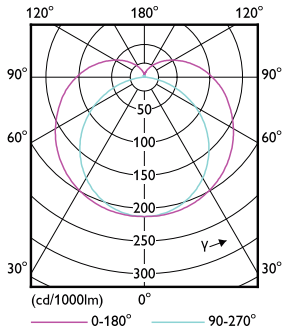


G13 3500K 1300lm



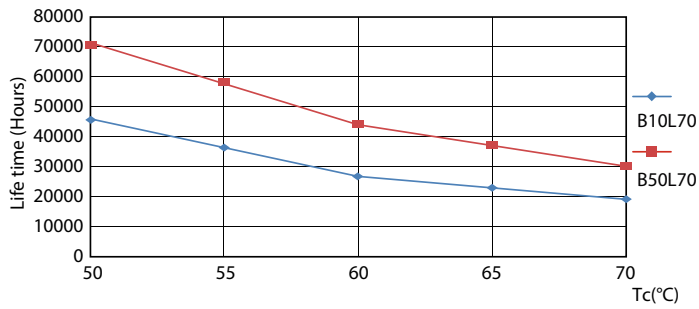
G13 3500K 1300lm

Photometric data

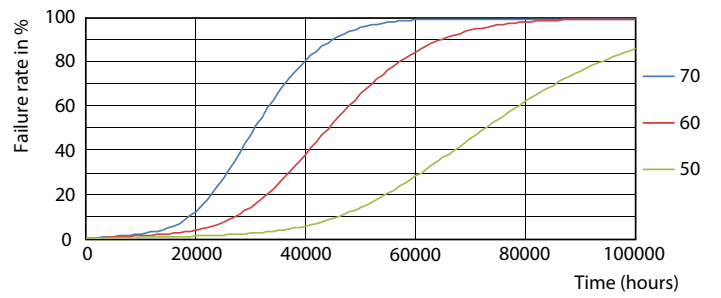


G13 4000K

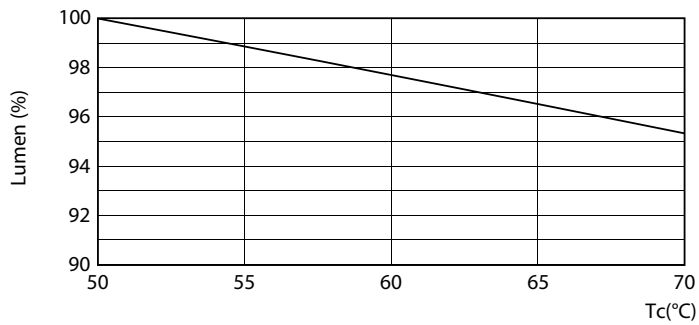
Lifetime



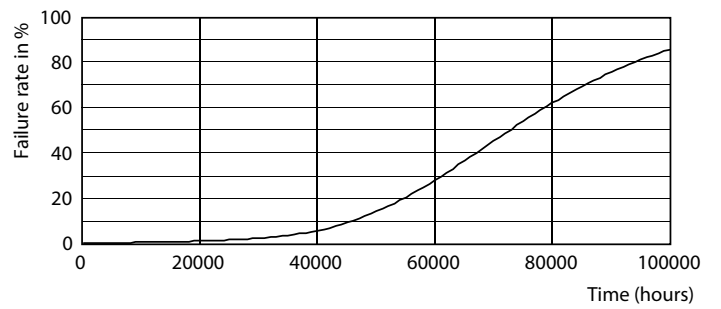
G13 4000K



G13 4000K



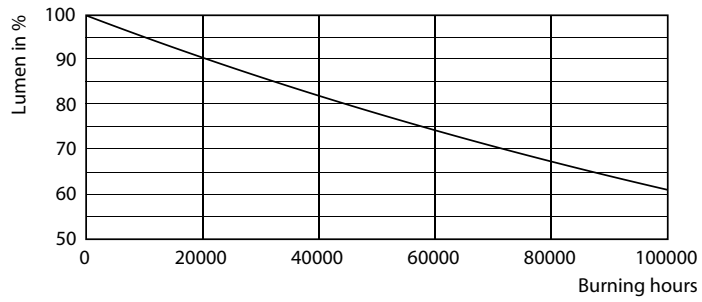
G13 4000K



G13 4000K

T8

Lifetime



G13 4000K

