

# T8

## 15.5T8-6U/COR/24-840/MF21/G 10/1

Our TLEDs are available in InstantFit (Type A / Type C) or MainsFit (Ballast bypass / Type B) versions. The InstantFit lamps work on a broad variety of ballasts and LED drivers. Only InstantFit has over 15,000 lamp & ballast combinations delivering even light output, energy savings and a long lifetime. Our MainsFit products feature a double-ended design, simplifying installation while a proprietary safety circuit minimizes a shock risk. Lamp sizes range from 2-foot to 8-foot and U-bend with a variety of lumen outputs.

### Product data

General information	
Cap-Base	2G13 [ 2G13]
EU RoHS compliant	Yes
Nominal Lifetime (Nom)	50000 h
Switching Cycle	50000X
Light technical	
Color Code	840 [ CCT of 4000K]
Beam Angle (Nom)	180 °
Luminous Flux (Nom)	2100 lm
Color Designation	Cool White (CW)
Correlated Color Temperature (Nom)	4000 K
Luminous Efficacy (rated) (Nom)	135.00 lm/W
Color Consistency	<6
Color Rendering Index (Nom)	82
LLMF At End Of Nominal Lifetime (Nom)	70 %
Operating and electrical	
Input Frequency	50 to 60 Hz
Power (Nom)	15.5 W

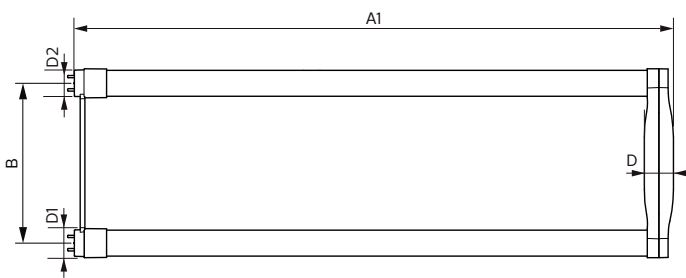
Lamp Current (Max)	140 mA
Lamp Current (Min)	63 mA
Starting Time (Nom)	0.9 s
Warm Up Time to 60% Light (Nom)	0.9 s
UL Type	Type B - bypass the ballast
Power Factor (Nom)	0.9
Voltage (Nom)	120-277 V
Temperature	
T-Ambient (Max)	45 °C
T-Ambient (Min)	-20 °C
T-Storage (Max)	65 °C
T-Storage (Min)	-40 °C
T-Case Maximum (Nom)	51 °C
Controls and dimming	
Dimmable	No
Mechanical and housing	
Bulb Material	Glass

# T8

Product Length	600 mm
Bulb Shape	Tube, double-ended
<b>Approval and application</b>	
Energy Saving Product	Yes
Approval Marks	UL certificate RoHS compliance DLC compliance
Energy Consumption kWh/1000 h	- kWh
Energy Certifications	DLC Standard

<b>Product data</b>	
Order product name	15.5T8-6U/COR/24-840/MF21/G 10/1
EAN/UPC - Product	046677535551
Order code	929001934804
Numerator - Quantity Per Pack	1
Numerator - Packs per outer box	10
Material Nr. (12NC)	929001934804
Net Weight (Piece)	0.230 kg

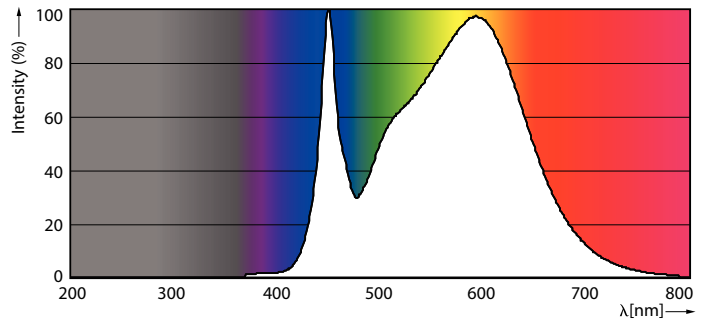
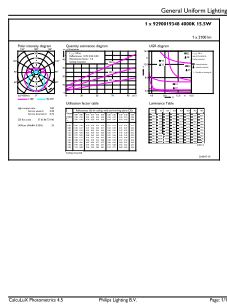
## Dimensional drawing



Product	D1	D2	B	A1	D
15.5T8-6U/COR/24-840/MF21/G 10/1	25.7 mm	28.1 mm	152 mm	570 mm	27.9 mm

15.5T8-6U/COR/24-840/MF21/G 10/1

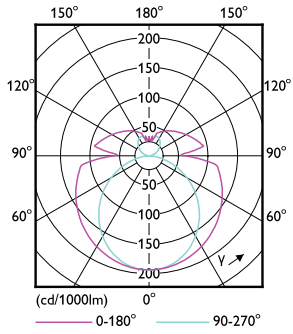
## Photometric data



15-5W 2G13 840 4000K

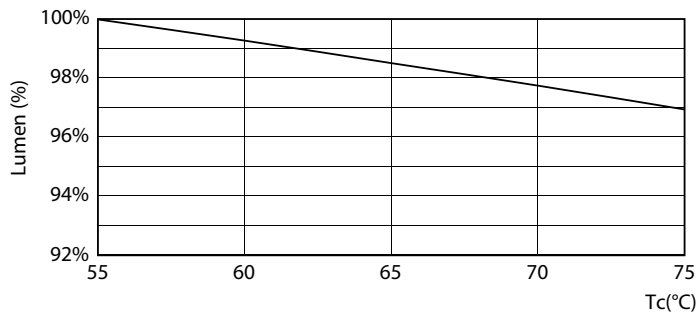
15-5W 2G13

Photometric data

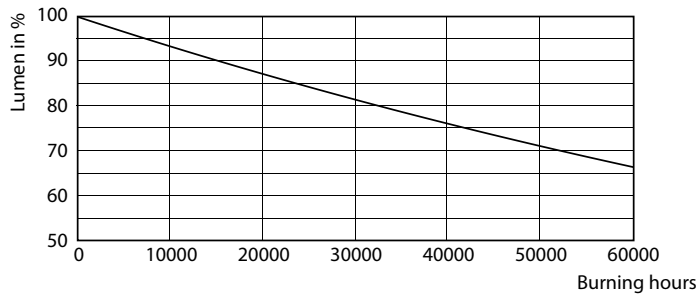


15-5W 2G13 830 3000K

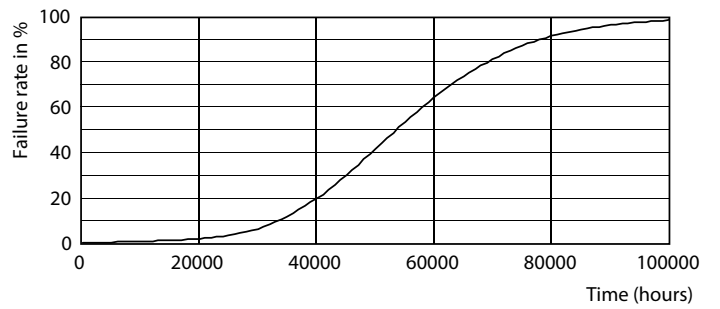
Lifetime



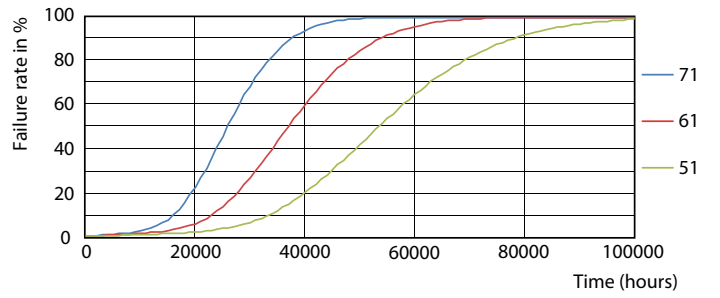
15-5W 2G13



8.5W G13



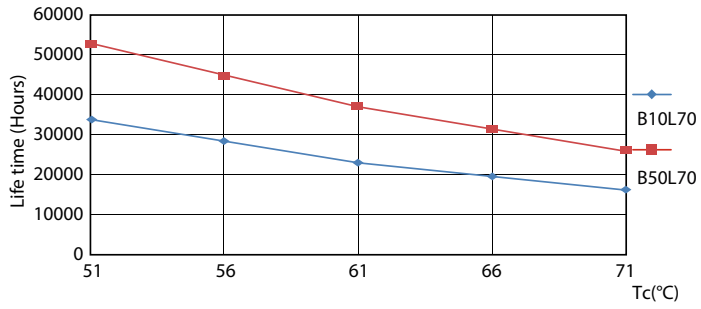
8.5W G13



15-5W 2G13

# T8

## Lifetime



15-5W 2G13

