



# MASTER LEDtube EM/ Mains T8



## MASTER LEDtube 1200mm HO 12.5W 865 T8

The Philips MASTER LEDtube integrates a LED light source into a traditional fluorescent form factor. Its unique design creates a perfectly uniform visual appearance, which cannot be distinguished from traditional fluorescent. These T8 LED tubes are the right choice for absolute performance and are designed to stand up to everyday conditions. Unparalleled savings thanks to low energy consumption and an exceptionally long lifetime ensure this tube masters every demanding application.

### Warnings and Safety

- NOTE: The overall energy efficiency and light distribution of any installation that uses these lamps will be determined by the design of the installation.

### Product data

General information	
Cap-Base	G13 ROT (Rotating) [ Medium Bi-Pin Fluorescent]
EU RoHS compliant	Yes
Nominal Lifetime (Nom)	75000 h
Switching Cycle	200000X
Flux measurement reference	Sphere
Light technical	
Color Code	865 [ CCT of 6500K]
Beam Angle (Nom)	160 °
Luminous Flux (Nom)	2100 lm
Color Designation	Cool Daylight
Correlated Color Temperature (Nom)	6500 K

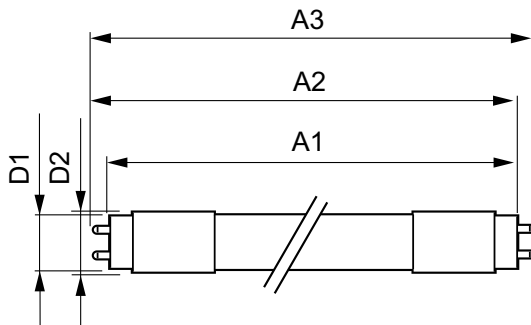
Luminous Efficacy (rated) (Nom)	168.00 lm/W
Color Consistency	<6
Color Rendering Index (Nom)	80
LLMF At End Of Nominal Lifetime (Nom)	70 %
Operating and electrical	
Input Frequency	50 to 60 Hz
Power (Nom)	12.5 W
Lamp Current (Max)	63 mA
Lamp Current (Min)	52 mA
Starting Time (Nom)	0.5 s
Warm Up Time to 60% Light (Nom)	0.5 s
Power Factor (Nom)	0.9

# MASTER LEDtube EM/Mains T8

Voltage (Nom)	220-240 V
<b>Temperature</b>	
T-Ambient (Max)	45 °C
T-Ambient (Min)	-20 °C
T-Storage (Max)	65 °C
T-Storage (Min)	-40 °C
T-Case Maximum (Nom)	50 °C
<b>Controls and dimming</b>	
Dimmable	No
<b>Mechanical and housing</b>	
Bulb Finish	Frosted
Bulb Material	Plastic
Product Length	1200 mm
Bulb Shape	Tube, double-ended
<b>Approval and application</b>	
Energy Efficiency Class	C

Energy Saving Product	Yes
Approval Marks	RoHS compliance TUV CE marking KEMA Keur certificate
Energy Consumption kWh/1000 h	13 kWh
EPREL Registration Number	403592
<b>Product data</b>	
Full product code	871869959239400
Order product name	MASTER LEDtube 1200mm HO 12.5W 865 T8
EAN/UPC - Product	8718699592394
Order code	929001922802
Numerator - Quantity Per Pack	1
Numerator - Packs per outer box	10
Material Nr. (12NC)	929001922802
Net Weight (Piece)	0.230 kg

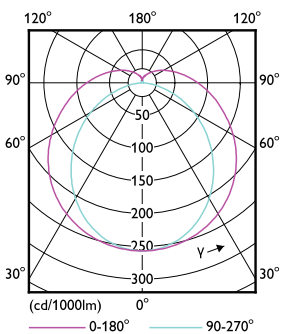
## Dimensional drawing



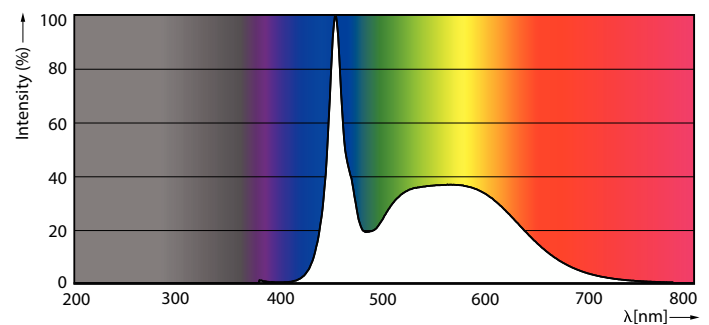
MASTER LEDtube 1200mm HO 12.5W 865 T8

Product	D1	D2	A1	A2	A3
MASTER LEDtube 1200mm HO 12.5W 865 T8	25.8 mm	28 mm	1198.2 mm	1205.3 mm	1212.4 mm

## Photometric data



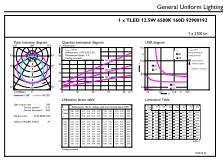
Light Distribution Diagram



Spectral Power Distribution Colour

# MASTER LEDtube EM/Mains T8

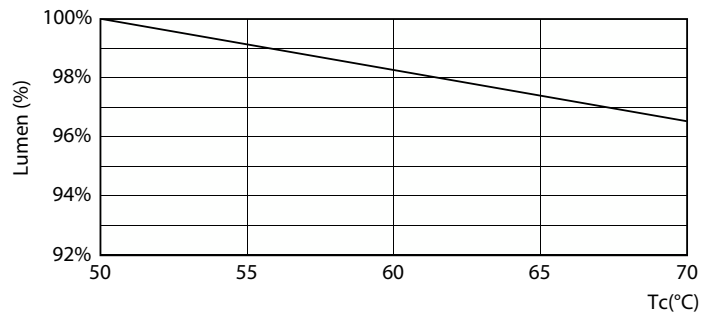
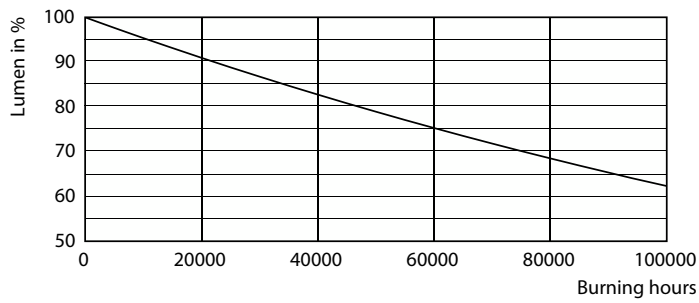
## Photometric data



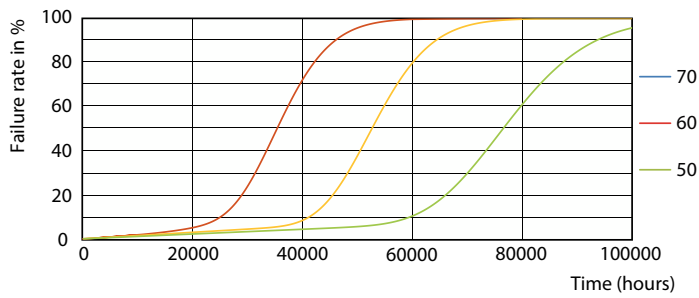
© 2022 Philips Lighting B.V. Page 10

### General uniform lighting

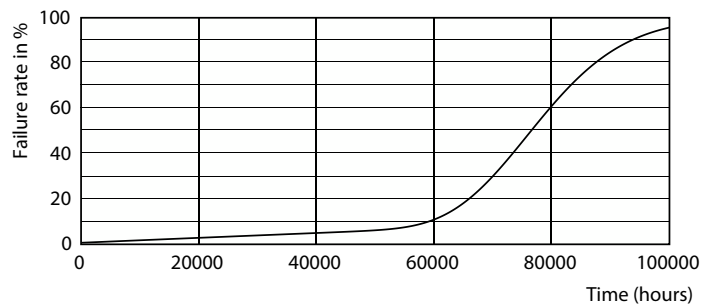
## Lifetime



### Lumen Maintenance Diagram



### LumenVsTc

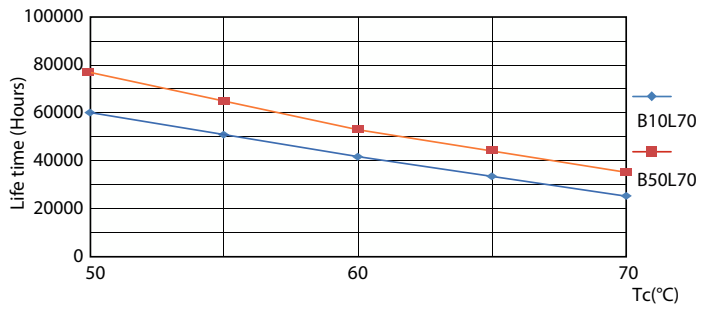


### FailureRate

### Life Expectancy Diagram

# MASTER LEDtube EM/Mains T8

## Lifetime



LifetimeVsTc

