



MASTER LEDtube Mains T5

MASTER LEDtube 1200mm HO 26W 840 T5

The new Philips Master LEDtube Mains T5 brings simplicity to your lighting project. You don't need to pay attention to the driver technology anymore. Thanks to a unique design, Philips MASTER LEDtube Mains T5 installs in luminaires operating on mains power connection. So simple to operate! . Perfectly safe, reliable & easy to install, the Philips MASTER LEDtube Mains T5 is the ideal alternative to standard fluorescent tubes to maximise value over lifetime with high energy savings and lower maintenance costs.

Product data

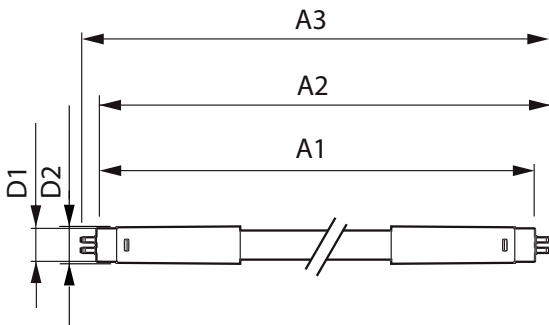
General information		Operating and electrical	
Cap base	G5 [G5]	Line Frequency	50 to 60 Hz
Nominal lifetime	50,000 h	Input frequency	50 to 60 Hz
Switching Cycle	200,000	Power Consumption	26 W
Lighting Technology	LED	Lamp current (nom.)	125 mA
Flux measurement reference	Sphere	Starting time (nom.)	0.5 s
		Warm-up time to 60% light	0.5 s
		Power Factor (Fraction)	0.92
		Voltage (nom.)	220-240 V
Light technical		Temperature	
Colour Code	840 [CCT of 4000K]	T-Case maximum (nom.)	70 °C
Beam angle (nom.)	200 degree(s)		
Luminous Flux	3,900 lm	Controls and dimming	
Colour designation	Cool White (CW)	Dimmable	No
Correlated Colour Temperature	4000 K		
Luminous Efficacy (rated) (Nom)	150 lm/W	Mechanical and housing	
Colour consistency	<6	Lamp Finish	Frosted
Colour rendering index (CRI)	80		
LLMF at end of nominal lifetime (nom.)	70 %		

MASTER LEDtube Mains T5

Bulb material	Glass
Product length	1,200 mm
Bulb shape	Tube, double-ended
Approval and application	
Energy-saving product	Yes
Approval marks	RoHS compliance CE marking KEMA Keur certificate
Energy consumption kWh/1,000 hours	26 kWh
EPREL registration number	652,789
CE mark	Yes
EU RoHS compliant	Yes

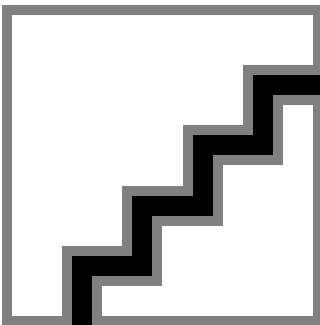
Product data	
Full EOC	871869681923400
Order product name	MAS LEDtube 1200mm HO 26W 840 T5
Order code	81923400
SAP numerator – quantity per pack	1
Numerator – packs per outer box	10
Material number (12NC)	929001908602
Net weight	0.215 kg
Full product name	MASTER LEDtube 1200mm HO 26W 840 T5
EAN/UPC - Case	8718696819241

Dimensional drawing

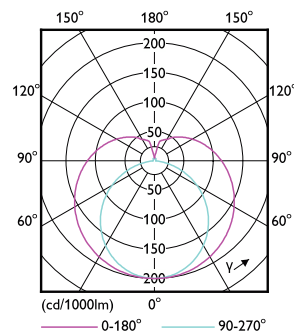


Product	D1	D2	A1	A2	A3
MAS LEDtube 1200mm HO 26W 840 T5	15 mm	16.9 mm	1,149 mm	1,156.1 mm	1,163.2 mm

Photometric data



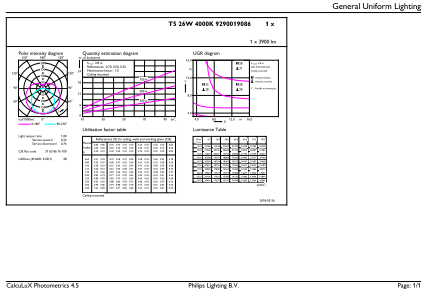
Spectral Power Distribution Colour - MAS LEDtube 1200mm HO 26W 840 T5



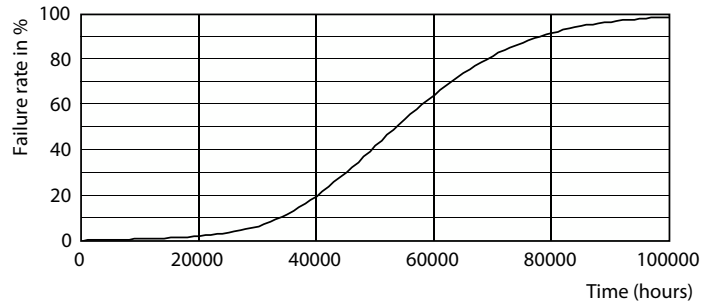
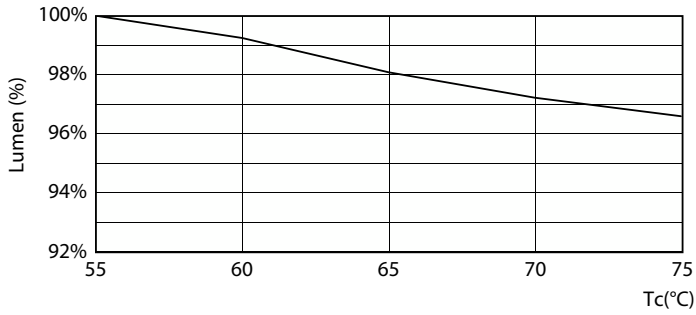
Light Distribution Diagram - MAS LEDtube 1200mm HO 26W 840 T5

MASTER LEDtube Mains T5

Photometric data

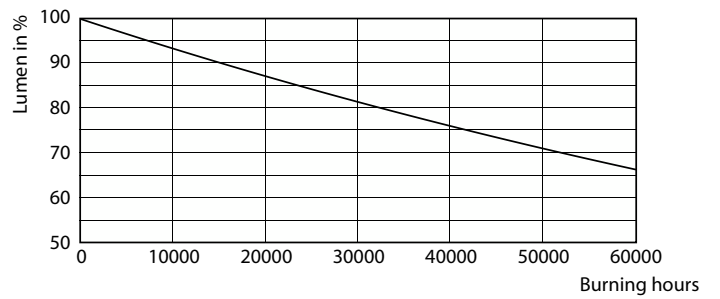
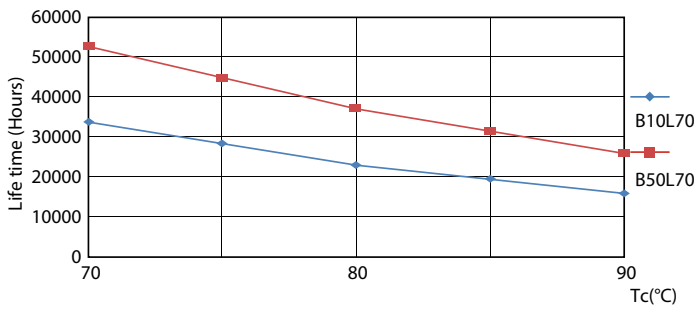


Lifetime



Lumen Maintenance Diagram - MAS LEDtube 1200mm HO 26W 840 T5

Life Expectancy Diagram - MAS LEDtube 1200mm HO 26W 840 T5

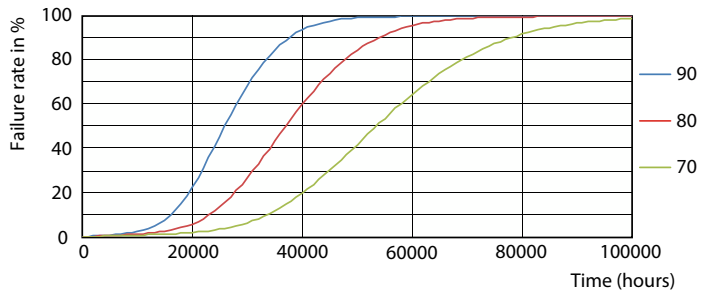


Life Expectancy Diagram - MAS LEDtube 1200mm HO 26W 840 T5

Lumen Maintenance Diagram - MAS LEDtube 1200mm HO 26W 840 T5

MASTER LEDtube Mains T5

Lifetime



Life Expectancy Diagram - MAS LEDtube 1200mm HO 26W 840 T5

