



MASTER LEDtube Mains T5



MASTER LEDtube 1200mm HO 26W 830 T5

The new Philips Master LEDtube Mains T5 brings simplicity to your lighting project. You don't need to pay attention to the driver technology anymore. Thanks to a unique design, Philips MASTER LEDtube Mains T5 installs in luminaires operating on mains power connection. So simple to operate! Perfectly safe, reliable & easy to install Philips MASTER LEDtube Mains T5 is the ideal alternative to standard fluorescent tubes to maximize value over lifetime with high energy saving and lower maintenance costs.

Product data

General information	
Cap-Base	G5 [G5]
EU RoHS compliant	Yes
Nominal Lifetime (Nom)	50000 h
Switching Cycle	200000X
Flux measurement reference	Sphere

Light technical	
Color Code	830 [CCT of 3000K]
Beam Angle (Nom)	200 °
Luminous Flux (Nom)	3600 lm
Color Designation	White (WH)
Correlated Color Temperature (Nom)	3000 K
Luminous Efficacy (rated) (Nom)	138.00 lm/W
Color Consistency	<6
Color Rendering Index (Nom)	80
LLMF At End Of Nominal Lifetime (Nom)	70 %

Operating and electrical	
Input Frequency	50 to 60 Hz
Power (Nom)	26 W
Lamp Current (Nom)	125 mA
Starting Time (Nom)	0.5 s
Warm Up Time to 60% Light (Nom)	0.5 s
Power Factor (Nom)	0.92
Voltage (Nom)	220-240 V

Temperature	
T-Ambient (Max)	45 °C
T-Ambient (Min)	-20 °C
T-Storage (Max)	65 °C
T-Storage (Min)	-40 °C
T-Case Maximum (Nom)	70 °C

MASTER LEDtube Mains T5

Controls and dimming

Dimmable	No
----------	----

Mechanical and housing

Bulb Finish	Frosted
Bulb Material	Glass
Product Length	1200 mm
Bulb Shape	Tube, double-ended

Approval and application

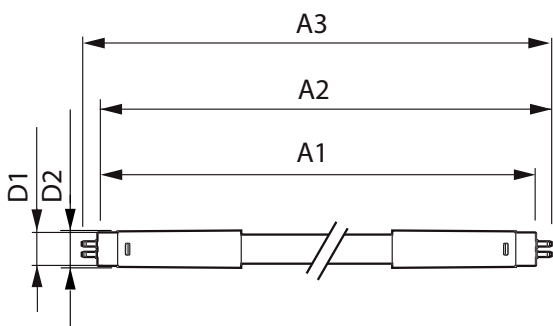
Energy Efficiency Class	D
Energy Saving Product	Yes
Approval Marks	RoHS compliance CE marking KEMA Keur certificate

Energy Consumption kWh/1000 h	26 kWh
EPREL Registration Number	652790

Product data

Full product code	871869681921000
Order product name	MASTER LEDtube 1200mm HO 26W 830 T5
EAN/UPC - Product	8718696819210
Order code	929001908502
Numerator - Quantity Per Pack	1
Numerator - Packs per outer box	10
Material Nr. (12NC)	929001908502
Net Weight (Piece)	0.215 kg

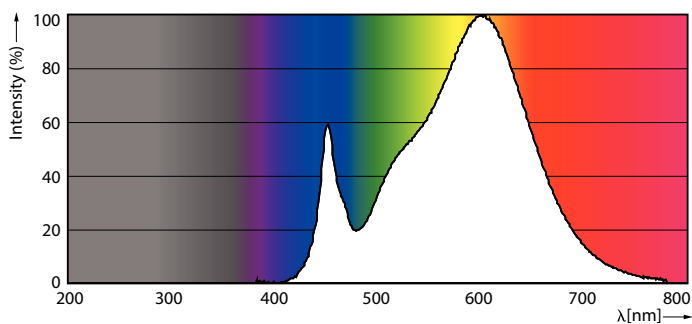
Dimensional drawing



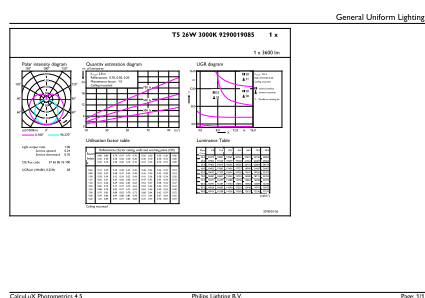
MASTER LEDtube 1200mm HO 26W 830 T5

Product	D1	D2	A1	A2	A3
MASTER LEDtube 1200mm HO 26W 830 T5	15 mm	16.9 mm	1149 mm	1156.1 mm	1163.2 mm

Photometric data



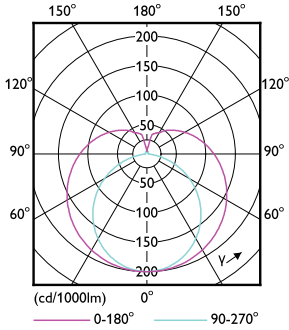
26W G5



26W G5 830 3000K

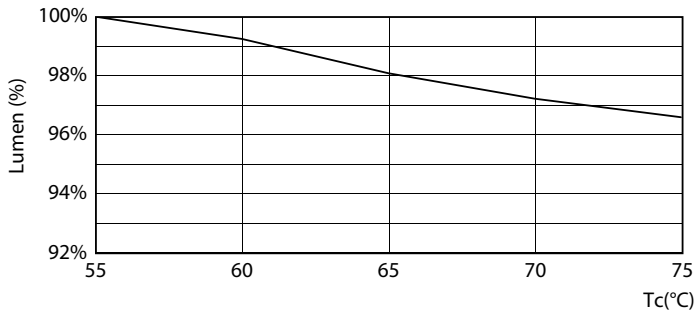
MASTER LEDtube Mains T5

Photometric data

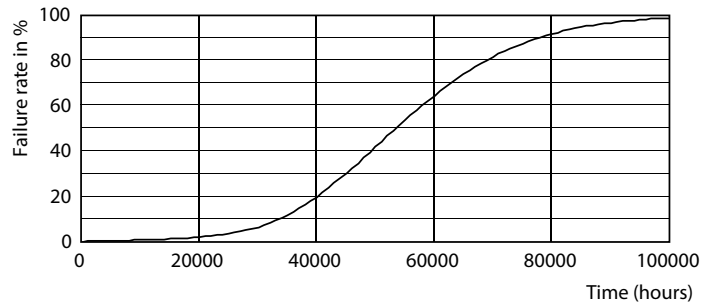


26W G5 830 3000K

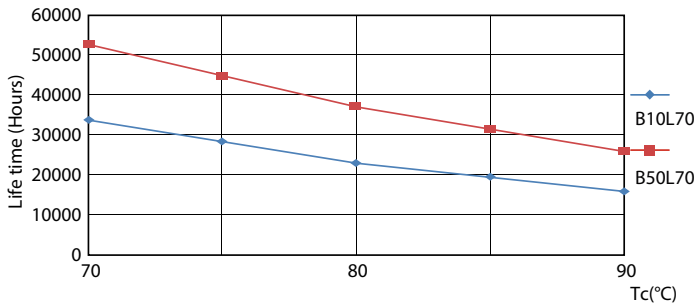
Lifetime



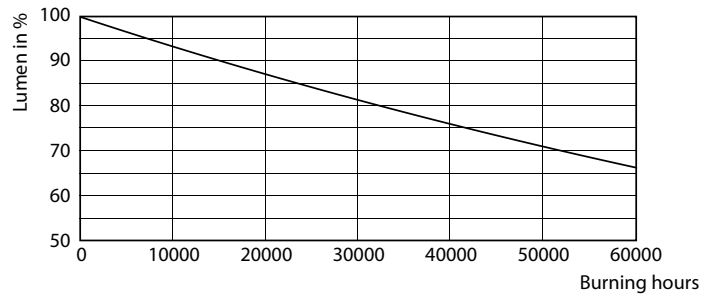
LEDtube MAS 1 26W 50K Lumen-VsTc-LMP



26W G5



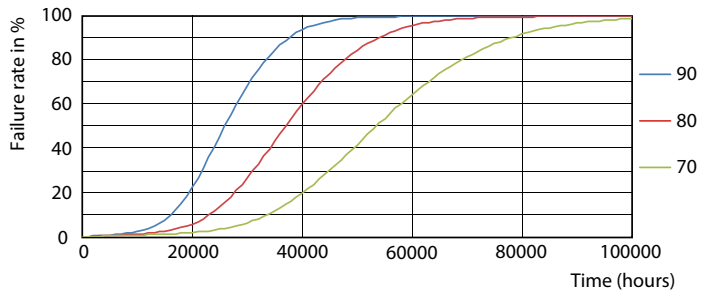
LEDtube MAS 1 26W 50K LifetimeVsTc-LED



26W G5

MASTER LEDtube Mains T5

Lifetime



LEDtube MAS 1 26W 50K FailureRate-LED

