



CorePro LEDtube EM/ Mains T8



CorePro LEDtube 1500mm HO 24W 865 T8

Philips CorePro LEDtubes are the quick and easy way to replace T8 fluorescent or other LED tubes with a fast pay back time. Not only does the Core range of LEDtubes require a low initial investment, but LED energy efficiency also delivers instant savings that you can bank on over a long and reliable lifetime. Plus, with the same lamp size and light distribution as fluorescent alternatives, you'll never know the difference. There are two ways to install these LED tubes: Rewire your existing fluorescent-based luminaires so the CorePro LEDtubes work directly on the Mains. Or simply change the fluorescent starter to an LED starter that can be used with your Electromagnetic ballasts.

Warnings and Safety

- NOTE: The overall energy efficiency and light distribution of any installation that uses these lamps will be determined by the design of the installation.
- Installation must be done according to the installation diagrams provided with the lamp or available online. Installation must be done by a certified professional.

Product data

| General information | | | |
|----------------------------|----------------------------------|---------------------------------------|---------------|
| Cap-Base | G13 [Medium Bi-Pin Fluorescent] | Beam Angle (Nom) | 240 ° |
| EU RoHS compliant | Yes | Luminous Flux (Nom) | 2700 lm |
| Nominal Lifetime (Nom) | 30000 h | Color Designation | Cool Daylight |
| Switching Cycle | 200000X | Correlated Color Temperature (Nom) | 6500 K |
| Technical Type | LEDTECH-LOV | Luminous Efficacy (rated) (Nom) | 112.00 lm/W |
| Flux measurement reference | Sphere | Color Consistency | <6 |
| | | Color Rendering Index (Nom) | 80 |
| | | LLMF At End Of Nominal Lifetime (Nom) | 70 % |
| Light technical | | | |
| Color Code | 865 [CCT of 6500K] | | |

CorePro LEDtube EM/Mains T8

| Operating and electrical | |
|---------------------------------|-------------|
| Input Frequency | 50 to 60 Hz |
| Power (Nom) | 24 W |
| Lamp Current (Nom) | 120 mA |
| Starting Time (Nom) | 0.5 s |
| Warm Up Time to 60% Light (Nom) | 0.5 s |
| Power Factor (Nom) | 0.9 |
| Voltage (Nom) | 220-240 V |

| Temperature | |
|----------------------|--------|
| T-Ambient (Max) | 45 °C |
| T-Ambient (Min) | -20 °C |
| T-Storage (Max) | 65 °C |
| T-Storage (Min) | -40 °C |
| T-Case Maximum (Nom) | 55 °C |

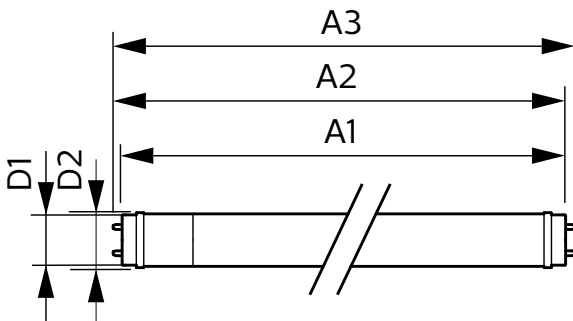
| Controls and dimming | |
|----------------------|----|
| Dimmable | No |

| Mechanical and housing | |
|------------------------|---------|
| Bulb Finish | Frosted |
| Bulb Material | Glass |

| Product Length | 1500 mm |
|-------------------------------|--|
| Bulb Shape | Tube, double-ended |
| Approval and application | |
| Energy Efficiency Class | E |
| Energy Saving Product | Yes |
| Approval Marks | RoHS compliance CE marking KEMA Keur certificate |
| Energy Consumption kWh/1000 h | 24 kWh |
| EPREL Registration Number | 491844 |

| Product data | |
|---------------------------------|--------------------------------------|
| Full product code | 871869680615900 |
| Order product name | CorePro LEDtube 1500mm HO 24W 865 T8 |
| EAN/UPC - Product | 8718696806159 |
| Order code | 929001875002 |
| Numerator - Quantity Per Pack | 1 |
| Numerator - Packs per outer box | 10 |
| Material Nr. (12NC) | 929001875002 |
| Net Weight (Piece) | 0.270 kg |

Dimensional drawing

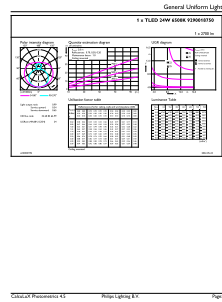
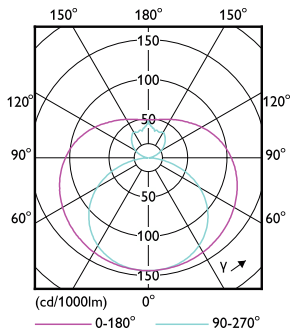


CorePro LEDtube 1500mm HO 24W 865 T8

| Product | D1 | D2 | A1 | A2 | A3 |
|--------------------------------------|---------|-------|---------|-----------|-----------|
| CorePro LEDtube 1500mm HO 24W 865 T8 | 25.7 mm | 28 mm | 1500 mm | 1507.1 mm | 1514.2 mm |

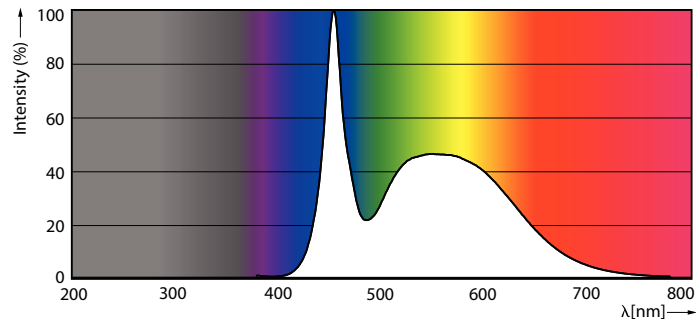
CorePro LEDtube EM/Mains T8

Photometric data



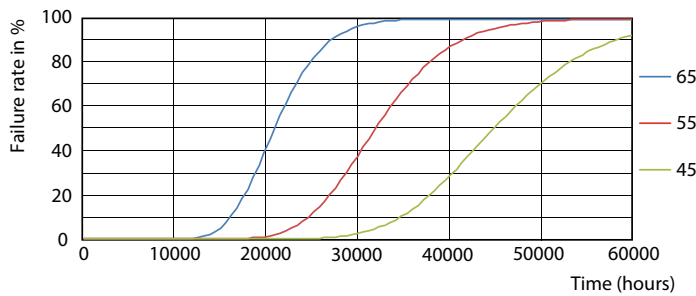
Light Distribution Diagram

General uniform lighting

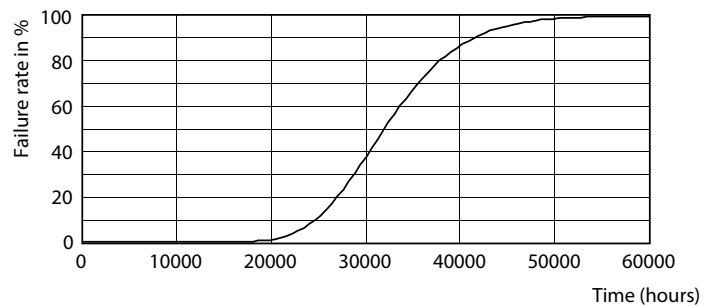


Spectral Power Distribution Colour

Lifetime



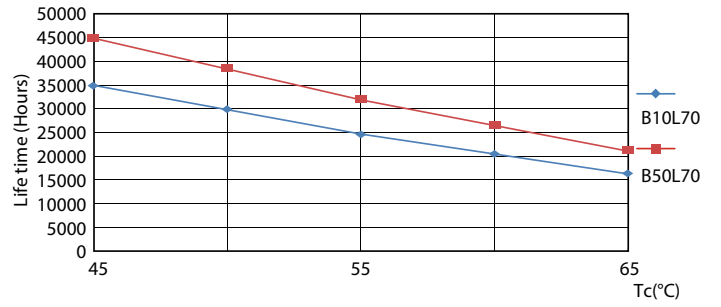
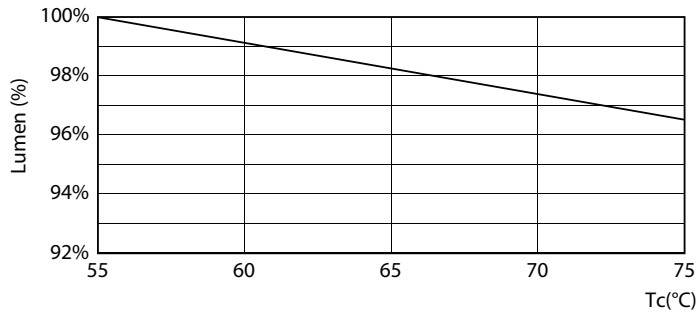
FailureRate



Life Expectancy Diagram

CorePro LEDtube EM/Mains T8

Lifetime



LumenVsTc

LifetimeVsTc



Lumen Maintenance Diagram

