



CorePro LEDtube EM/ Mains T8



CorePro LEDtube 1200mm HO 18W 865 T8

Philips CorePro LEDtubes are the quick and easy way to replace T8 fluorescent or other LED tubes with a fast pay back time. Not only does the Core range of LEDtubes require a low initial investment, but LED energy efficiency also delivers instant savings that you can bank on over a long and reliable lifetime. Plus, with the same lamp size and light distribution as fluorescent alternatives, you'll never know the difference. There are two ways to install these LED tubes: Rewire your existing fluorescent-based luminaires so the CorePro LEDtubes work directly on the Mains. Or simply change the fluorescent starter to an LED starter that can be used with your Electromagnetic ballasts.

Warnings and Safety

- NOTE: The overall energy efficiency and light distribution of any installation that uses these lamps will be determined by the design of the installation.
- Installation must be done according to the installation diagrams provided with the lamp or available online. Installation must be done by a certified professional.

Product data

General information			
Cap-Base	G13 [Medium Bi-Pin Fluorescent]	Beam Angle (Nom)	240 °
EU RoHS compliant	Yes	Luminous Flux (Nom)	2000 lm
Nominal Lifetime (Nom)	30000 h	Color Designation	Cool Daylight
Switching Cycle	200000X	Correlated Color Temperature (Nom)	6500 K
Technical Type	LEDTECH-LOV	Luminous Efficacy (rated) (Nom)	111.00 lm/W
Flux measurement reference	Sphere	Color Consistency	<6
		Color Rendering Index (Nom)	80
		LLMF At End Of Nominal Lifetime (Nom)	70 %
Light technical			
Color Code	865 [CCT of 6500K]		

CorePro LEDtube EM/Mains T8

Operating and electrical

Input Frequency	50 to 60 Hz
Power (Nom)	18 W
Lamp Current (Nom)	90 mA
Starting Time (Nom)	0.5 s
Warm Up Time to 60% Light (Nom)	0.5 s
Power Factor (Nom)	0.9
Voltage (Nom)	220-240 V

Temperature

T-Ambient (Max)	45 °C
T-Ambient (Min)	-20 °C
T-Storage (Max)	65 °C
T-Storage (Min)	-40 °C
T-Case Maximum (Nom)	50 °C

Controls and dimming

Dimmable	No
----------	----

Mechanical and housing

Bulb Finish	Frosted
Bulb Material	Glass

Product Length	1200 mm
Bulb Shape	Tube, double-ended

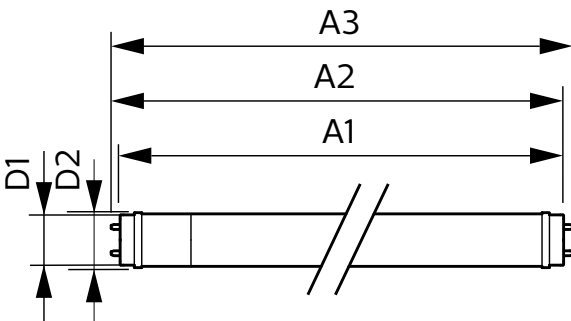
Approval and application

Energy Efficiency Class	E
Energy Saving Product	Yes
Approval Marks	RoHS compliance CE marking KEMA Keur certificate
Energy Consumption kWh/1000 h	18 kWh
EPREL Registration Number	491842

Product data

Full product code	871869680611100
Order product name	CorePro LEDtube 1200mm HO 18W 865 T8
EAN/UPC - Product	8718696806111
Order code	929001874802
Numerator - Quantity Per Pack	1
Numerator - Packs per outer box	10
Material Nr. (12NC)	929001874802
Net Weight (Piece)	0.220 kg

Dimensional drawing

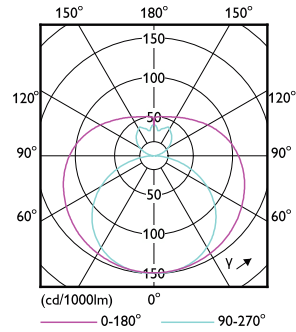
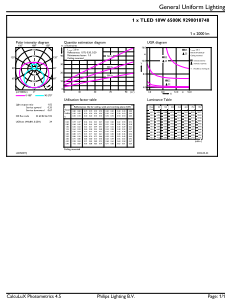


CorePro LEDtube 1200mm HO 18W 865 T8

Product	D1	D2	A1	A2	A3
CorePro LEDtube 1200mm HO 18W 865 T8	25.7 mm	28 mm	1198 mm	1205 mm	1212 mm

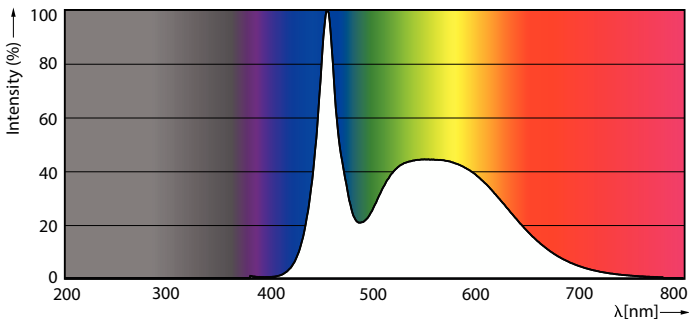
CorePro LEDtube EM/Mains T8

Photometric data



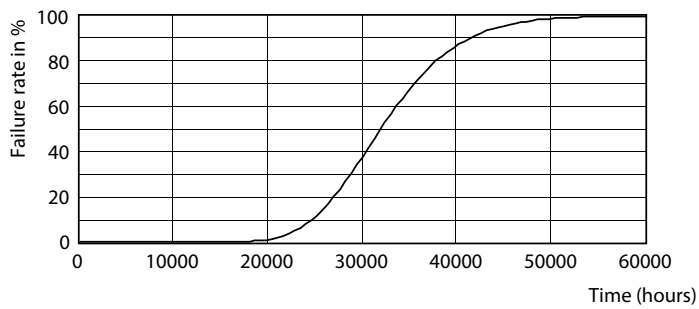
General uniform lighting

Light Distribution Diagram

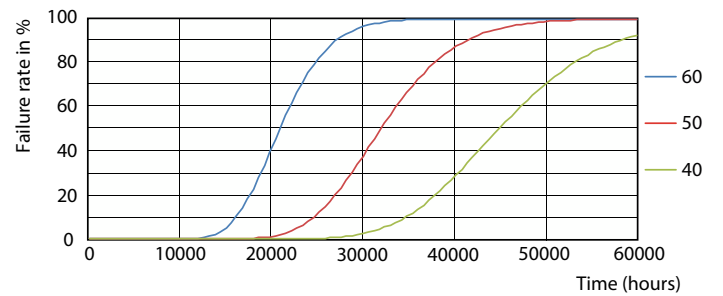


Spectral Power Distribution Colour

Lifetime



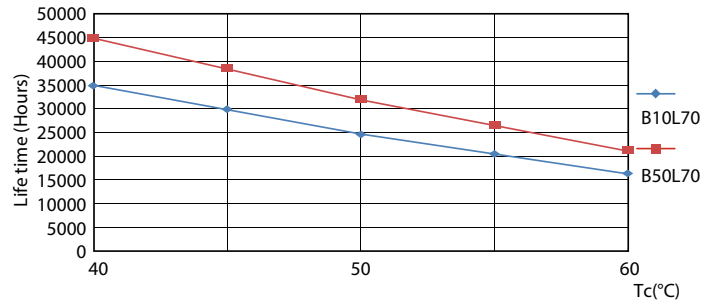
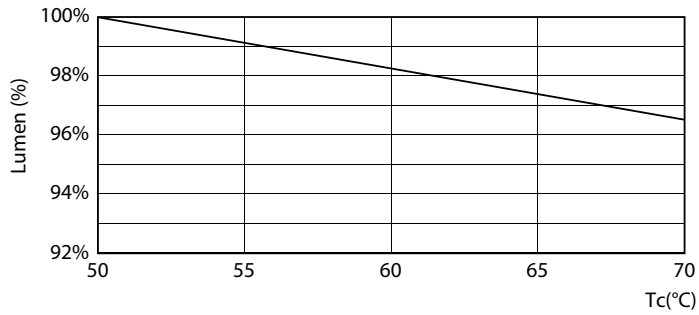
Life Expectancy Diagram



FailureRate

CorePro LEDtube EM/Mains T8

Lifetime



LumenVsTc

LEDtube_30K_4060_LifetimeVsTc-LED



Lumen Maintenance Diagram

