

CorePro LED tube Universal T8

CorePro LEDtube UN 1200mm HO 18W865 T8

The new Philips CorePro LEDtube Universal T8 brings simplicity to your lighting project. You don't need to pay attention to the driver technology anymore. Thanks to a unique design, Philips CorePro LEDtube Universal T8 directly fits in luminaires operating either on Electro Magnetic ballasts or HF Electronic ballasts or mains power connection. So simple to operate and no need to carry double stock of products! Perfectly safe, reliable & easy to install Philips CorePro LEDtube Universal T8 is the ideal alternative to standard fluorescent tubes to save energy and lower investment.

Product data

General Information		LLMF At End Of Nominal Lifetime (Nom) 70 %	
Cap-Base	G13 [Medium Bi-Pin Fluorescent]		
Nominal lifetime	50,000 hour(s)		
Switching Cycle	50,000		
Lighting Technology	LED		
Flux measurement reference	Sphere		
		Operating and Electrical	
		Line Frequency	50 to 60 Hz
		Input Frequency	50 to 60 Hz
		Power Consumption	18 W
		Lamp Current (Nom)	100 mA
		Starting Time (Nom)	0.5 s
		Warm-up time to 60% light	0.5 s
		Power Factor (Fraction)	0.9
		Voltage (Nom)	220-240 V
		Temperature	
		Ambient temperature range	-20 °C to 45 °C
		T-Case Maximum (Nom)	55 °C

CorePro LED tube Universal T8

Controls and Dimming

Dimmable	No
----------	----

Mechanical and Housing

Bulb Finish	Frosted
Bulb Material	Glass
Product Length	1,200 mm
Bulb Shape	Tube, double-ended

Approval and Application

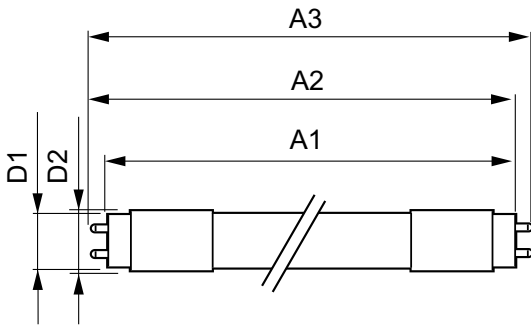
Energy Saving Product	Yes
Approval Marks	RoHS compliance TUV CE marking KEMA Keur certificate
Energy Consumption kWh/1000 h	18 kWh
EPREL Registration Number	1,315,789

CE mark	Yes
EU RoHS compliant	Yes

Product Data

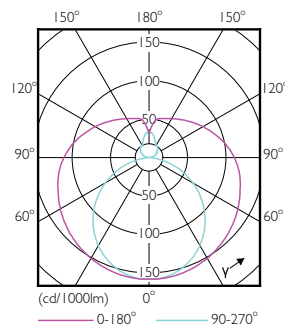
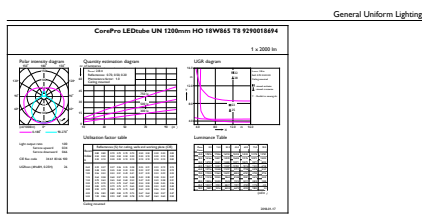
Full product code	871869680170300
Order product name	CorePro LEDtube UN 1200mm HO 18W865 T8
Order code	929001869402
Numerator - Quantity Per Pack	1
Numerator - Packs per outer box	10
Material number (12NC)	929001869402
Net weight	0.215 kg
Full product name	CorePro LEDtube UN 1200mm HO 18W865 T8
EAN/UPC - Case	8718696801710

Dimensional drawing



Product	D1	D2	A1	A2	A3
CorePro LEDtube UN 1200mm HO 18W865 T8	27.9 mm	28 mm	1,199.4 mm	1,205.3 mm	1,213.6 mm

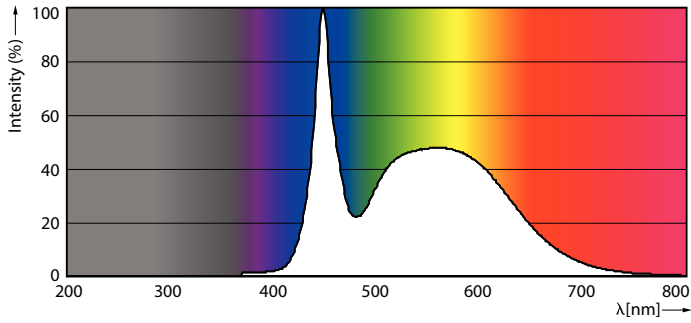
Photometric data



Light Distribution Diagram

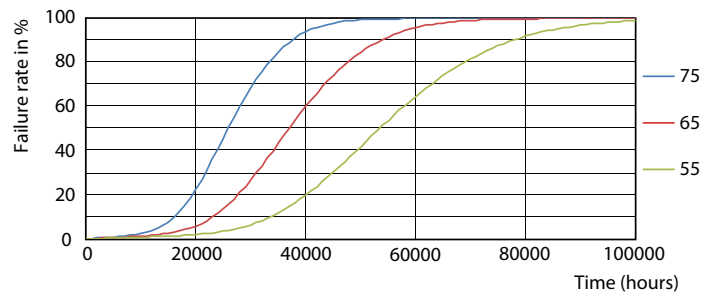
CorePro LED tube Universal T8

Photometric data



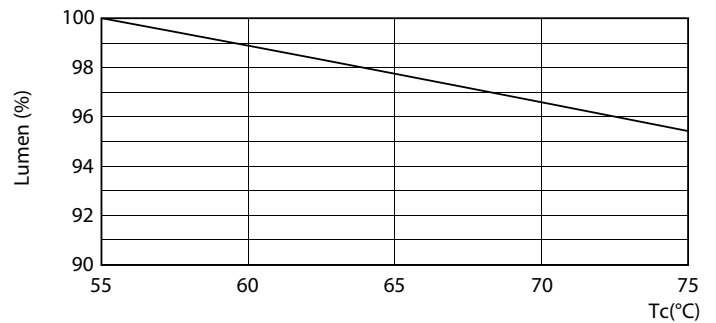
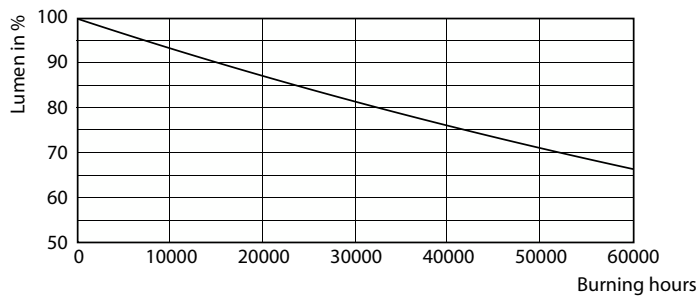
Spectral Power Distribution Colour

Lifetime



Life Expectancy Diagram - CorePro LEDtube UN 1200mm HO 18W865 T8

Life Expectancy Diagram

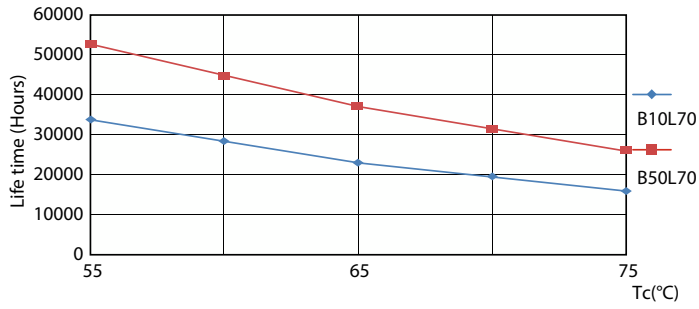


Lumen Maintenance Diagram - CorePro LEDtube UN 1200mm HO 18W865 T8

Lumen Maintenance Diagram

CorePro LED tube Universal T8

Lifetime



Life Expectancy Diagram

