



# PL-S

## 5PL-S/LED/13H/827/IF5/P/2P 20/1

Philips LED PL-S lamps make the transition to LED from CFL lamps as simple as replacing a lamp. The InstantFit (UL Type A) 2-pin PL-S LED lamps are available in a wide array of color temperatures. They quickly and effectively replace 13W 2-pin compact fluorescent PL-S lamps.

### Product data

General information	
Cap-Base	GX23 [ GX23]
EU RoHS compliant	Yes
Nominal Lifetime (Nom)	50000 h
Switching Cycle	50000X
Light technical	
Color Code	827 [ CCT of 2700K]
Beam Angle (Nom)	120 °
Luminous Flux (Nom)	520 lm
Color Designation	Warm White (WW)
Correlated Color Temperature (Nom)	2700 K
Luminous Efficacy (rated) (Nom)	104.00 lm/W
Color Consistency	<6
Color Rendering Index (Nom)	82
LLMF At End Of Nominal Lifetime (Nom)	70 %
Operating and electrical	
Input Frequency	50 to 60 Hz
Power (Nom)	5 W
Lamp Current (Max)	50 mA
Lamp Current (Min)	15 mA
Starting Time (Nom)	0.5 s

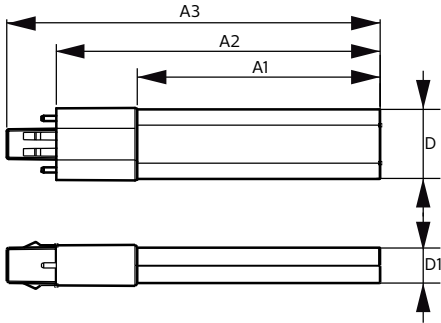
Warm Up Time to 60% Light (Nom)	0.5 s
UL Type	Type A - works on ballast
Power Factor (Nom)	0.9
Voltage (Nom)	120-277 V
Temperature	
T-Ambient (Max)	45 °C
T-Ambient (Min)	-20 °C
T-Storage (Max)	65 °C
T-Storage (Min)	-40 °C
T-Case Maximum (Nom)	75 °C
Controls and dimming	
Dimmable	No
Mechanical and housing	
Bulb Material	Plastic
Product Length	170 mm
Bulb Shape	Tube, single-ended
Approval and application	
Energy Saving Product	Yes
Approval Marks	UL certificate RoHS compliance

# PL-S

Energy Consumption kWh/1000 h	- kWh
<b>Product data</b>	
Order product name	5PL-S/LED/13H/827/IF5/P/2P 20/1
EAN/UPC - Product	046677529512
Order code	929001862804

Numerator - Quantity Per Pack	1
Numerator - Packs per outer box	20
Material Nr. (12NC)	929001862804
Net Weight (Piece)	0.043 kg

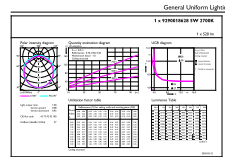
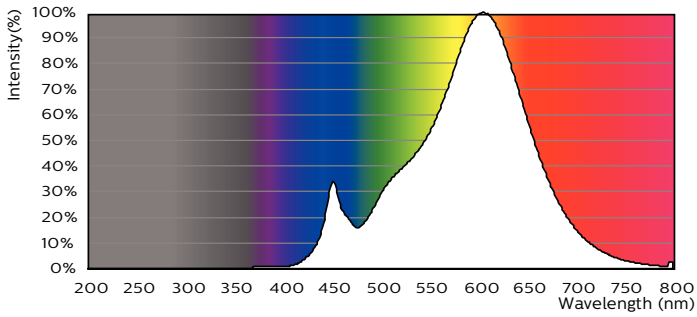
## Dimensional drawing



5PL-S/LED/13H/827/IF5/P/2P 20/1

Product	D	D1	A1	A2	A3
5PL-S/LED/13H/827/IF5/P/2P 20/1	31.1 mm	15.8 mm	108 mm	144 mm	166 mm

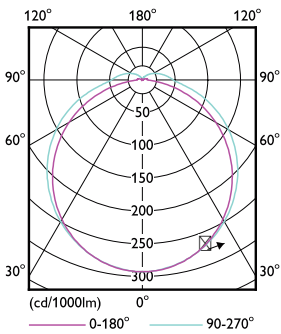
## Photometric data



DocuLight Professional V1 - Lighting V1 - Page 1/1

LEDtube PLS 5W GX23 827 2P 12D ND

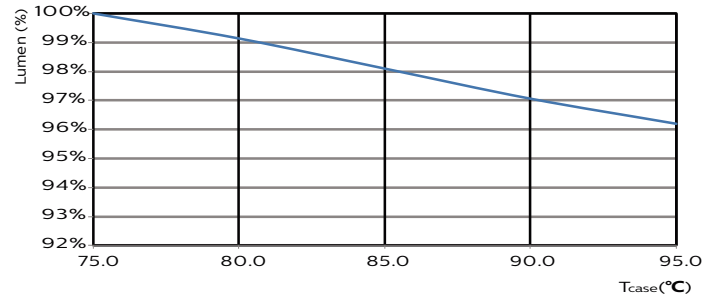
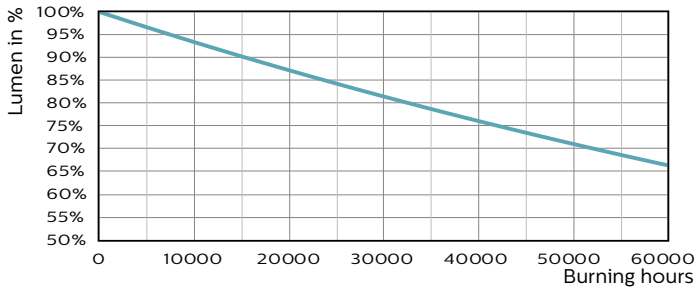
LEDtube PLS 5W GX23 827 2P 12D ND



LEDtube PLS 5W GX23 827 2P 12D ND

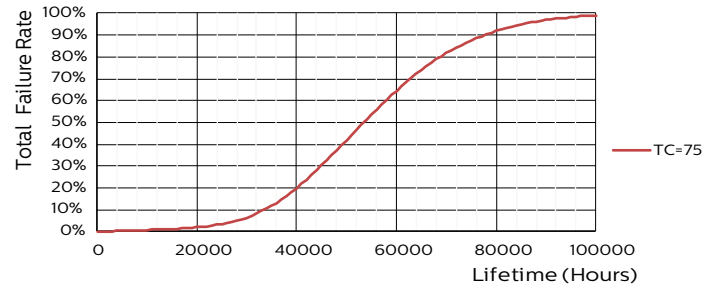
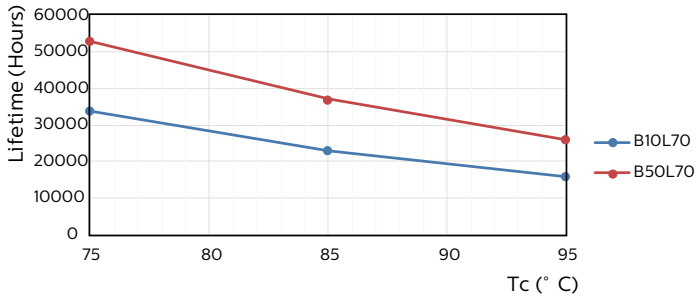
# PL-S

## Lifetime



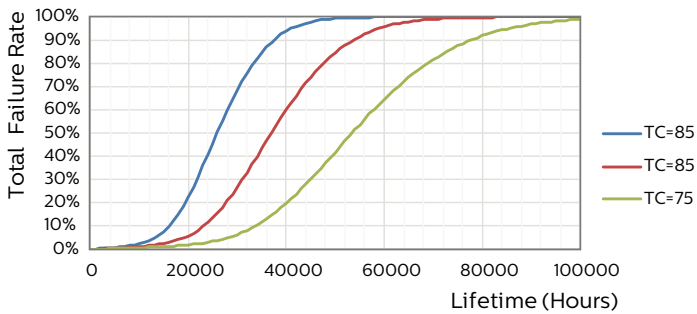
LEDtube PLS 5W GX23 827 2P 12D ND

LEDtube PLS 5W GX23 827 2P 12D ND



LEDtube PLS 5W GX23 827 2P 12D ND

LEDtube PLS 5W GX23 827 2P 12D ND



LEDtube PLS 5W GX23 827 2P 12D ND

