



T5

11T5HE/34-840/IF15/G/DIM 10/1

Philips T5 LED tubes offer an affordable, energy saving retrofit solution. The T5 lamps have been engineered to withstand the test of time with a 50,000-hour lifetime and a limited 5-year warranty to back it up. The lighting performance effectively replaces conventional fluorescent T5 HO or T5 HE lamps. Available in either InstantFit (Type A or Type C) or MainsFit (Type B / Ballast bypass), Philips T5 TLEDs provide a variety of options for any application.

Product data

General information		Lamp Current (Min)	
Cap-Base	G5 [G5]		60 mA
EU RoHS compliant	Yes	Starting Time (Nom)	0.5 s
Nominal Lifetime (Nom)	50000 h	Warm Up Time to 60% Light (Nom)	0.5 s
Switching Cycle	50000X	UL Type	Type A - works on ballast
		Power Factor (Nom)	0.9
		Voltage (Nom)	50-80 V
Light technical		Temperature	
Color Code	840 [CCT of 4000K]	T-Ambient (Max)	45 °C
Beam Angle (Nom)	200 °	T-Ambient (Min)	-20 °C
Luminous Flux (Nom)	1500 lm	T-Storage (Max)	65 °C
Color Designation	Cool White (CW)	T-Storage (Min)	-40 °C
Correlated Color Temperature (Nom)	4000 K	T-Case Maximum (Nom)	70 °C
Luminous Efficacy (rated) (Nom)	136.00 lm/W		
Color Consistency	<6	Controls and dimming	
Color Rendering Index (Nom)	82	Dimmable	Yes
LLMF At End Of Nominal Lifetime (Nom)	70 %		
Operating and electrical		Mechanical and housing	
Input Frequency	40000-110000 Hz	Bulb Material	Glass
Power (Nom)	11 W	Product Length	900 mm
Lamp Current (Max)	400 mA		

T5

Bulb Shape	Tube, double-ended
------------	--------------------

Approval and application

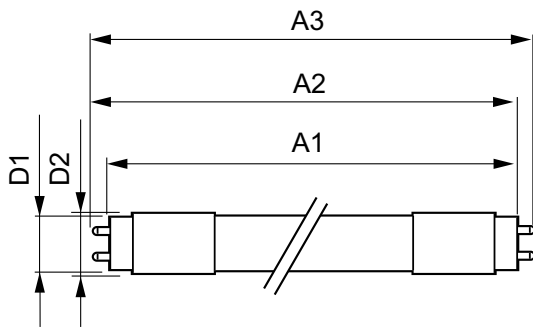
Energy Saving Product	Yes
Approval Marks	UL certificate RoHS compliance
Energy Consumption kWh/1000 h	- kWh

Product data

Order product name	11T5HE/34-840/IF15/G/DIM 10/1
--------------------	-------------------------------

EAN/UPC - Product	046677476472
Order code	929001823704
Numerator - Quantity Per Pack	1
Numerator - Packs per outer box	10
Material Nr. (12NC)	929001823704
Net Weight (Piece)	0.110 kg

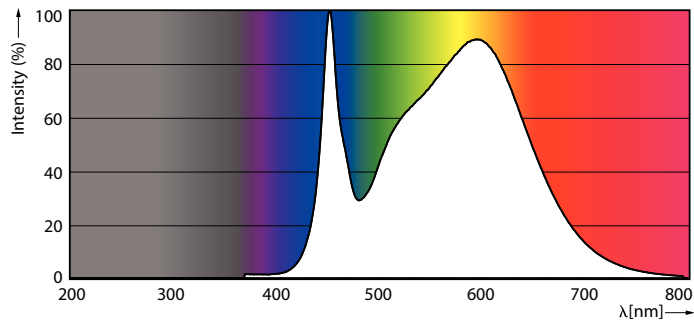
Dimensional drawing



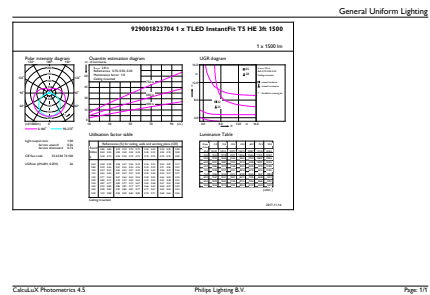
11T5HE/34-840/IF15/G/DIM 10/1

Product	D1	D2	A1	A2	A3
11T5HE/34-840/IF15/G/DIM 10/1	15.3 mm	18.4 mm	847.8 mm	854.9 mm	862 mm

Photometric data

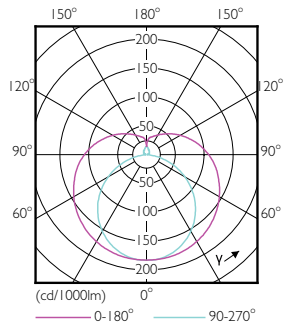


LEDtube PLC 400mm 16-5W 2G11 840 2100lm



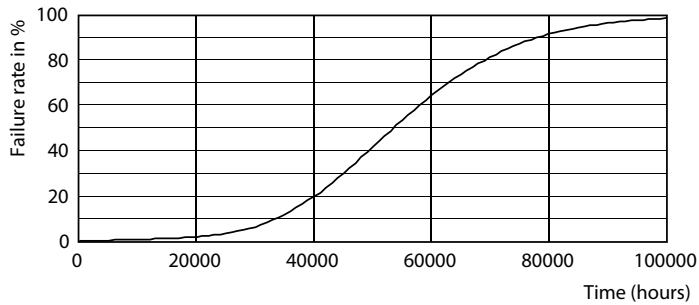
LEDtube 11W G5 840 200D DIM IF15

Photometric data

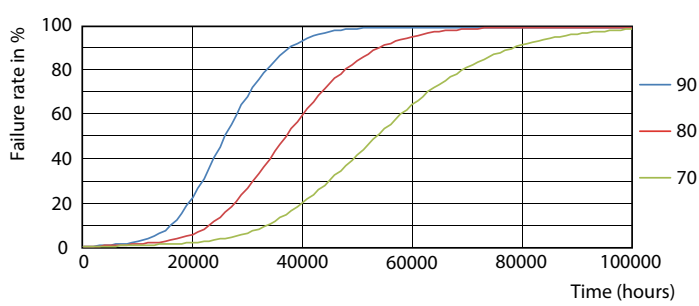


LEDtube 8W G5 830 200D DIM IF10

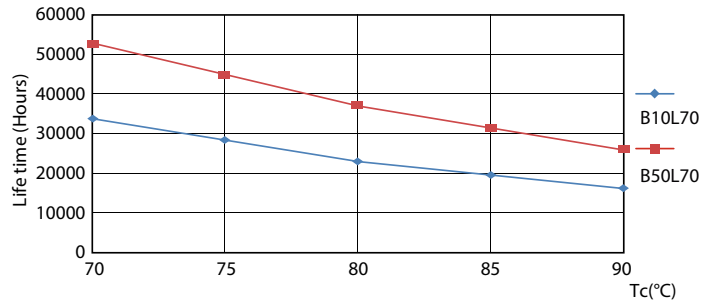
Lifetime



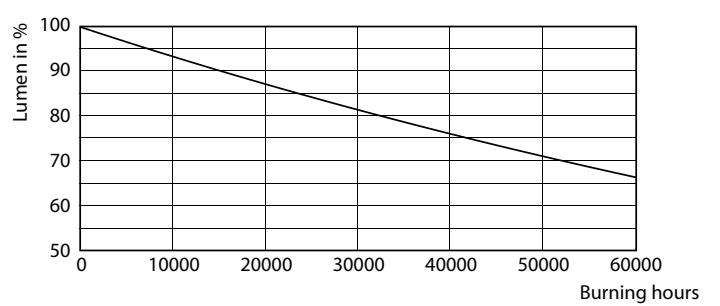
LEDtube 8-14W G5 830-850 200D DIM IF10-21



LEDtube 8-14W G5 830-850 200D DIM IF10-21



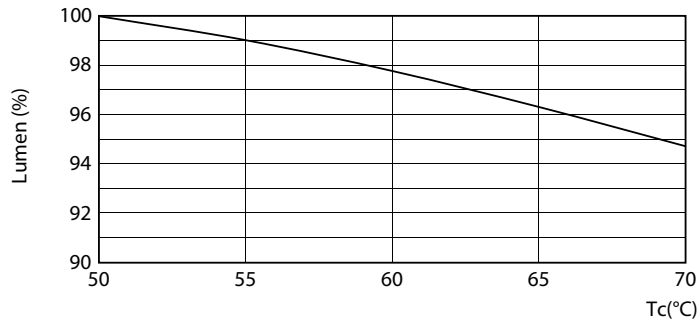
LEDtube 8-14W G5 830-850 200D DIM IF10-21



LEDtube 8-14W G5 830-850 200D DIM IF10-21

T5

Lifetime



LEDtube 8-14W G5 830-850 200D DIM IF10-21

