



# MASTER LEDtube InstantFit HF T8



## MASTER LEDtube HF 600mm HO 8W865 T8

Philips MASTER LEDtube InstantFit T8 integrates a LED light source into a traditional fluorescent form factor. Its unique design creates a perfectly uniform visual appearance which cannot be distinguished from traditional fluorescent. Philips MASTER LEDtube InstantFit T8 is the ideal solution for customers who have higher light requirements and want to maximize value over lifetime.; Full energy savings & longer lifetime result in attractive payback times and TCO benefits.

### Warnings and Safety

- NOTES: The overall energy efficiency and light distribution of any installation that uses these lamps are determined by the design of the installation.

### Product data

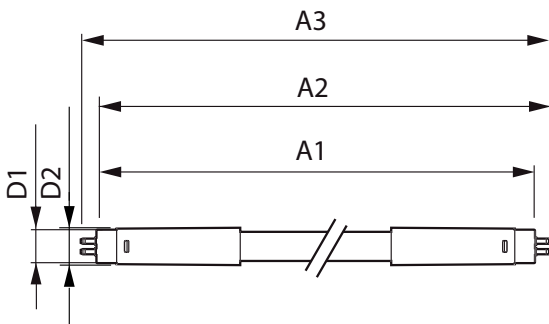
General information		Color Consistency	
Cap-Base	G13 ROT (Rotating) [ Medium Bi-Pin Fluorescent]	Color Consistency	<6
EU RoHS compliant	Yes	Color Rendering Index (Nom)	83
Nominal Lifetime (Nom)	60000 h	LLMF At End Of Nominal Lifetime (Nom)	70 %
Switching Cycle	50000X	Operating and electrical	
Flux measurement reference	Sphere	Input Frequency	20000-80000 Hz
Light technical		Power (Nom)	8 W
Color Code	865 [ CCT of 6500K]	Lamp Current (Max)	500 mA
Beam Angle (Nom)	160 °	Lamp Current (Min)	150 mA
Luminous Flux (Nom)	1050 lm	Starting Time (Nom)	0.5 s
Color Designation	Cool Daylight	Warm Up Time to 60% Light (Nom)	0.5 s
Correlated Color Temperature (Nom)	6500 K	Power Factor (Nom)	0.9
Luminous Efficacy (rated) (Nom)	131.00 lm/W	Voltage (Nom)	20-50 V

# MASTER LEDtube InstantFit HF T8

Temperature	
T-Ambient (Max)	45 °C
T-Ambient (Min)	-20 °C
T-Storage (Max)	65 °C
T-Storage (Min)	-40 °C
T-Case Maximum (Nom)	60 °C
Controls and dimming	
Dimmable	No
Mechanical and housing	
Bulb Material	Plastic
Product Length	600 mm
Bulb Shape	Tube, double-ended
Approval and application	
Energy Efficiency Class	E

Energy Saving Product	Yes
Approval Marks	RoHS compliance TUV CE marking KEMA Keur certificate
Energy Consumption kWh/1000 h	8 kWh
EPREL Registration Number	387396
Product data	
Full product code	871869674367600
Order product name	MASTER LEDtube HF 600mm HO 8W865 T8
EAN/UPC - Product	8718696743676
Order code	929001393302
Numerator - Quantity Per Pack	1
Numerator - Packs per outer box	10
Material Nr. (12NC)	929001393302
Net Weight (Piece)	0.160 kg

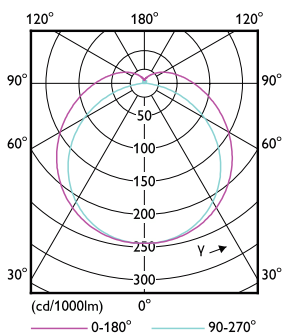
## Dimensional drawing



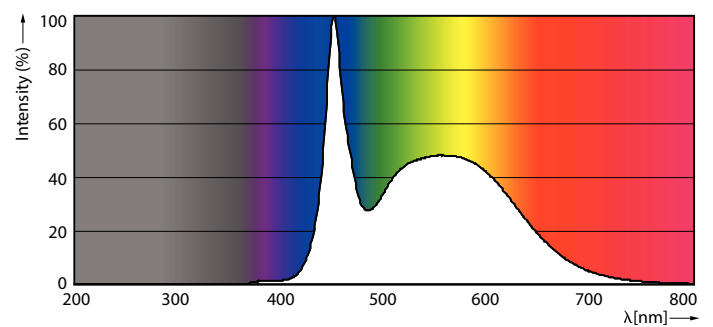
MASTER LEDtube HF 600mm HO 8W865 T8

Product	D1	D2	A1	A2	A3
MASTER LEDtube HF 600mm HO 8W865 T8	25.8 mm	28 mm	588.6 mm	595.7 mm	602.8 mm

## Photometric data



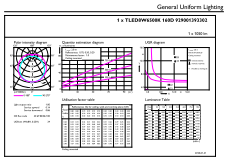
Light Distribution Diagram



Spectral Power Distribution Colour

# MASTER LEDtube InstantFit HF T8

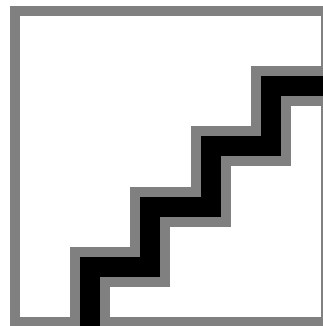
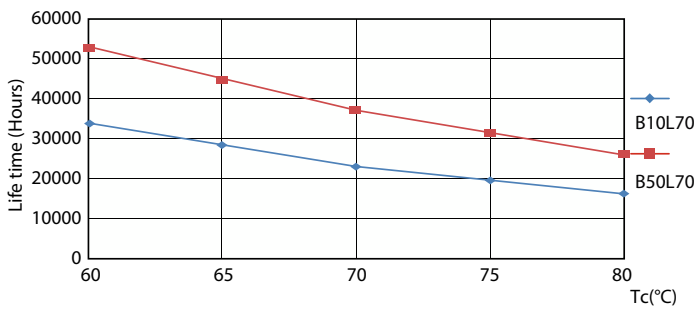
## Photometric data



General uniform lighting

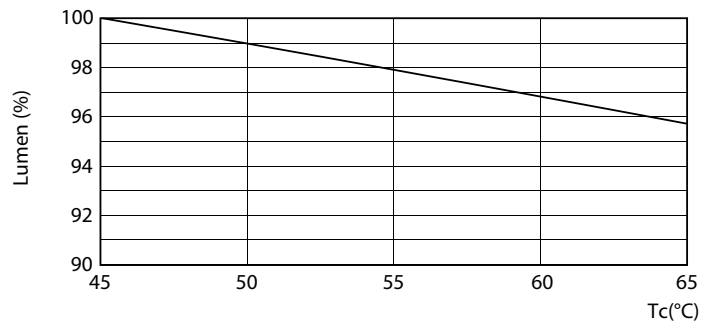
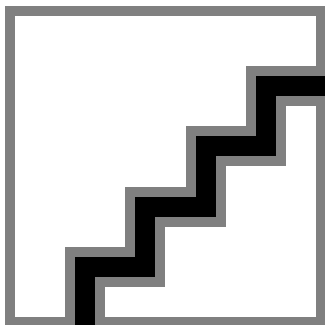
### General uniform lighting

## Lifetime



### LifetimeVsTc

### FailureRate

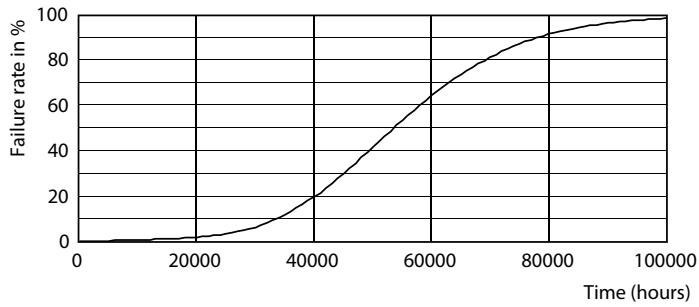


### Lumen Maintenance Diagram

### LumenVsTc

# MASTER LEDtube InstantFit HF T8

## Lifetime



### Life Expectancy Diagram

