



# MASTER LEDtube InstantFit HF T5



## Master LEDtube HF 600mm HE 8W 840 T5

The Philips MASTER LEDtube integrates a LED light source into a traditional fluorescent form factor. Its unique design creates a perfectly uniform visual appearance, which cannot be distinguished from traditional fluorescent. These T5 lighting tubes are the right choice for absolute performance and are designed to stand up to everyday conditions. Unparalleled savings thanks to low energy consumption and an exceptionally long lifetime make these T5 LED tubes the choice for every demanding application.

### Product data

General information		Operating and electrical	
Cap-Base	G5 [ G5]	Input Frequency	30K to 100K Hz
EU RoHS compliant	Yes	Power (Nom)	8 W
Nominal Lifetime (Nom)	60000 h	Lamp Current (Max)	350 mA
Switching Cycle	50000X	Lamp Current (Min)	150 mA
Flux measurement reference	Sphere	Starting Time (Nom)	0.5 s
		Warm Up Time to 60% Light (Nom)	0.5 s
		Power Factor (Nom)	0.92
		Voltage (Nom)	40-70 V
Light technical		Temperature	
Color Code	840 [ CCT of 4000K]	T-Ambient (Max)	45 °C
Beam Angle (Nom)	200 °	T-Ambient (Min)	-20 °C
Luminous Flux (Nom)	1050 lm	T-Storage (Max)	65 °C
Color Designation	Cool White (CW)	T-Storage (Min)	-40 °C
Correlated Color Temperature (Nom)	4000 K	T-Case Maximum (Nom)	65 °C
Luminous Efficacy (rated) (Nom)	131.00 lm/W		
Color Consistency	<6		
Color Rendering Index (Nom)	80		
LLMF At End Of Nominal Lifetime (Nom)	70 %		

# MASTER LEDtube InstantFit HF T5

## Controls and dimming

Dimmable	Yes - Check ballast compatibility
----------	-----------------------------------

## Mechanical and housing

Bulb Finish	Frosted
Bulb Material	Glass
Product Length	600 mm
Bulb Shape	Tube, double-ended

## Approval and application

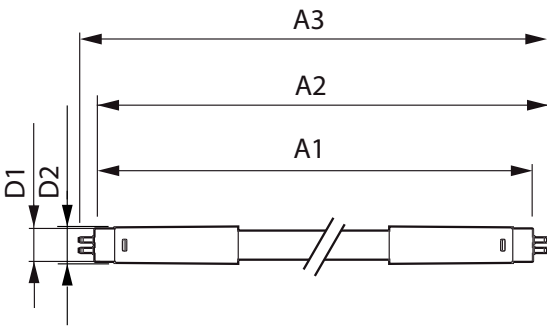
Energy Efficiency Class	E
Energy Saving Product	Yes
Approval Marks	RoHS compliance TUV CE marking KEMA Keur certificate

Energy Consumption kWh/1000 h	8 kWh
EPREL Registration Number	406184

## Product data

Full product code	871869674325600
Order product name	Master LEDtube HF 600mm HE 8W 840 T5
EAN/UPC - Product	8718696743256
Order code	929001390802
Numerator - Quantity Per Pack	1
Numerator - Packs per outer box	10
Material Nr. (12NC)	929001390802
Net Weight (Piece)	0.080 kg

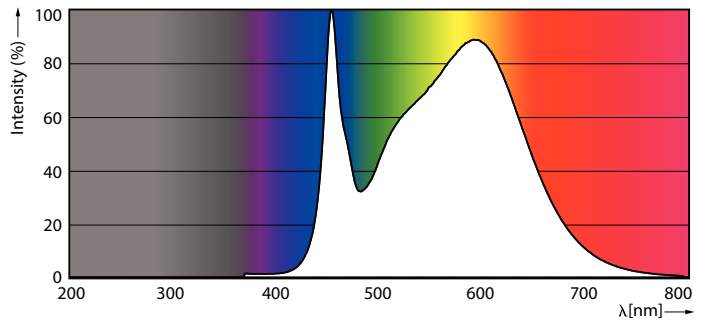
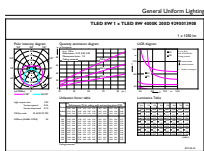
## Dimensional drawing



Master LEDtube HF 600mm HE 8W 840 T5

Product	D1	D2	A1	A2	A3
Master LEDtube HF 600mm HE 8W 840 T5	15.5 mm	18.8 mm	549 mm	556.1 mm	563.2 mm

## Photometric data

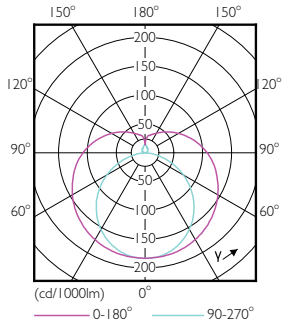


LEDtube 600mm 8W G5 840 1050lm

LEDtube 600mm 8W G5 840 1050lm

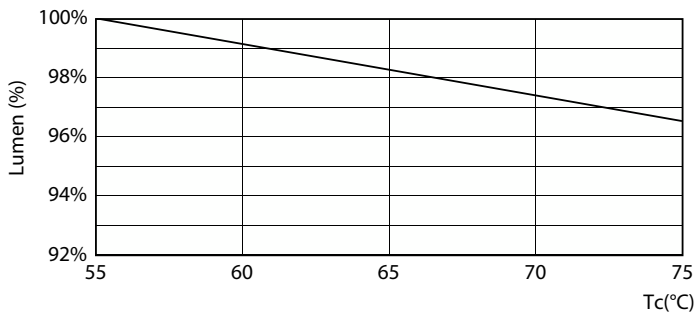
# MASTER LEDtube InstantFit HF T5

## Photometric data

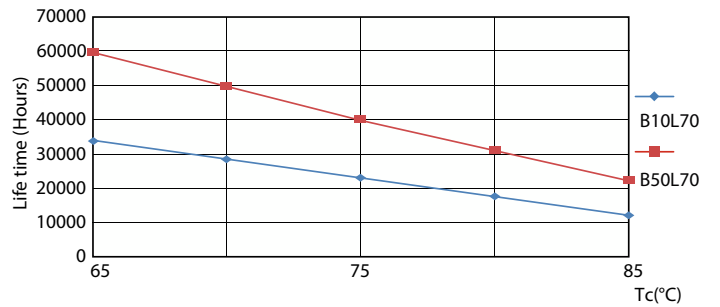


LEDtube 600mm 8W G5 830 1000lm

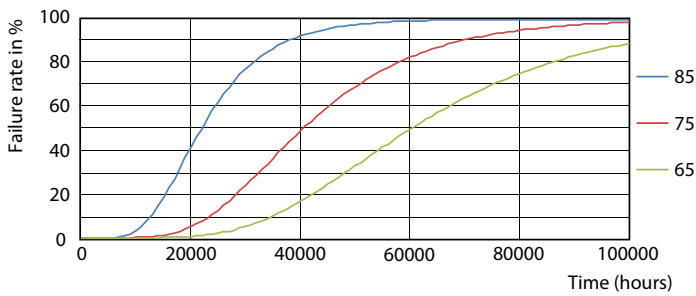
## Lifetime



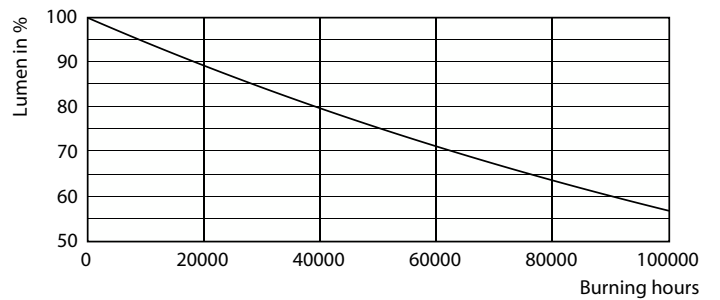
LumenVsTc



LifetimeVsTc



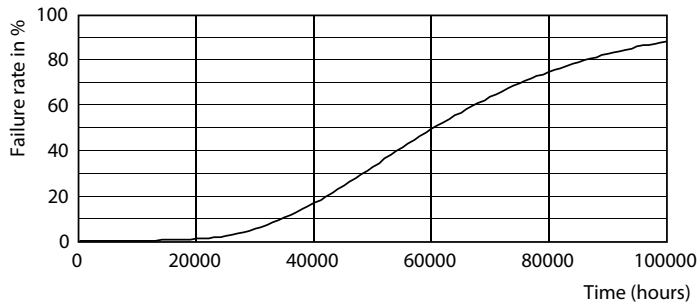
FailureRate



Lumen Maintenance Diagram

# MASTER LEDtube InstantFit HF T5

## Lifetime



### Life Expectancy Diagram

