

MASTER LEDtube EM/ Mains T8

MASTER LEDtube STD 1200mm 14W840 T8 I W

The Philips MASTER LEDtube integrates a LED light source into a traditional fluorescent form factor. Its unique design creates a perfectly uniform visual appearance which cannot be distinguished from traditional fluorescent. For those that are looking for value for money within limited budget and re-lamping efforts for better light effect and lifetime.

Warnings and Safety

- NOTE: The overall energy efficiency and light distribution of any installation that uses these lamps will be determined by the design of the installation.

Product data

| General information | | LLMF At End Of Nominal Lifetime (Nom) 70 % | |
|------------------------------------|----------------------------------|--|-------------|
| Cap-Base | G13 [Medium Bi-Pin Fluorescent] | | |
| EU RoHS compliant | Yes | | |
| Nominal Lifetime (Nom) | 50000 h | | |
| Switching Cycle | 200000X | | |
| Light technical | | Operating and electrical | |
| Color Code | 840 [CCT of 4000K] | Input Frequency | 50 to 60 Hz |
| Beam Angle (Nom) | 160 ° | Power (Nom) | 14 W |
| Luminous Flux (Nom) | 2100 lm | Lamp Current (Max) | 170 mA |
| Luminous Flux (Rated) (Nom) | 2100 lm | Lamp Current (Min) | 50 mA |
| Color Designation | Cool White (CW) | Starting Time (Nom) | 0.5 s |
| Correlated Color Temperature (Nom) | 4000 K | Warm Up Time to 60% Light (Nom) | 0.5 s |
| Luminous Efficacy (rated) (Nom) | 150.00 lm/W | Power Factor (Nom) | 0.92 |
| Color Consistency | <6 | Voltage (Nom) | 100-277 V |
| Color Rendering Index (Nom) | 80 | | |
| | | Temperature | |
| | | T-Ambient (Max) | 45 °C |
| | | T-Ambient (Min) | -20 °C |
| | | T-Storage (Max) | 65 °C |

MASTER LEDtube EM/Mains T8

| | |
|----------------------|--------|
| T-Storage (Min) | -40 °C |
| T-Case Maximum (Nom) | 55 °C |

Controls and dimming

| | |
|----------|----|
| Dimmable | No |
|----------|----|

Mechanical and housing

| | |
|----------------|--------------------|
| Bulb Finish | Frosted |
| Product Length | 1200 mm |
| Bulb Shape | Tube, double-ended |

Approval and application

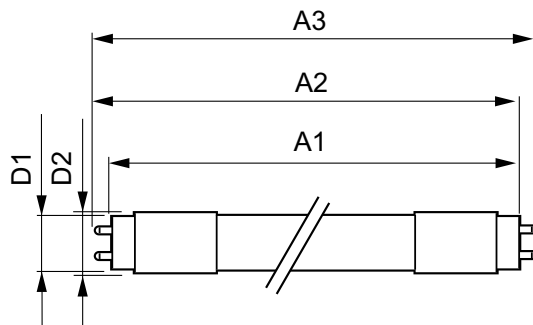
| | |
|-----------------------|--|
| Energy Saving Product | Yes |
| Approval Marks | RoHS compliance CE marking KEMA Keur certificate |

| | |
|-------------------------------|--------|
| Energy Consumption kWh/1000 h | 14 kWh |
|-------------------------------|--------|

Product data

| | |
|---------------------------------|---|
| Order product name | MASTER LEDtube STD 1200mm 14W840 T8 I W |
| EAN/UPC - Product | 046677554224 |
| Order code | 929001375442 |
| Numerator - Quantity Per Pack | 1 |
| Numerator - Packs per outer box | 25 |
| Material Nr. (12NC) | 929001375442 |
| Net Weight (Piece) | 0.100 kg |

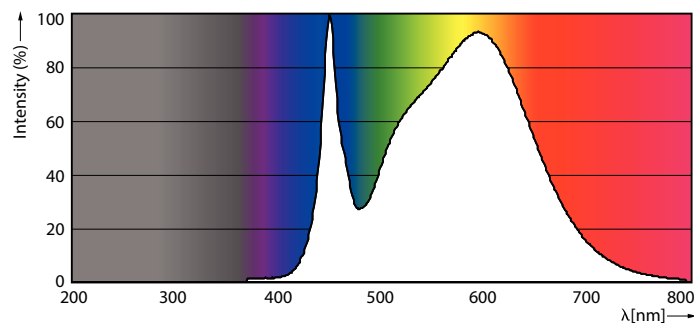
Dimensional drawing



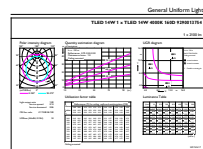
MASTER LEDtube STD 1200mm 14W840 T8 I W

| Product | D1 | D2 | A1 | A2 | A3 |
|---|---------|-------|-----------|-----------|-----------|
| MASTER LEDtube STD 1200mm 14W840 T8 I W | 25.7 mm | 28 mm | 1198.2 mm | 1205.3 mm | 1212.4 mm |

Photometric data



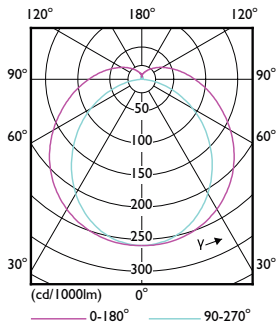
LEDtube PLC/T 12W G24Q 840 32V DIM



MAS LEDtube STD 14W G13 840 ND

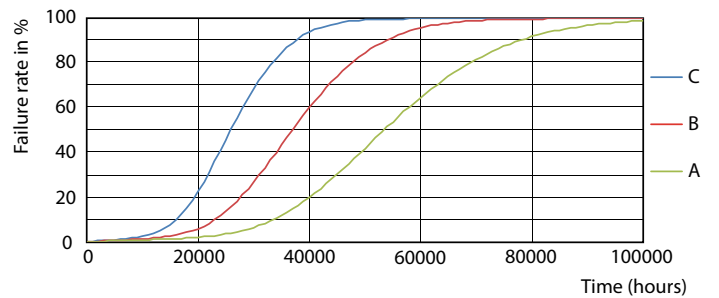
MASTER LEDtube EM/Mains T8

Photometric data

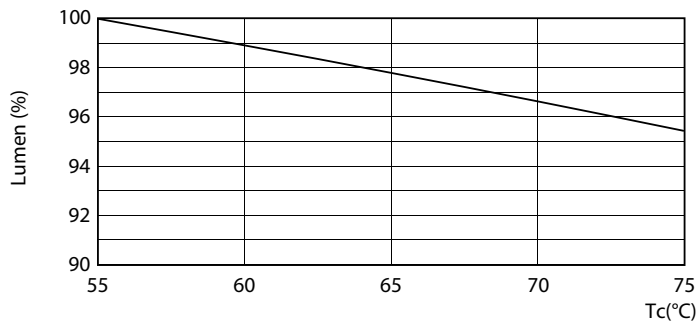


LEDtube 14W G13 LDD

Lifetime

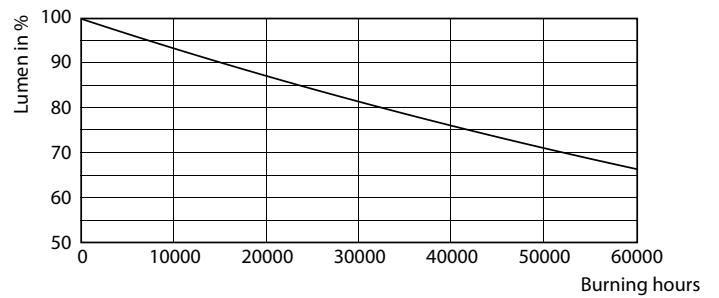


Life Expectancy Diagram



LEDtube 14W 50K LumenVsTc

LEDtube 50K FailureRate-LED



Lumen Maintenance Diagram

MASTER LEDtube EM/Mains T8

Lifetime



LEDtube 50K LifetimeVsTc-LED

