



MASTER LEDtube InstantFit HF T8



MASTER LEDtube HF 1200mm UO 16W865 T8

Philips MASTER LEDtube InstantFit T8 integrates a LED light source into a traditional fluorescent form factor. Its unique design creates a perfectly uniform visual appearance which cannot be distinguished from traditional fluorescent. Philips MASTER LEDtube InstantFit T8 is the ideal solution for customers who have higher light requirements and want to maximize value over lifetime.; Full energy savings & longer lifetime result in attractive payback times and TCO benefits.

Warnings and Safety

- NOTES: The overall energy efficiency and light distribution of any installation that uses these lamps are determined by the design of the installation.

Product data

General information	
Cap-Base	G13 ROT (Rotating) [Medium Bi-Pin Fluorescent]
EU RoHS compliant	Yes
Nominal Lifetime (Nom)	60000 h
Switching Cycle	50000X
Flux measurement reference	Sphere
Light technical	
Color Code	865 [CCT of 6500K]
Beam Angle (Nom)	160 °
Luminous Flux (Nom)	2500 lm
Color Designation	Cool Daylight
Correlated Color Temperature (Nom)	6500 K
Luminous Efficacy (rated) (Nom)	156.00 lm/W

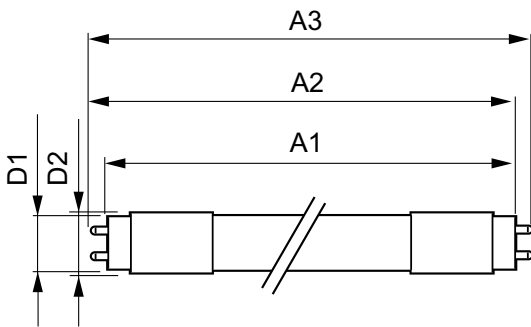
Color Consistency	<6
Color Rendering Index (Nom)	83
LLMF At End Of Nominal Lifetime (Nom)	70 %
Operating and electrical	
Input Frequency	20000-75000 Hz
Power (Nom)	16 W
Lamp Current (Max)	700 mA
Lamp Current (Min)	300 mA
Starting Time (Nom)	0.5 s
Warm Up Time to 60% Light (Nom)	0.5 s
Power Factor (Nom)	0.9
Voltage (Nom)	30-80 V

MASTER LEDtube InstantFit HF T8

Temperature	
T-Ambient (Max)	45 °C
T-Ambient (Min)	-20 °C
T-Storage (Max)	65 °C
T-Storage (Min)	-40 °C
T-Case Maximum (Nom)	55 °C
Controls and dimming	
Dimmable	No
Mechanical and housing	
Bulb Material	Plastic
Product Length	1200 mm
Bulb Shape	Tube, double-ended
Approval and application	
Energy Efficiency Class	D

Energy Saving Product	Yes
Approval Marks	RoHS compliance TUV CE marking KEMA Keur certificate
Energy Consumption kWh/1000 h	16 kWh
EPREL Registration Number	387374
Product data	
Full product code	871869668798700
Order product name	MASTER LEDtube HF 1200mm UO 16W865 T8
EAN/UPC - Product	8718696687987
Order code	929001300102
Numerator - Quantity Per Pack	1
Numerator - Packs per outer box	10
Material Nr. (12NC)	929001300102
Net Weight (Piece)	0.360 kg

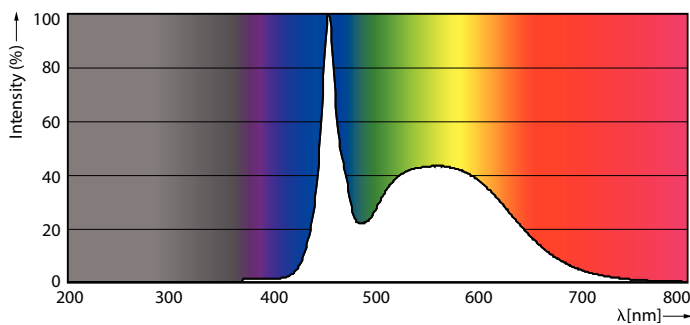
Dimensional drawing



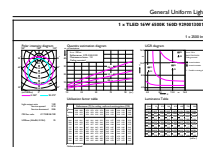
MASTER LEDtube HF 1200mm UO 16W865 T8

Product	D1	D2	A1	A2	A3
MASTER LEDtube HF 1200mm UO 16W865 T8	25.6 mm	28 mm	1198.1 mm	1205.2 mm	1212.3 mm

Photometric data



MAS LEDtube HF 1200mm UO 16W865 T8



MAS LEDtube HF 1200mm UO 16W865 T8

MASTER LEDtube InstantFit HF T8

Photometric data

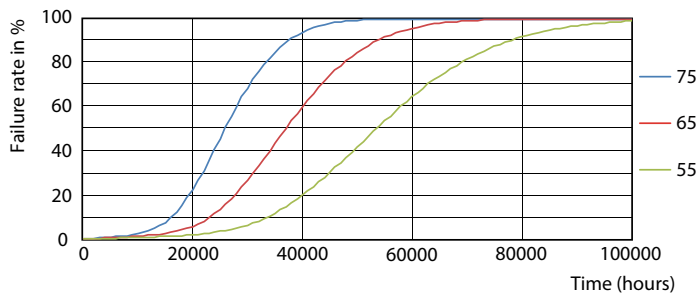


LEDtube HF 1200mm 1500mm UO T8

Lifetime



LEDtube HF 1500mm 26W G5 T5



LEDtube HF 1200mm 1500mm UO T8



LEDtube HF HO-UO 14-24W G13 830-865 T8

LEDtube HF 1200mm HO-UO 14-16W G13 830-865 T8

MASTER LEDtube InstantFit HF T8

Lifetime



LEDtube HF HO-UO 14-24W G13 830-865 T8

